

Fig.1 IR of 12a

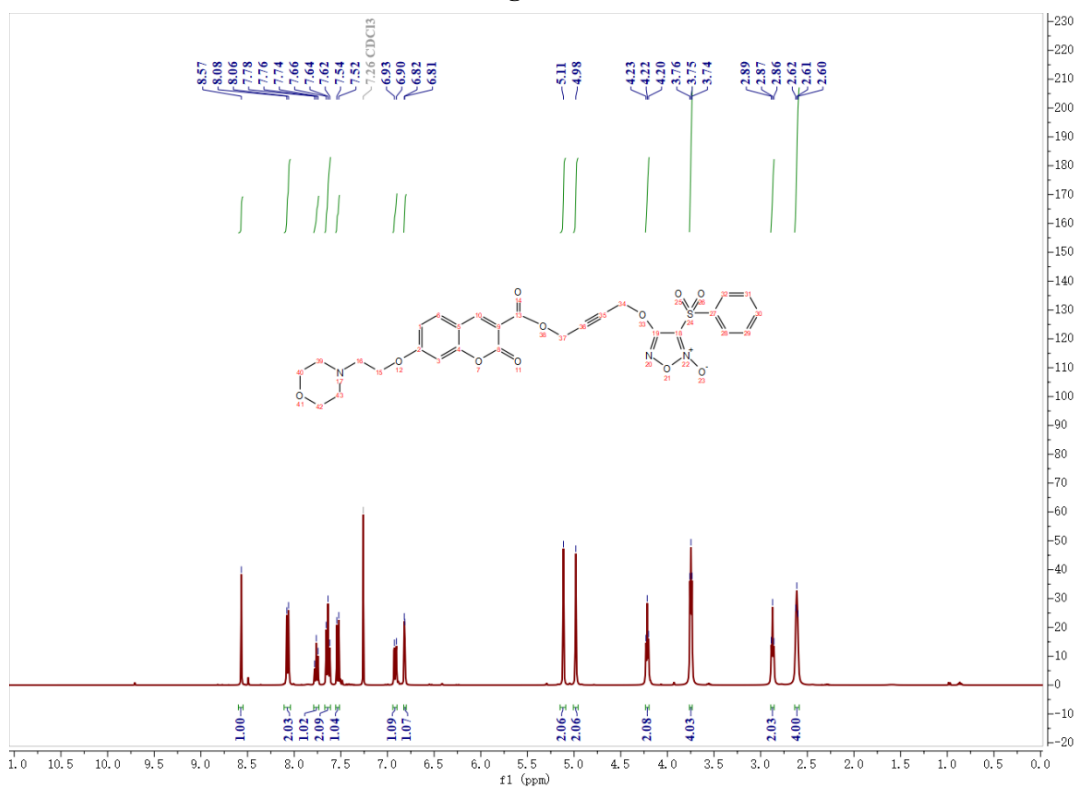


Fig.2 ¹H NMR of 12a

HP6 #8 RT: 0.11 AV: 1 NL: 9.11E4
T: FTMS + c ESI Full ms [100.00-1000.00]

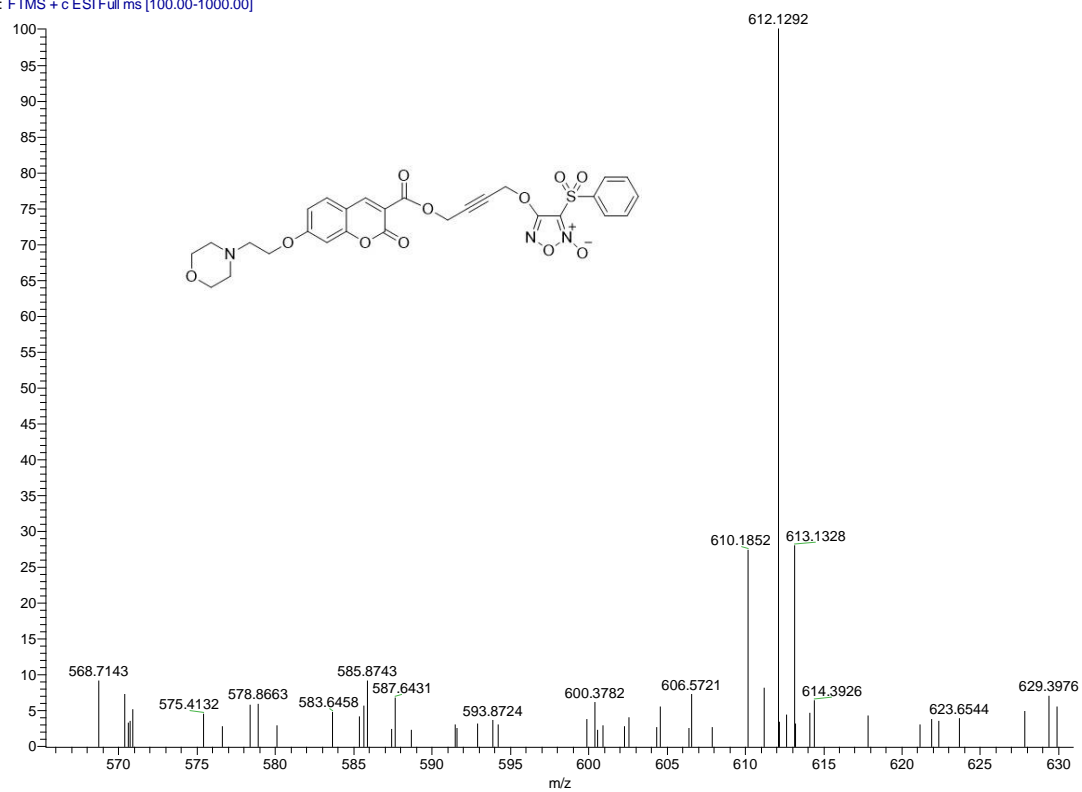


Fig.3 HRMS of 12a

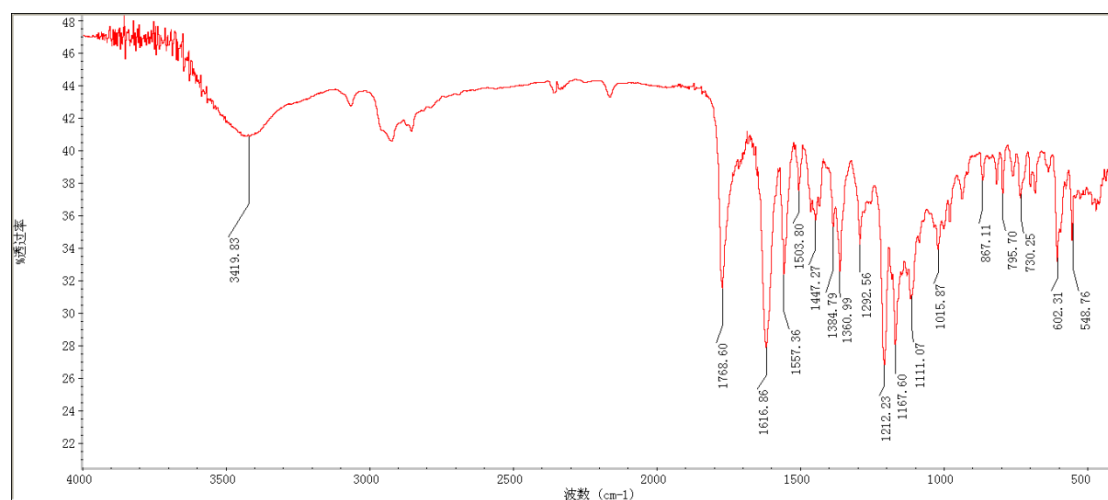


Fig.4 IR of 12b

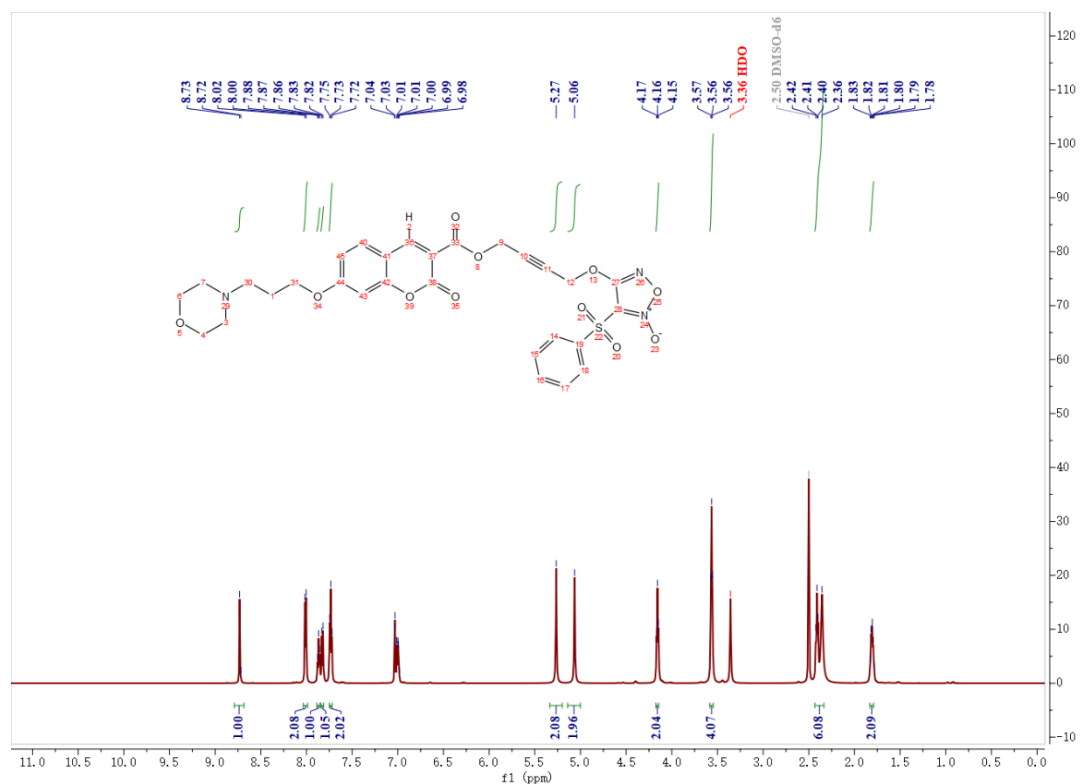


Fig.5 ¹H NMR of 12b

HP2 #25 RT: 0.20 AV: 1 NL: 1.24E7
T: FTMS + c ESI Full ms [300.00-700.00]

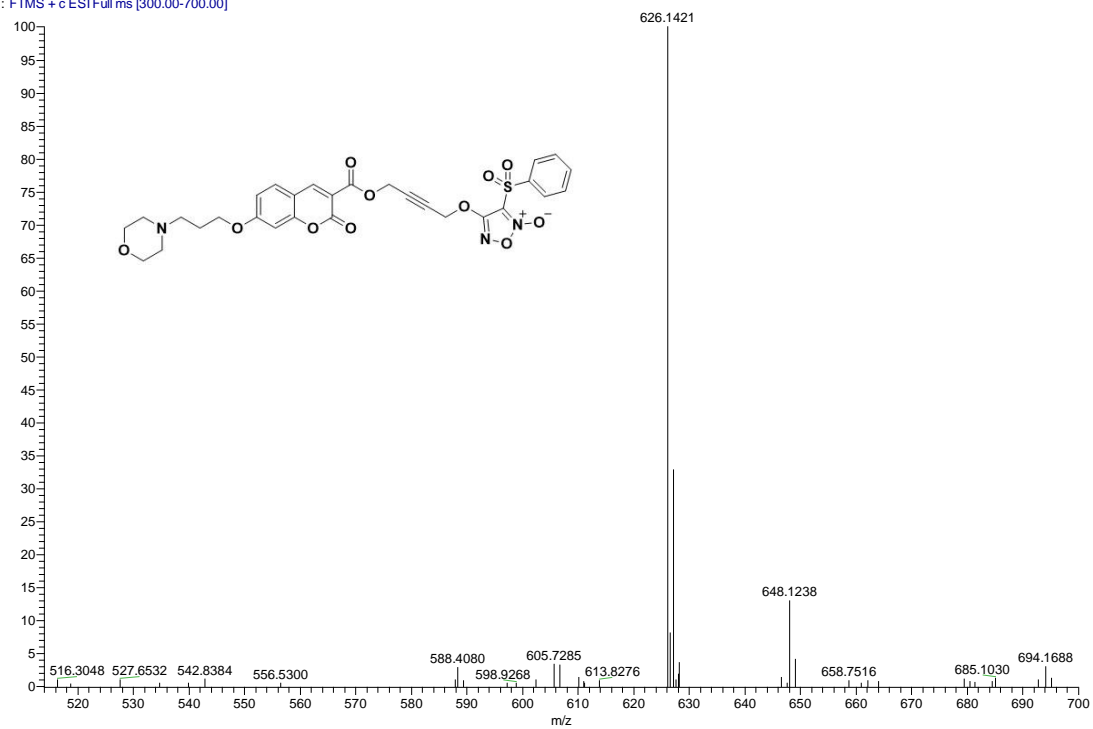


Fig.6 HRMS of 12b

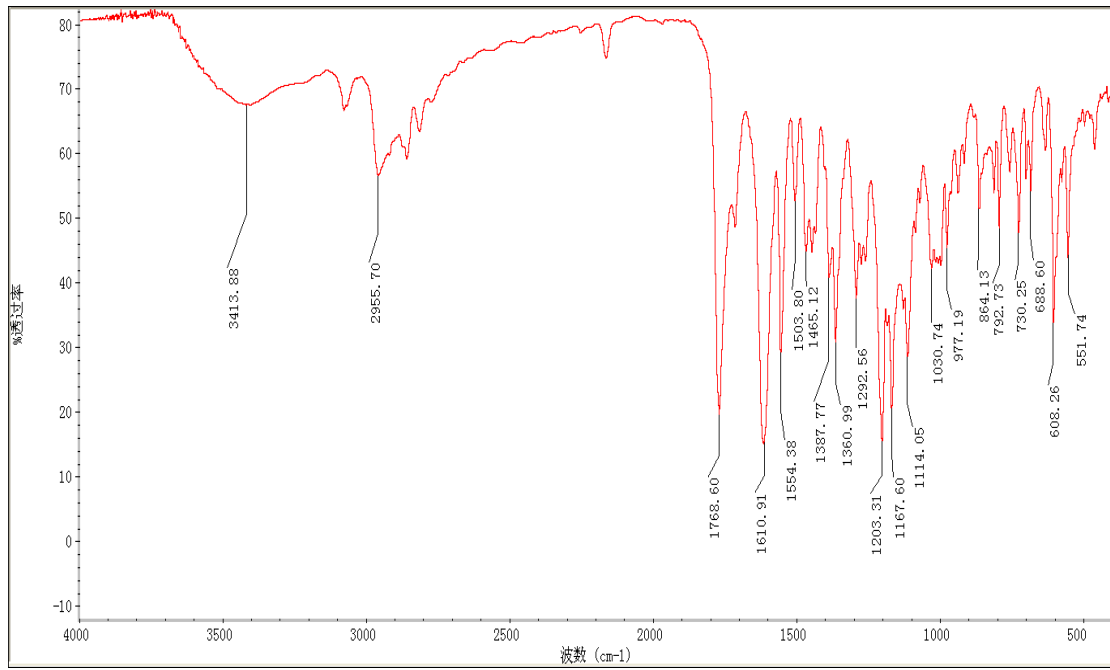


Fig.7 IR of 12c

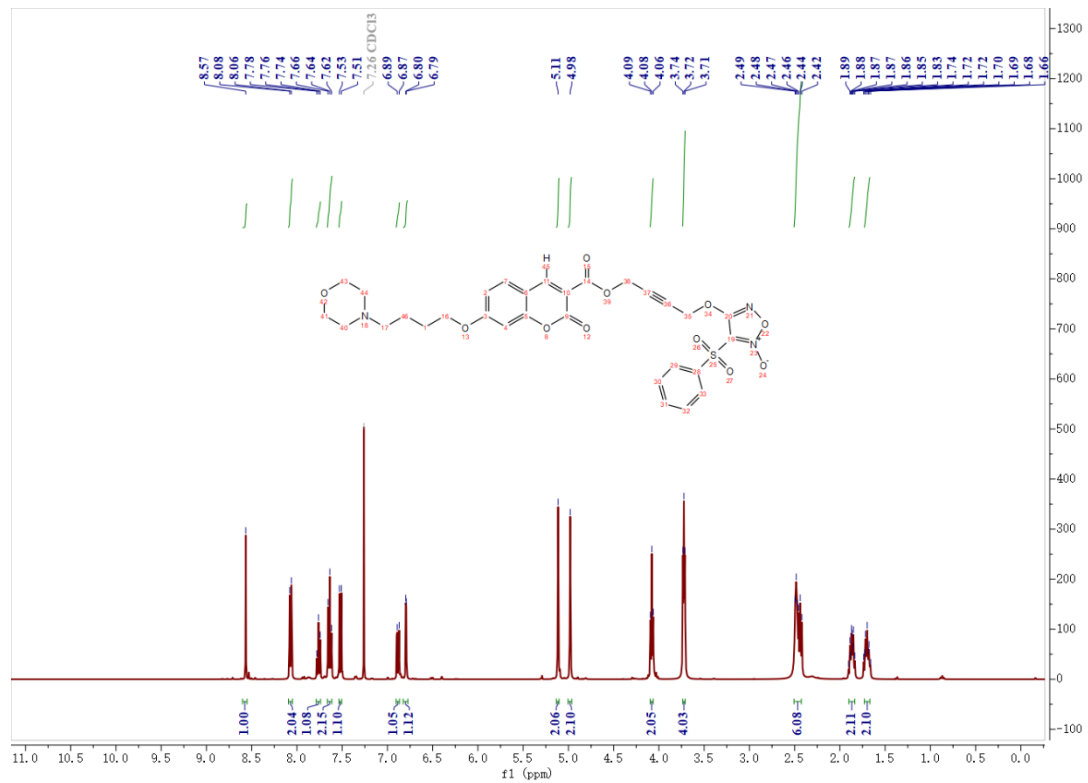


Fig.8 ¹H NMR of 12c

HP1 #22 RT: 0.18 AV: 1 NL: 1.79E7
T: FTMS + c ESI Full ms [300.00-700.00]

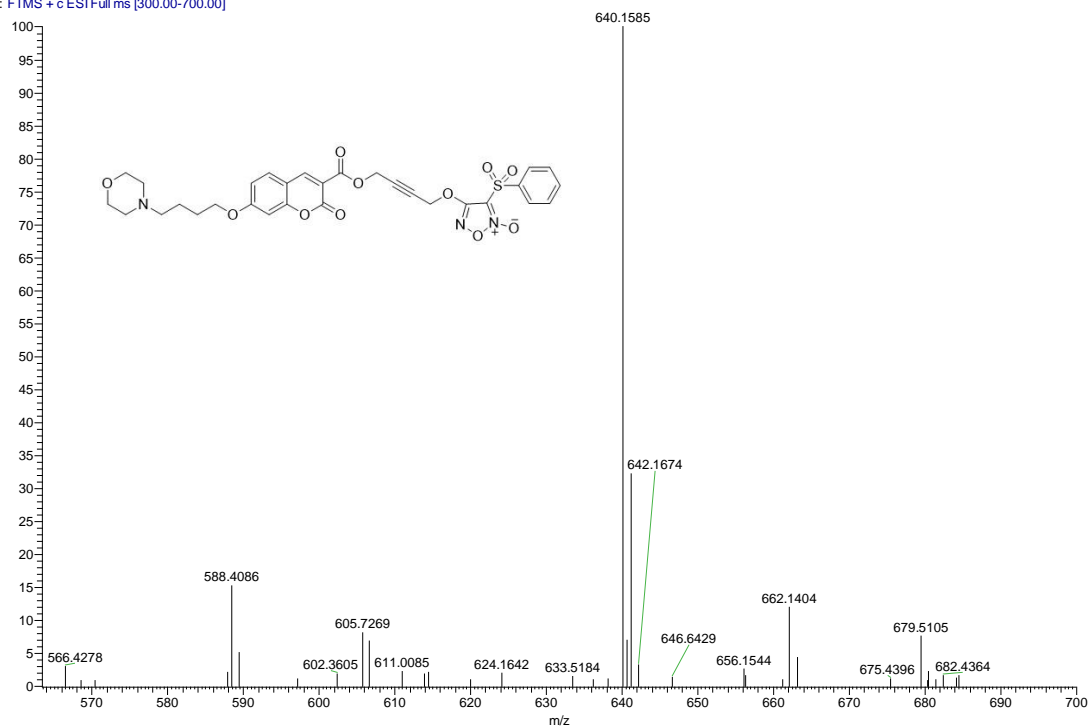


Fig.9 HRMS of 12c

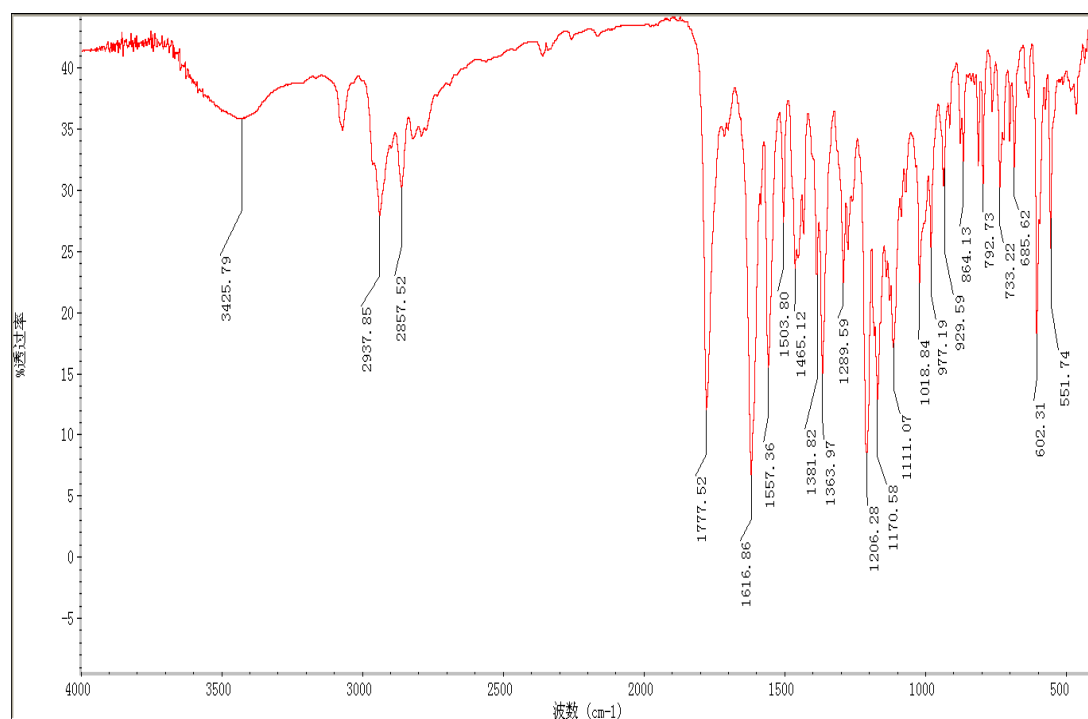


Fig.10 IR of 12d

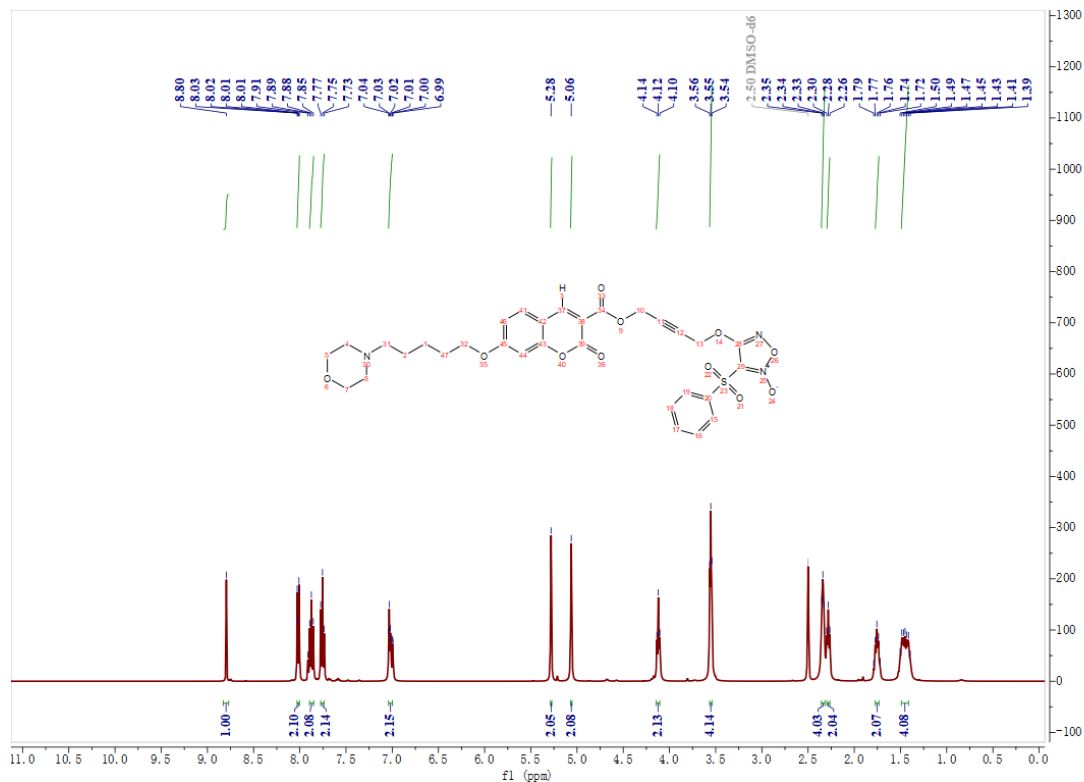


Fig.11 ^1H NMR of 12d

hp4 #12 RT: 0.16 AV: 1 NL: 3.33E7
T: FTMS + c APCI corona Full ms [100.00-1500.00]

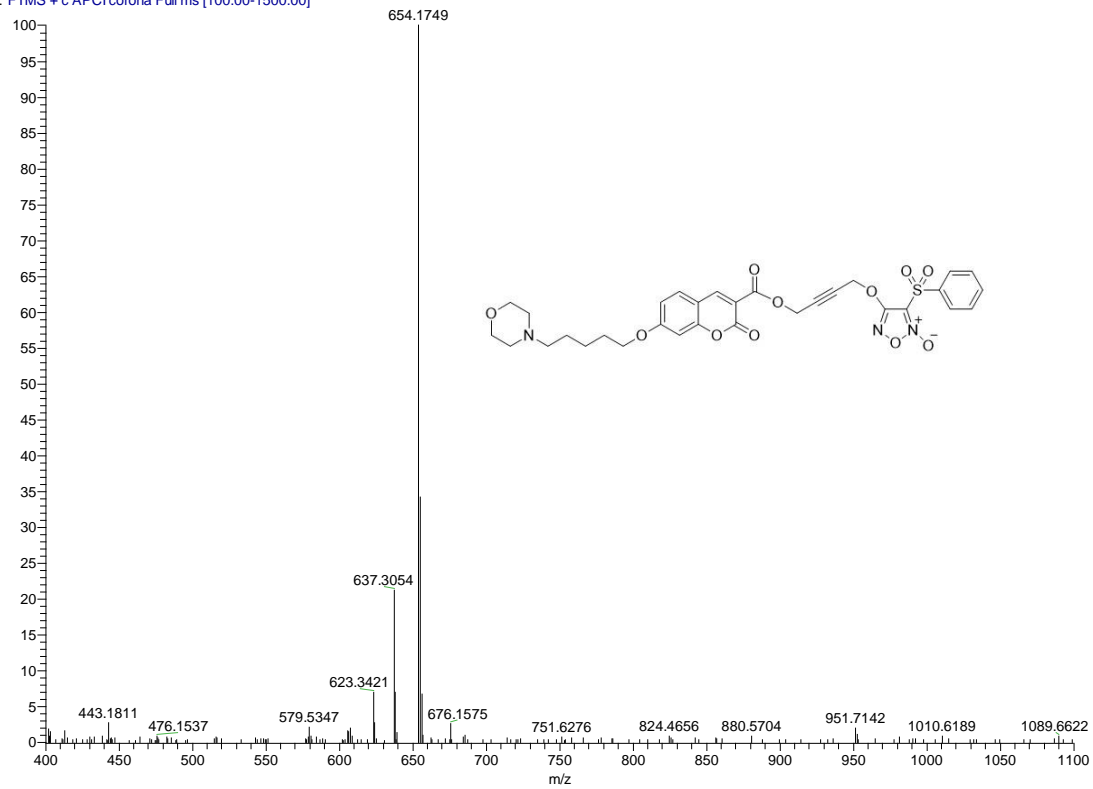


Fig.12 HRMS of 12d

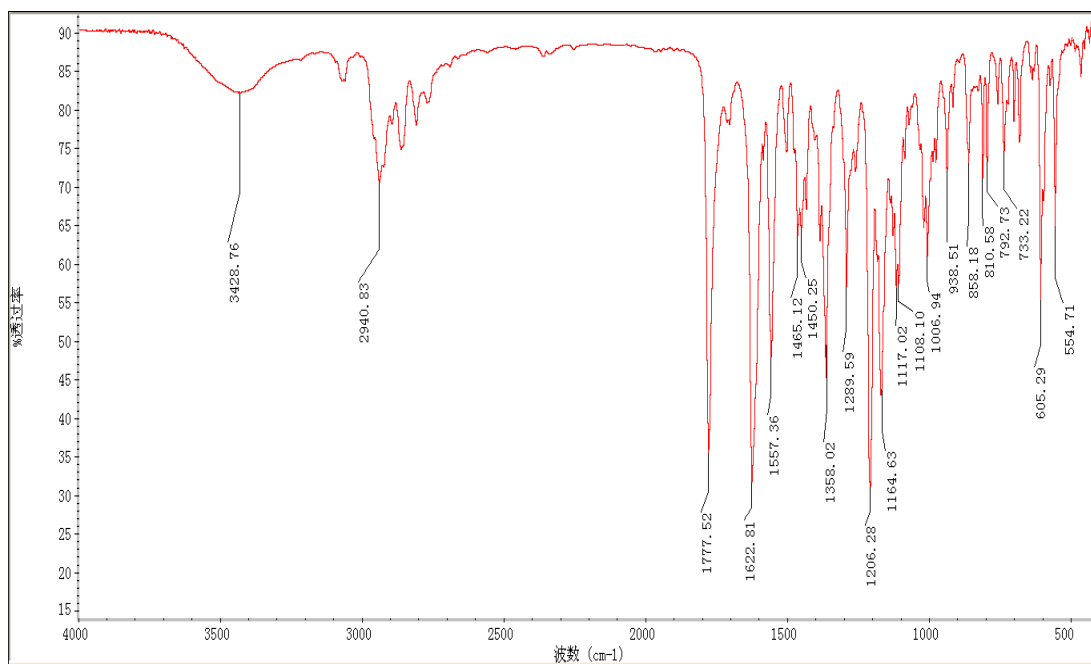


Fig.13 IR of 12e

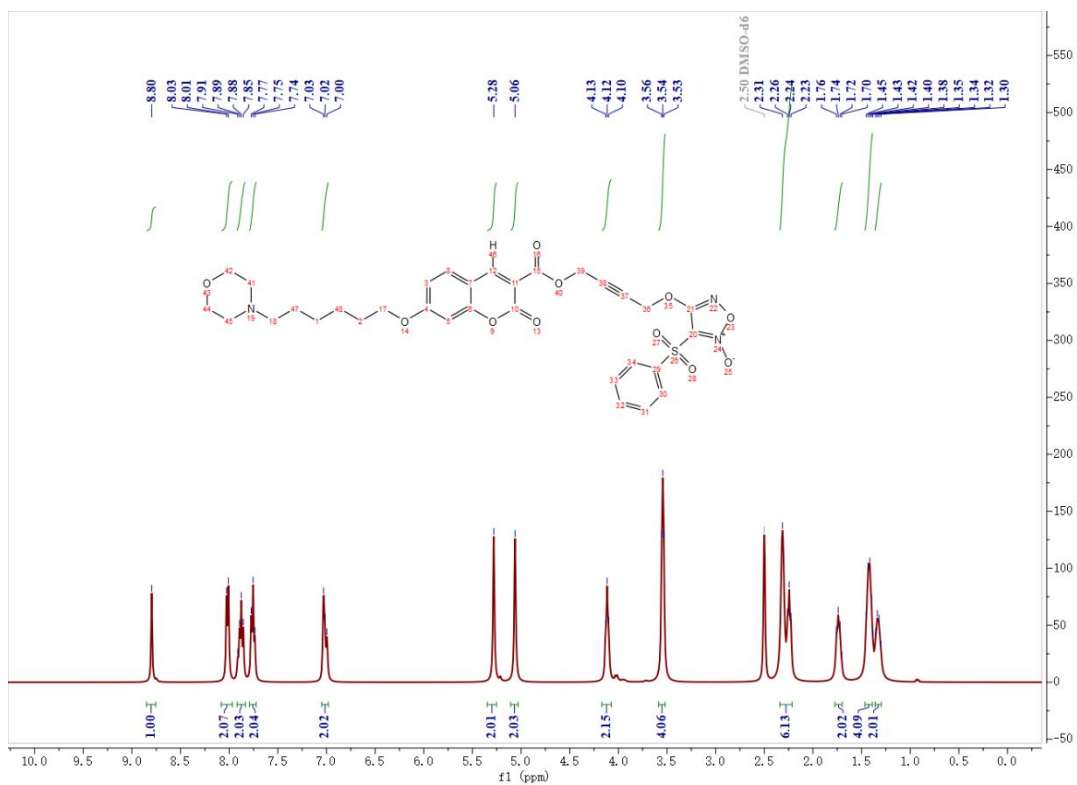


Fig.14 ¹H NMR of 12e

hp5_161102101846 #11 RT: 0.14 AV: 1 NL: 1.50E7
T: FTMS + c ESI Full ms [100.00-1300.00]

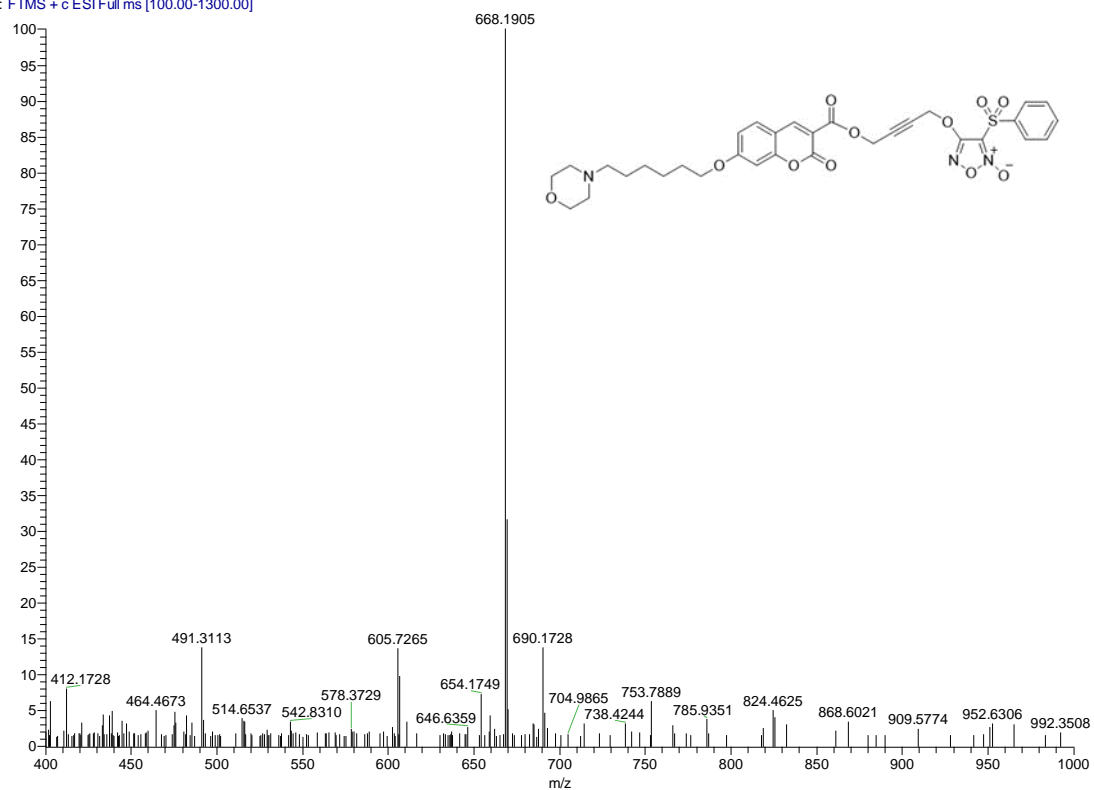


Fig.15 HRMS of 12e

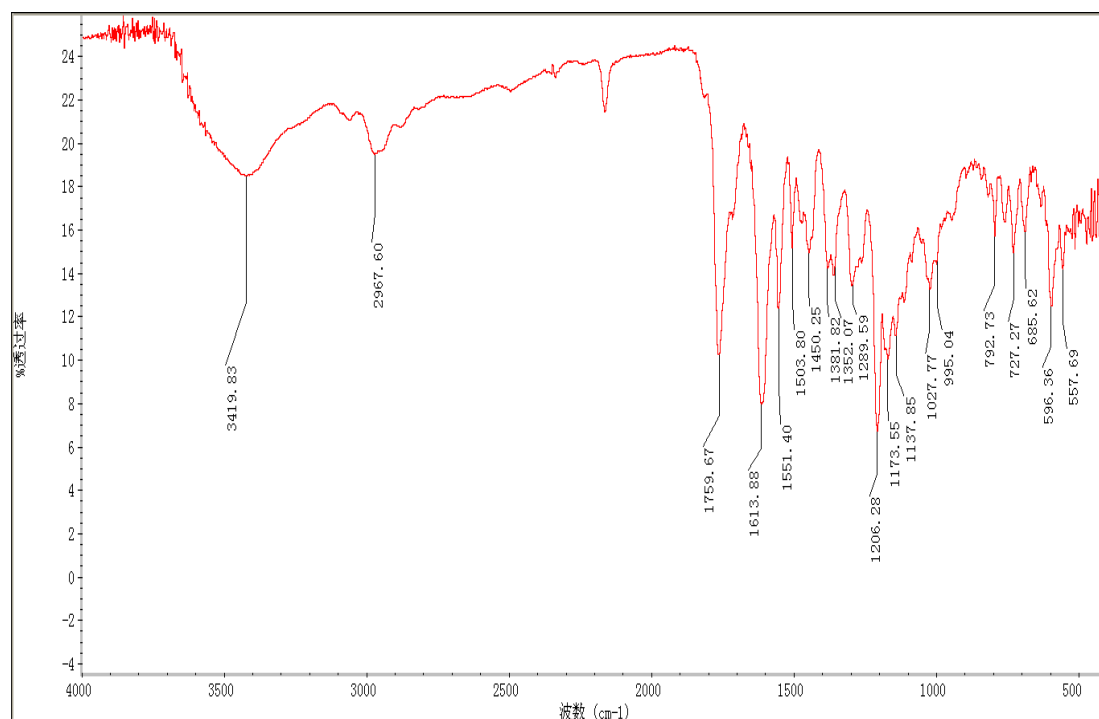


Fig.16 IR of 12f

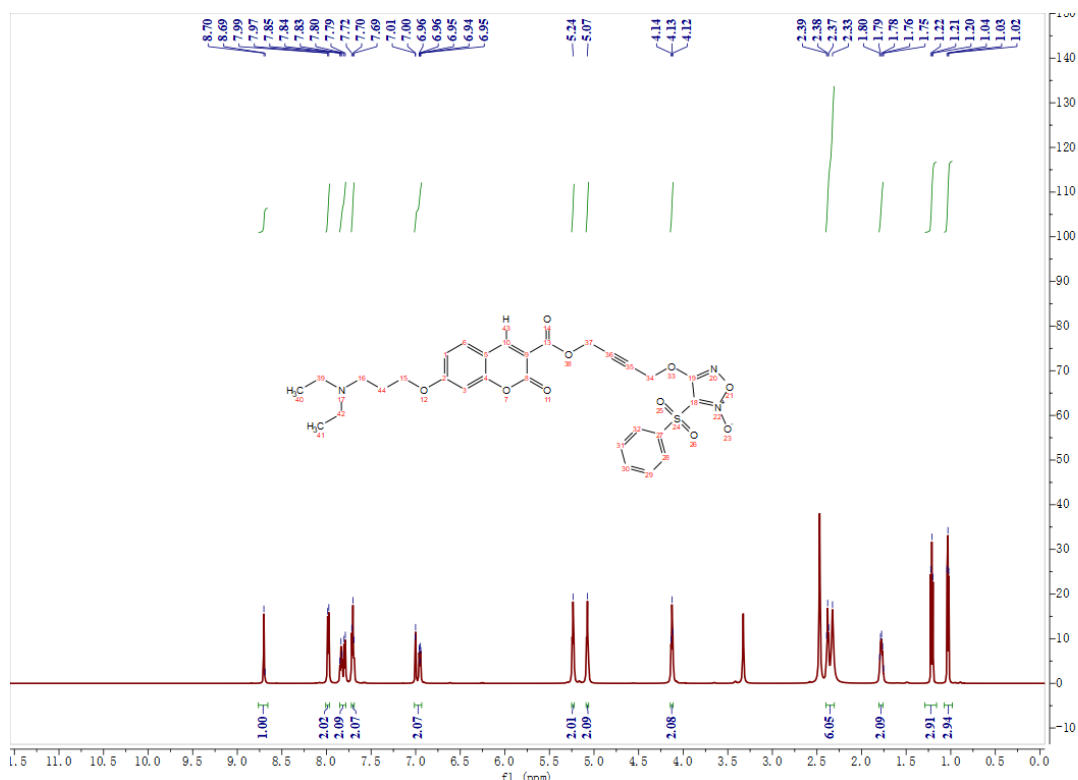


Fig.17 ¹H NMR of 12f

hp9 #12 RT: 0.15 AV: 1 NL: 4.52E7
T: FTMS + c APCI corona Full ms [100.00-1500.00]

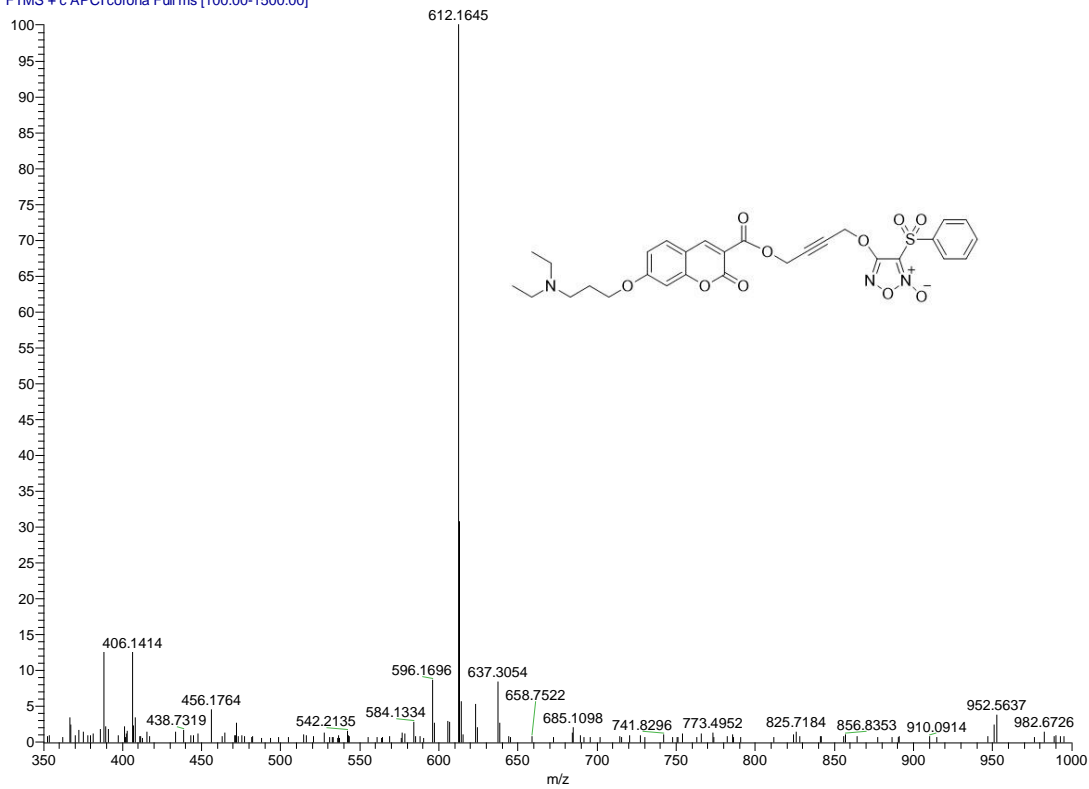


Fig.18 HRMS of 12f

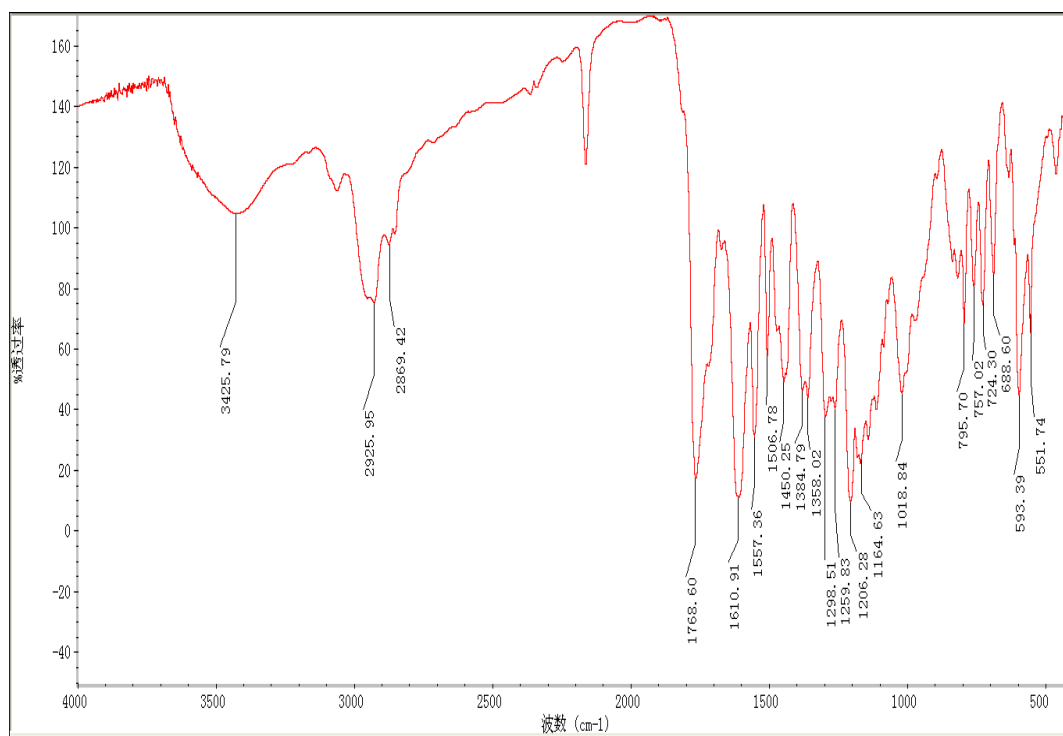


Fig.19 IR of 12g

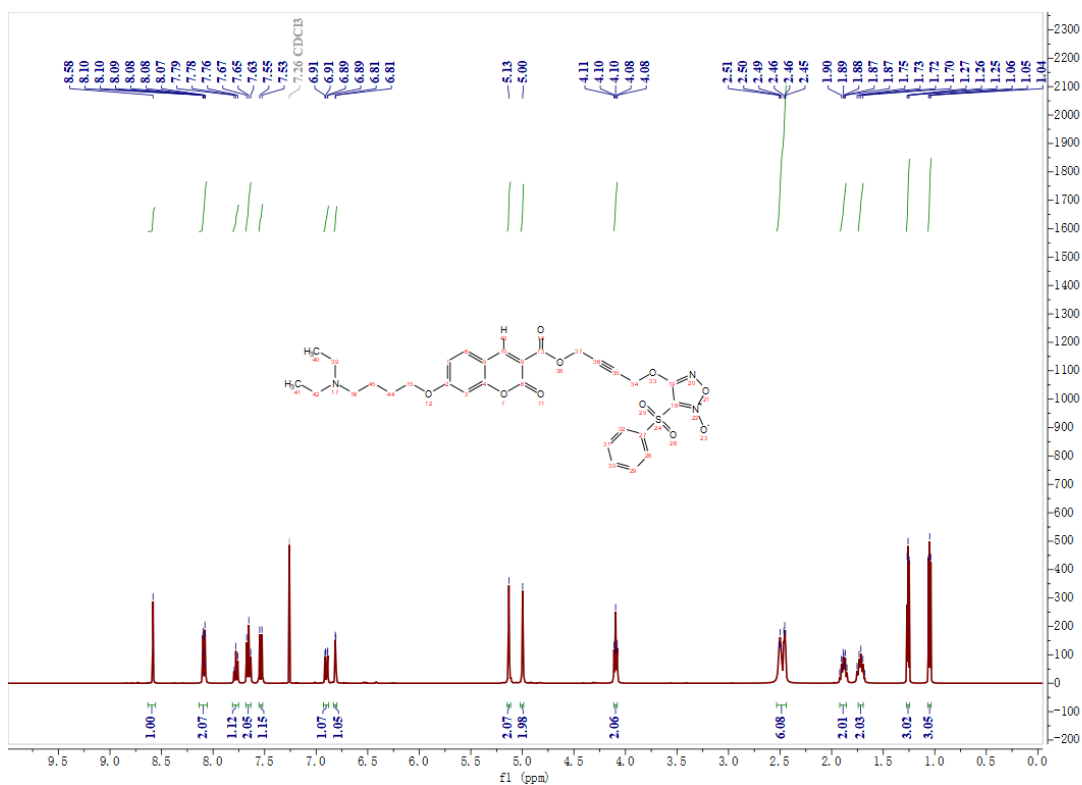


Fig.20 ¹H NMR of 12g

HP1 #9 RT: 0.11 AV: 1 NL: 3.31E7
T: FTMS + c.APCI.corona Full ms [100.00-1000.0

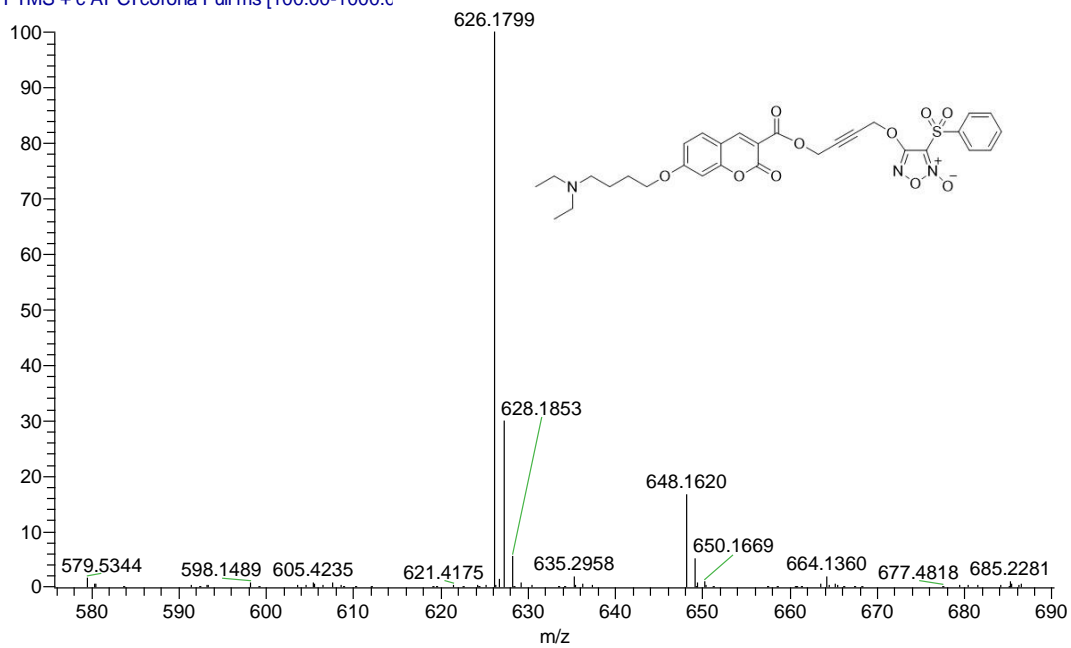


Fig.21 HRMS of 12g

Referee's comment 2

-4. In this experiment we don't observe toxic reactions such as weight loss.

