

**CONCISE FORMAL SYNTHESIS ON SOLANDELACTONE E  
BASED ON A REGIOSELECTIVE CYCLOPROPANATION**

**Norihiko Kawasaki, Yu Kikuoka, Keita Komine, Hayato Fukuda,  
and Jun Ishihara\***

Graduate School of Biomedical Sciences, Nagasaki University, 1-14 Bunkyo-machi, Nagasaki  
852-8521, Japan  
E-mail: jishi@nagasaki-u.ac.jp

**Supporting Information**

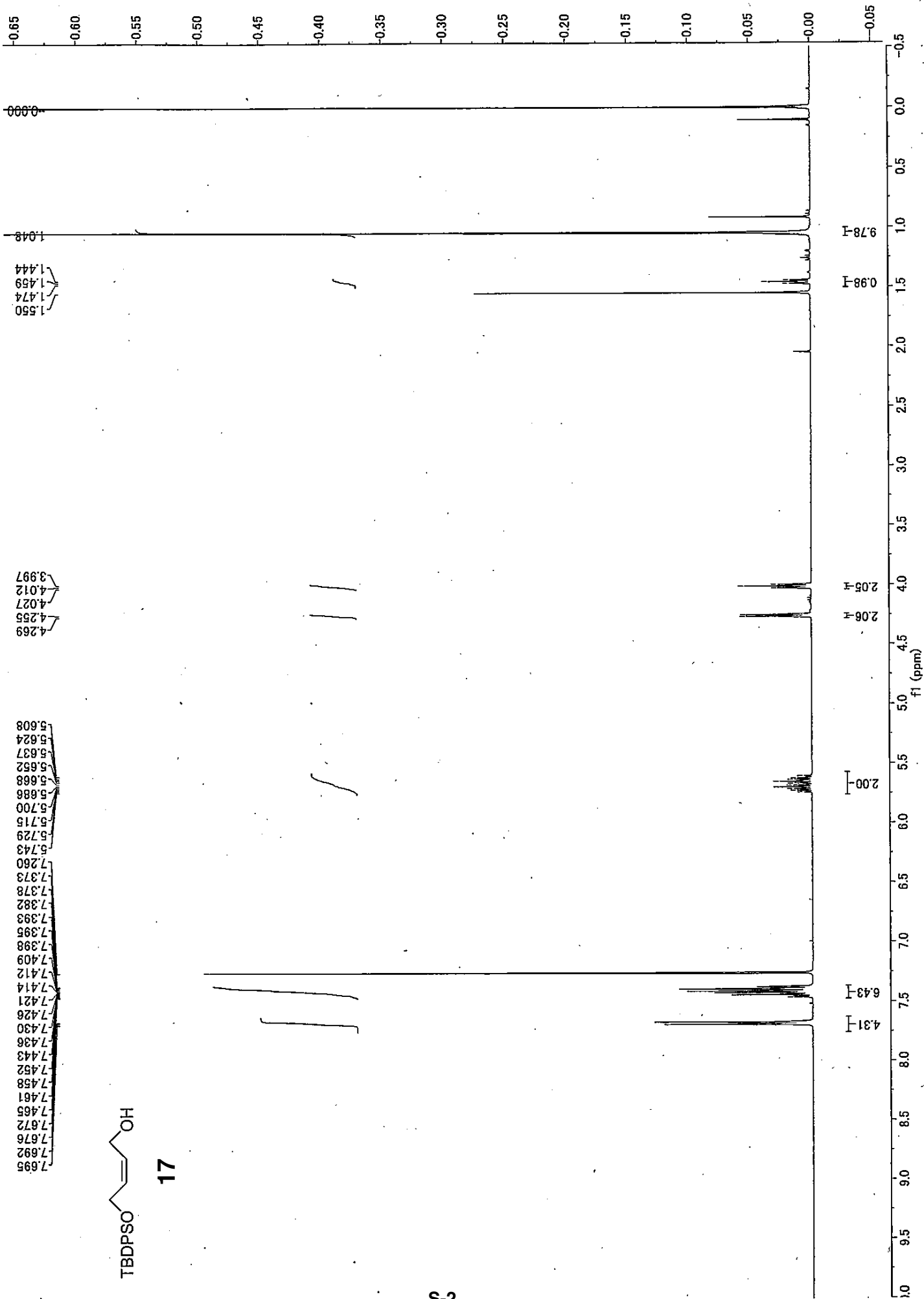
Spectral Data (17, 15, MTPA esters of 15, 14, L1, 23 and 13)

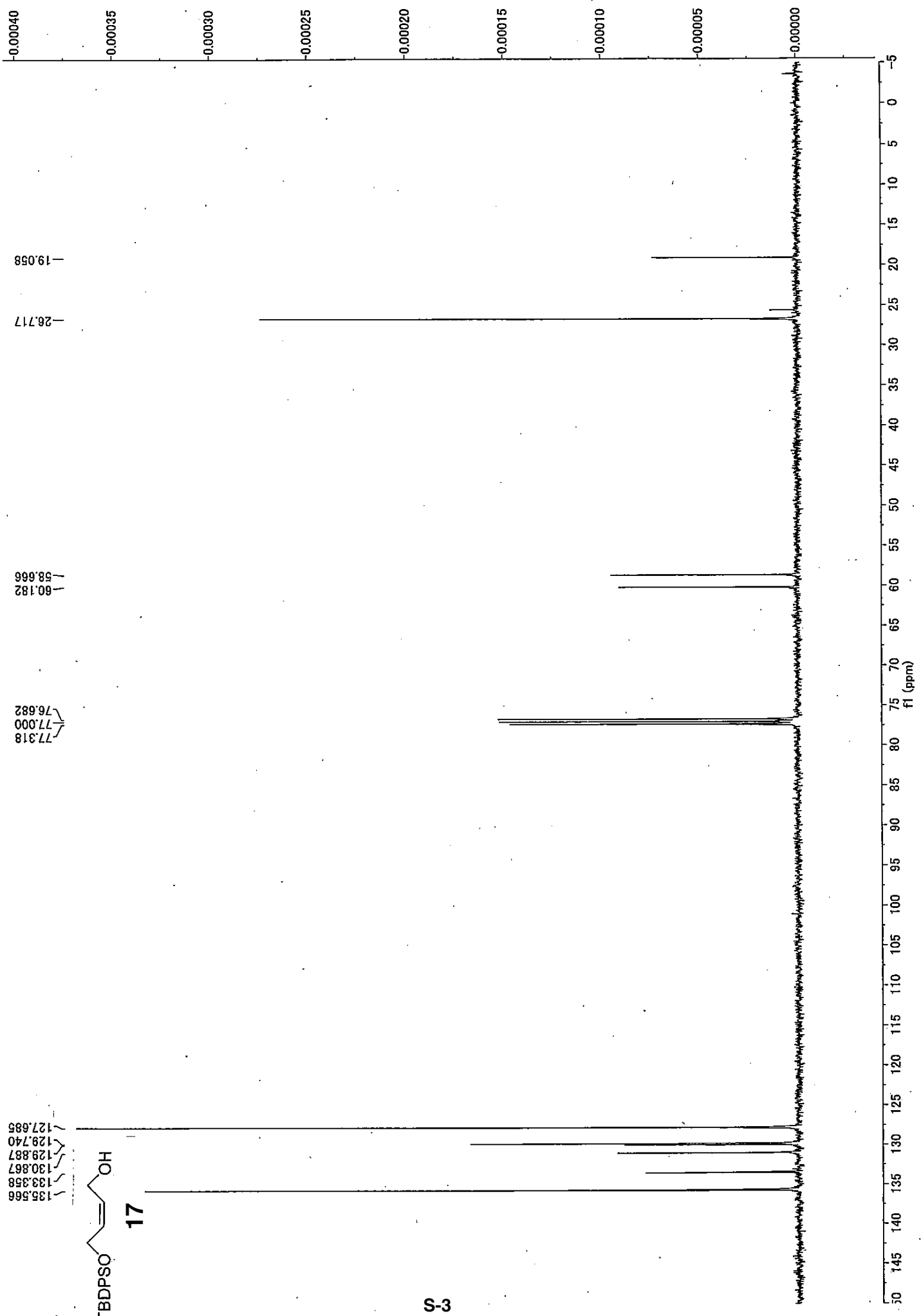
S-2

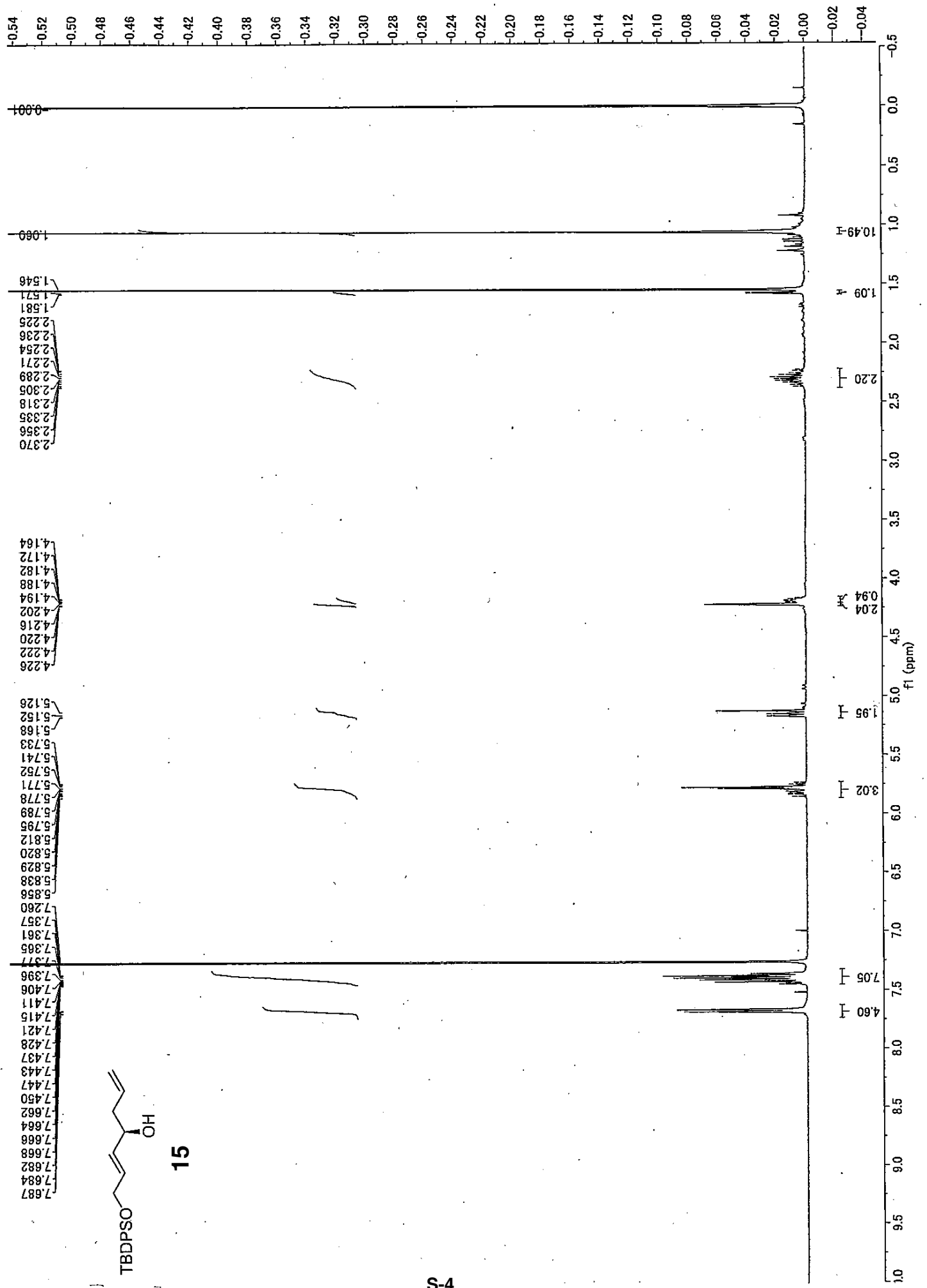


17

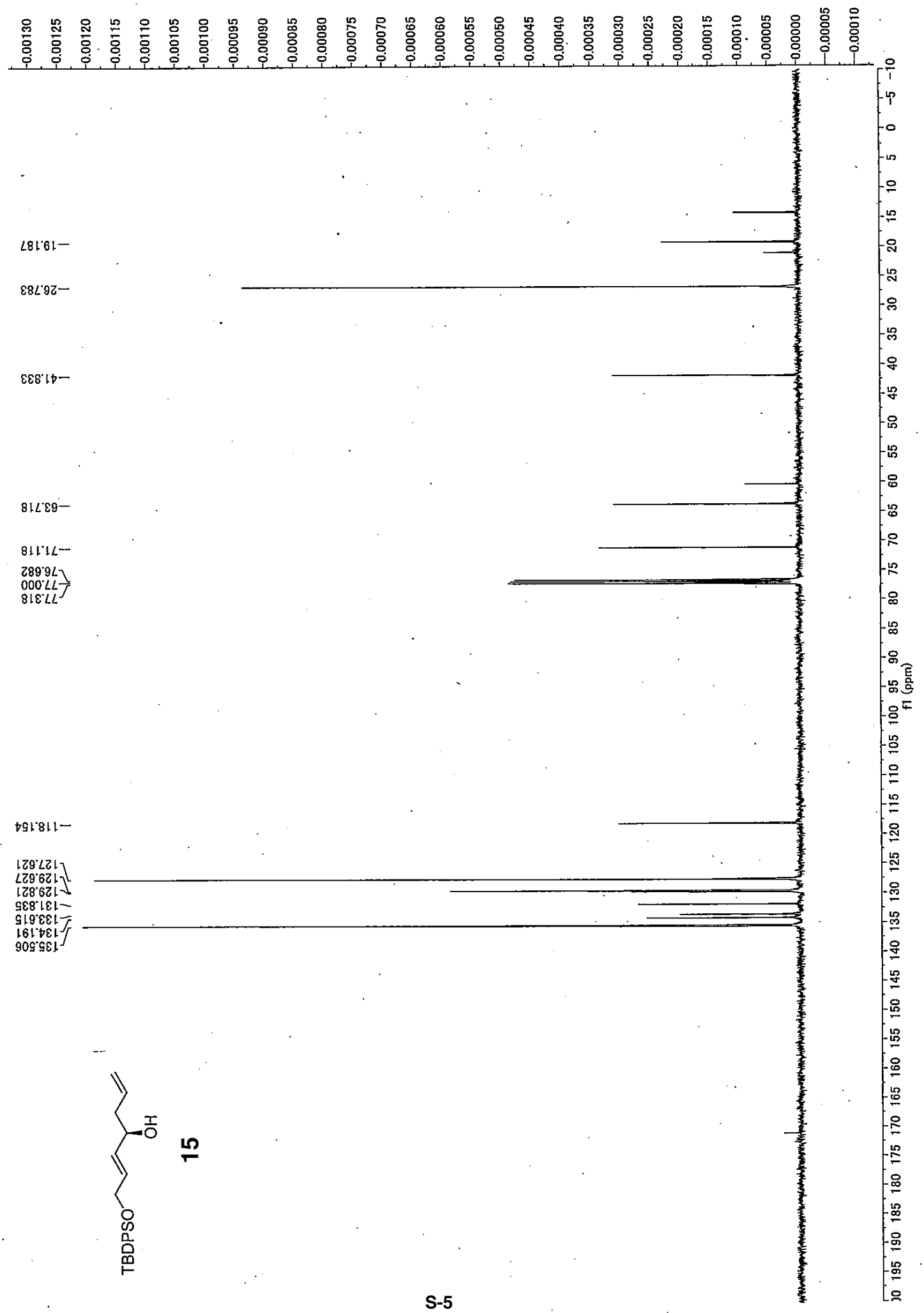
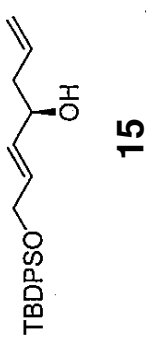
S-2

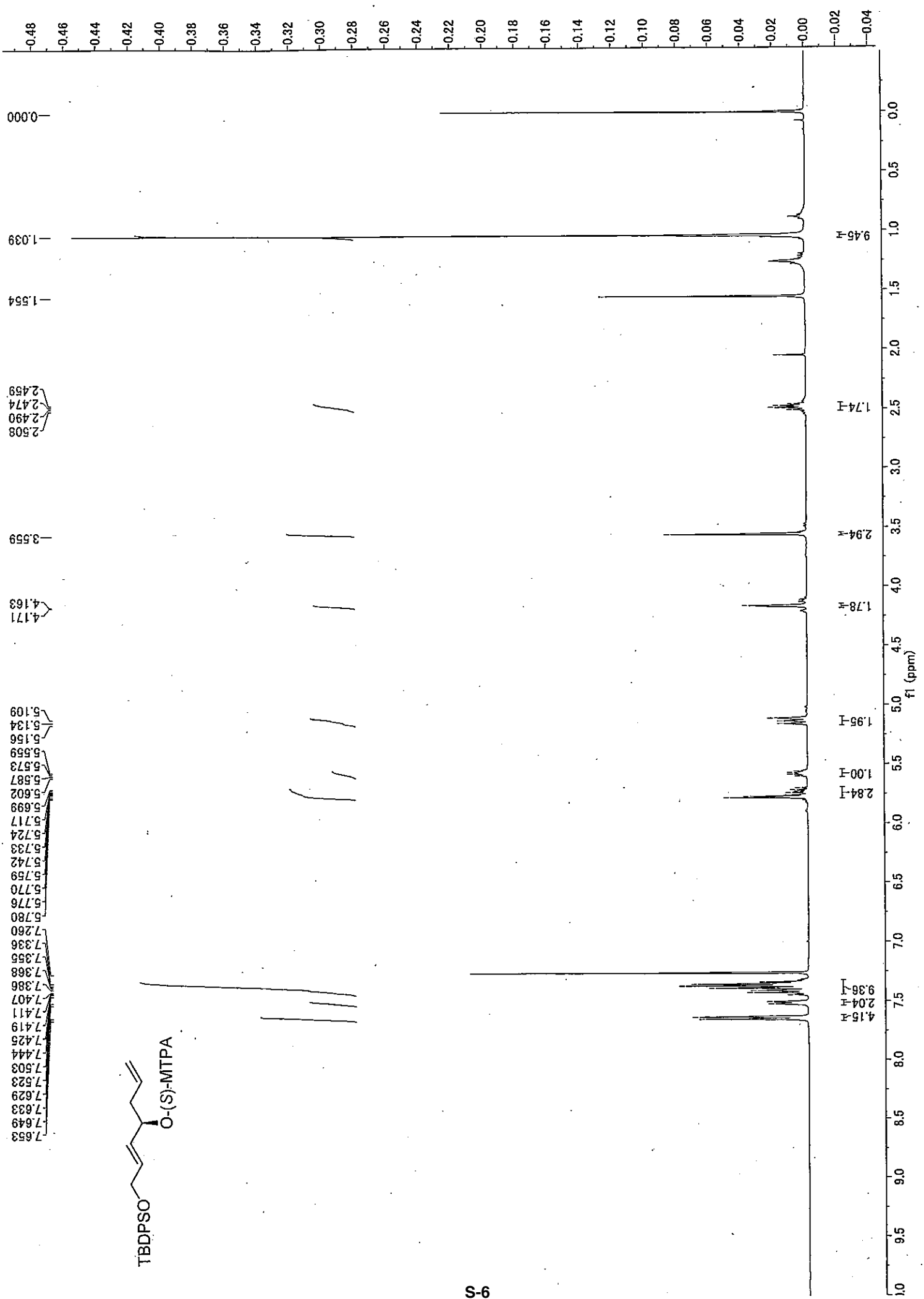


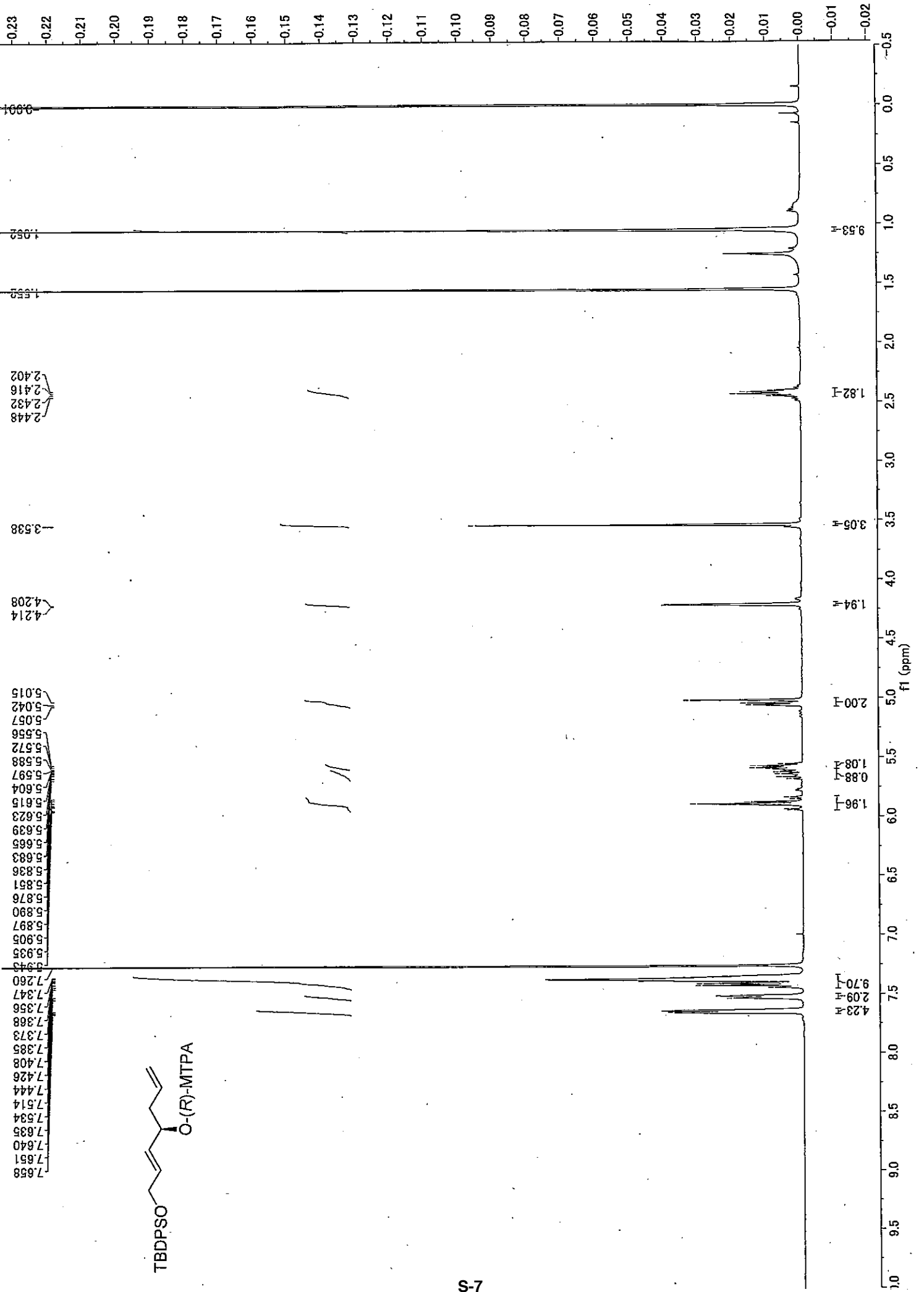


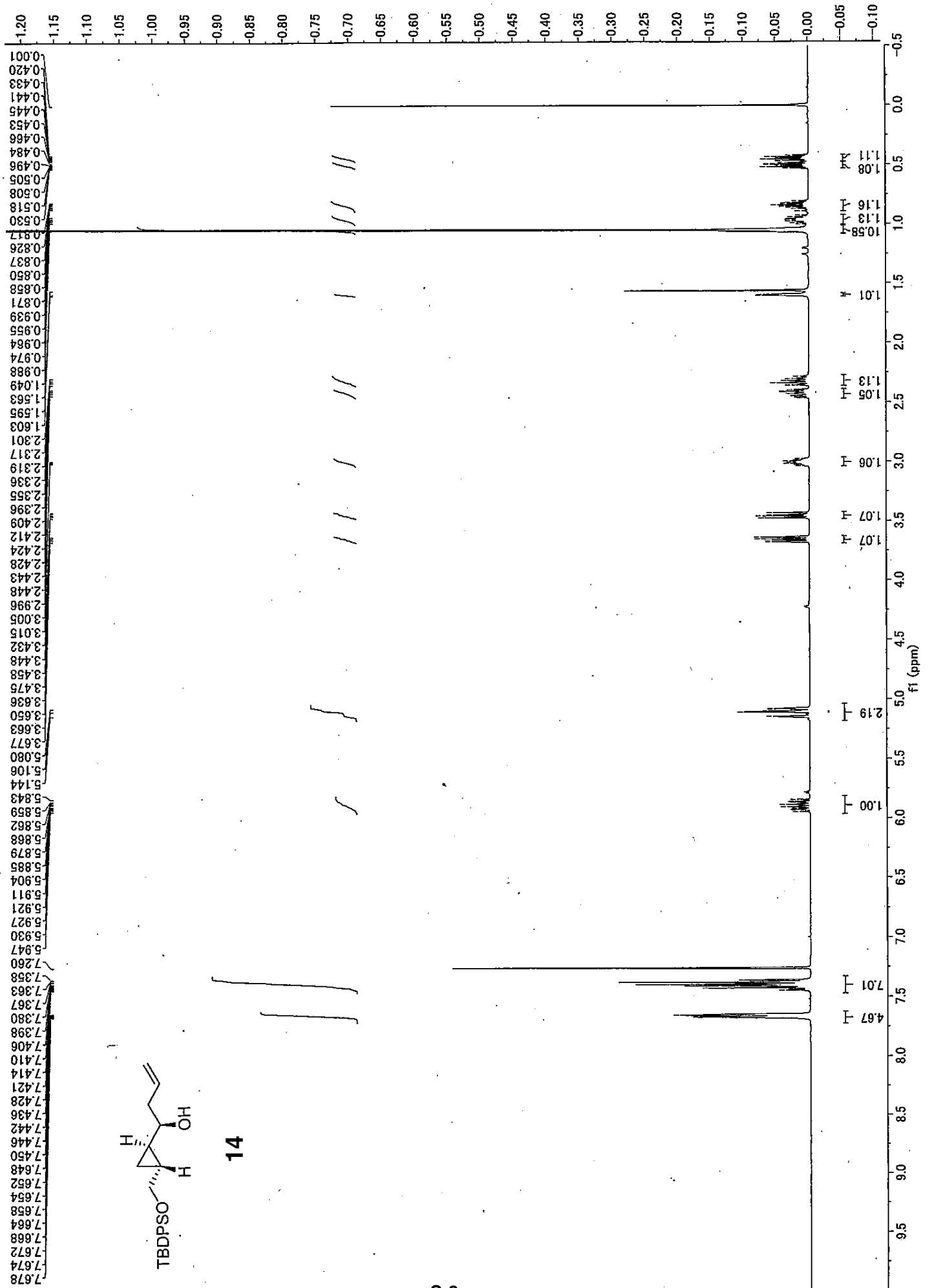


15

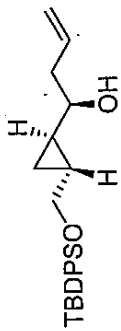
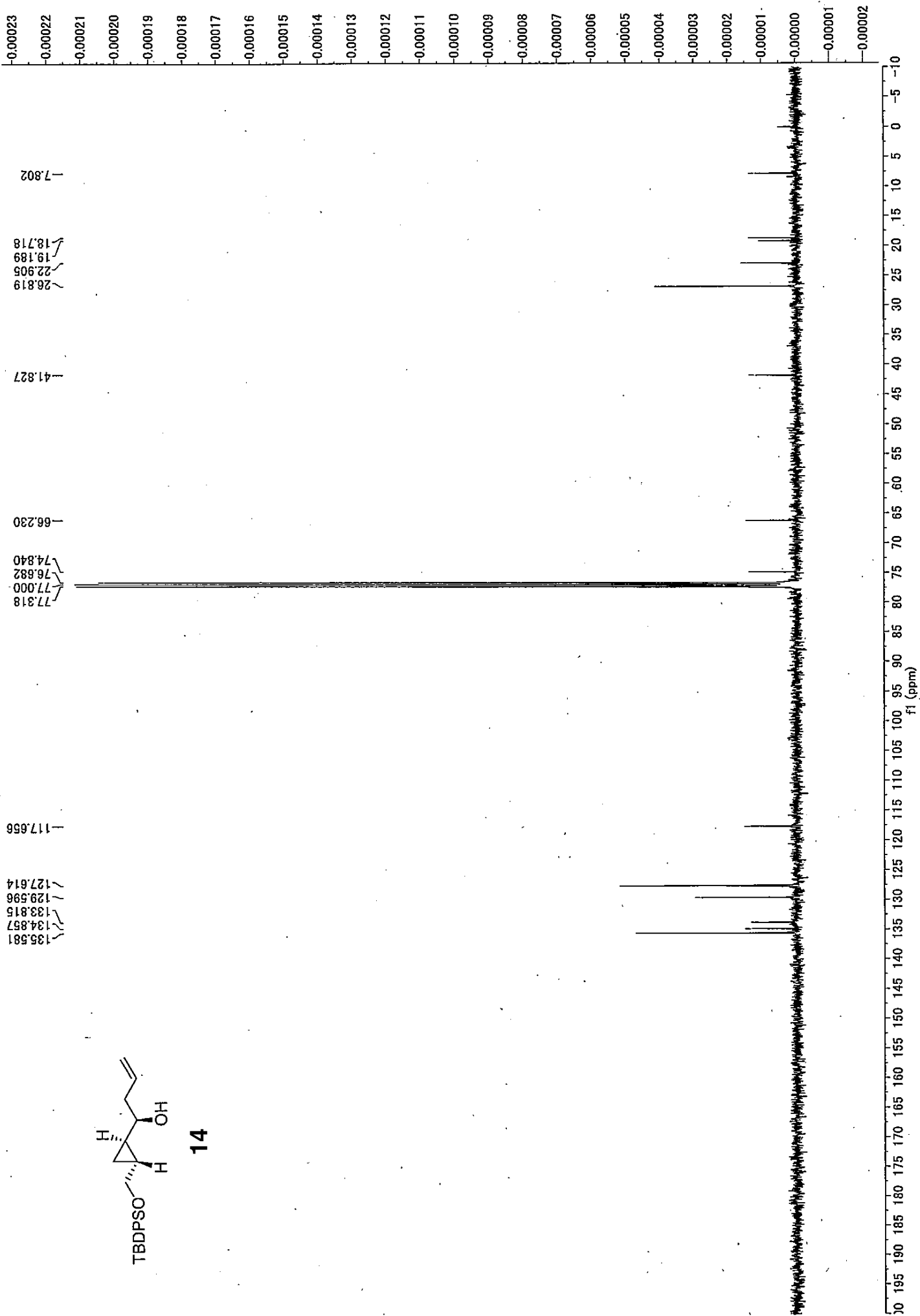




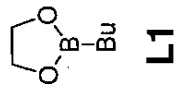
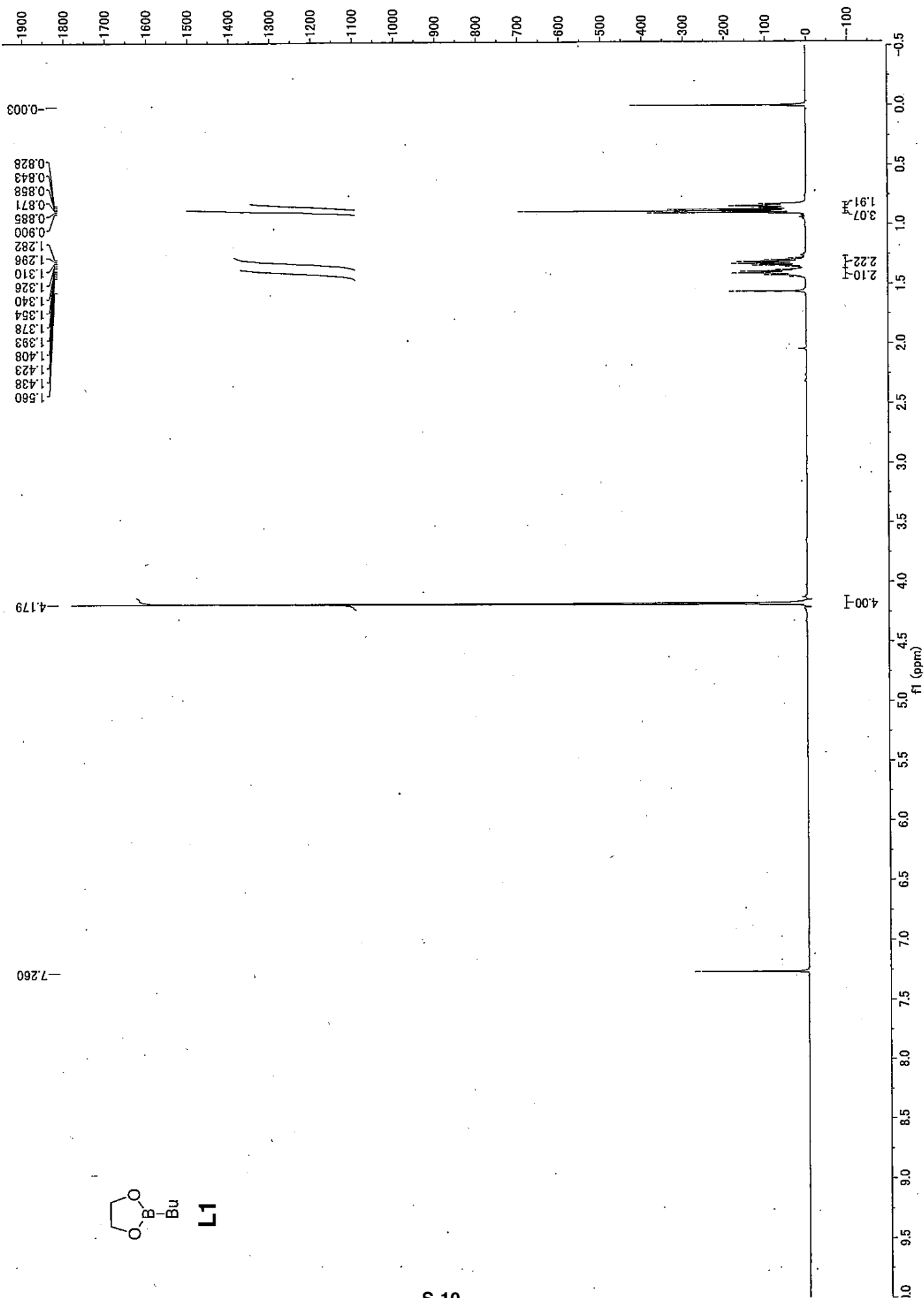


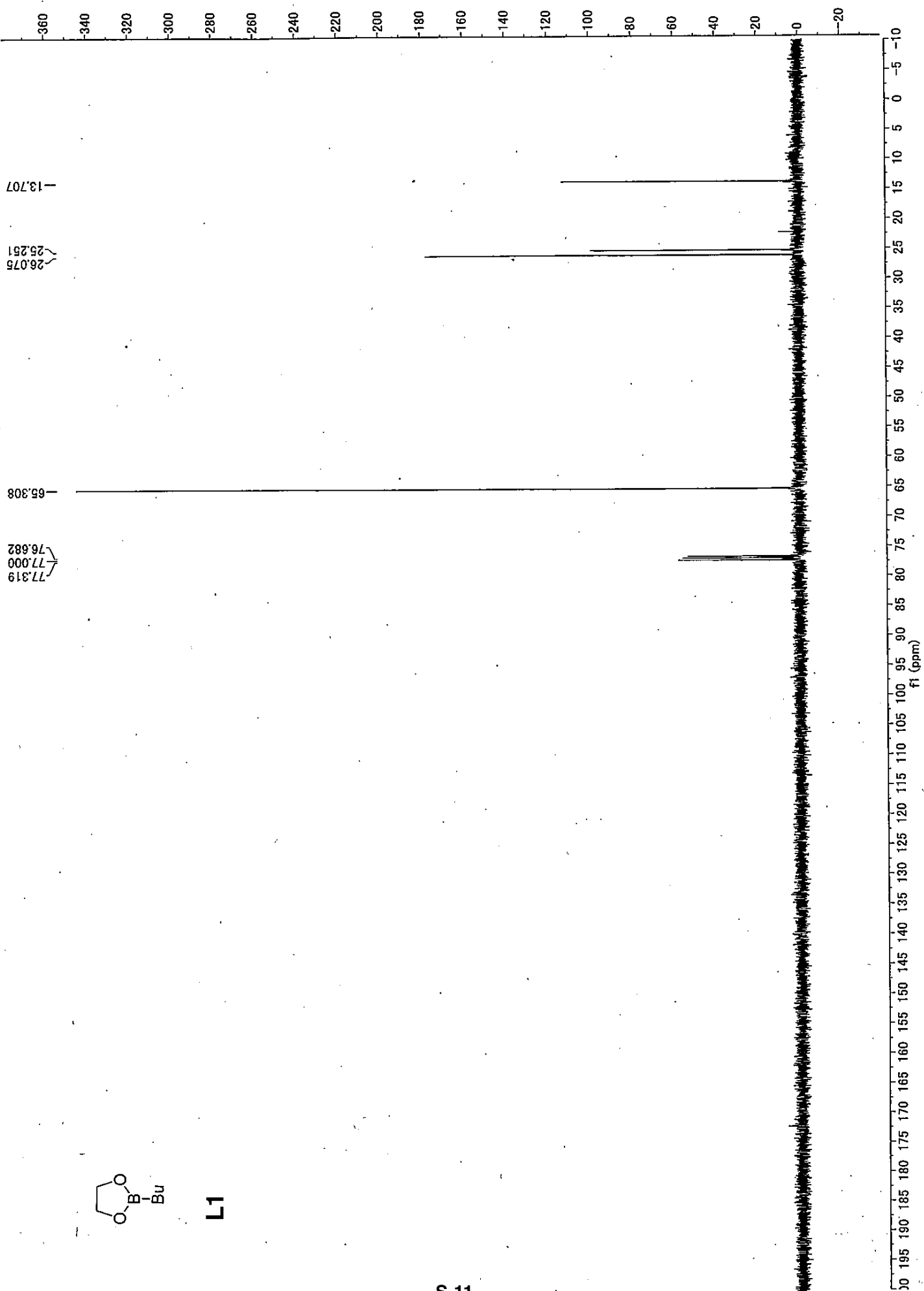


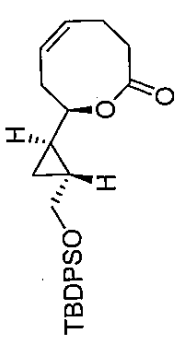
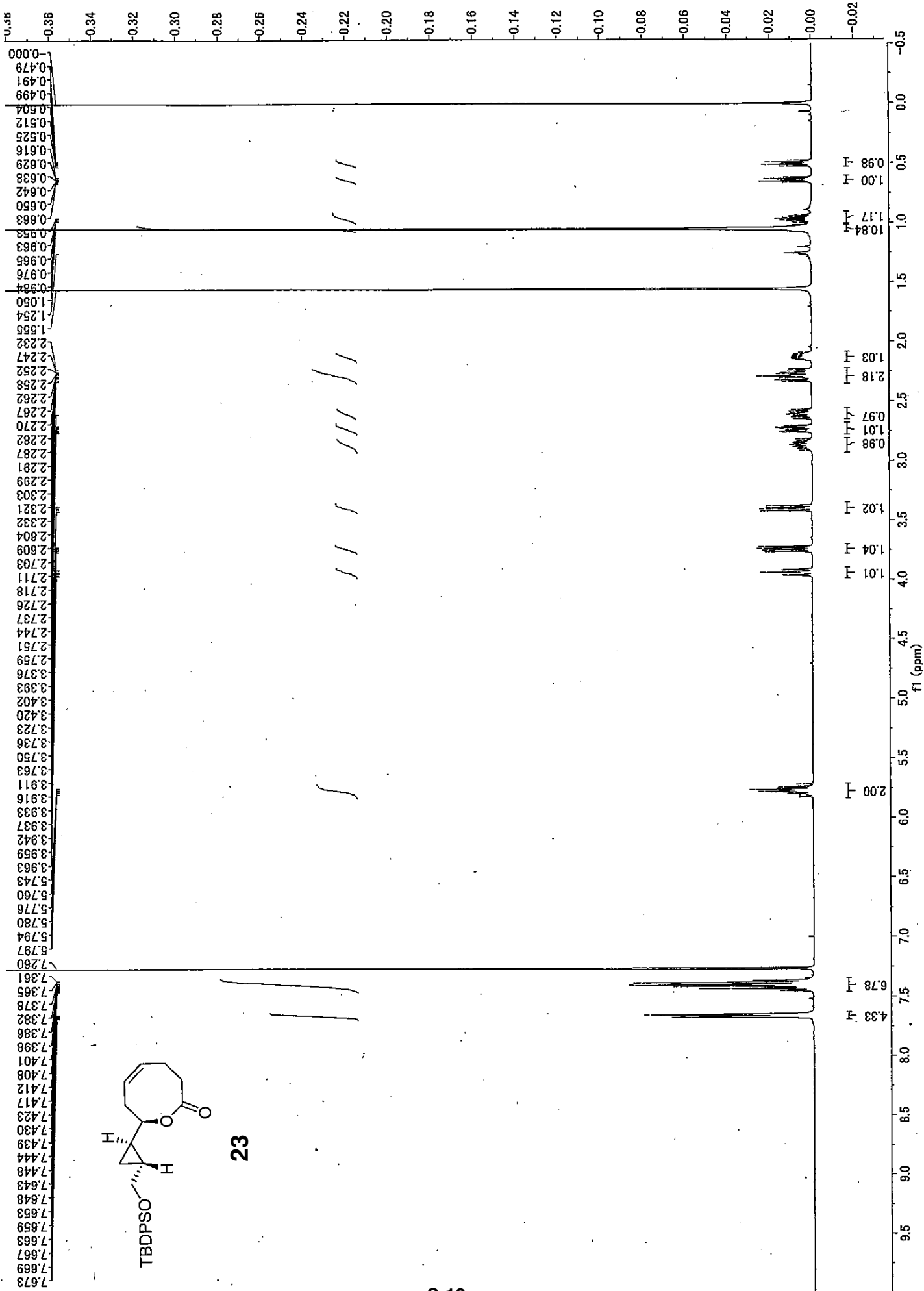




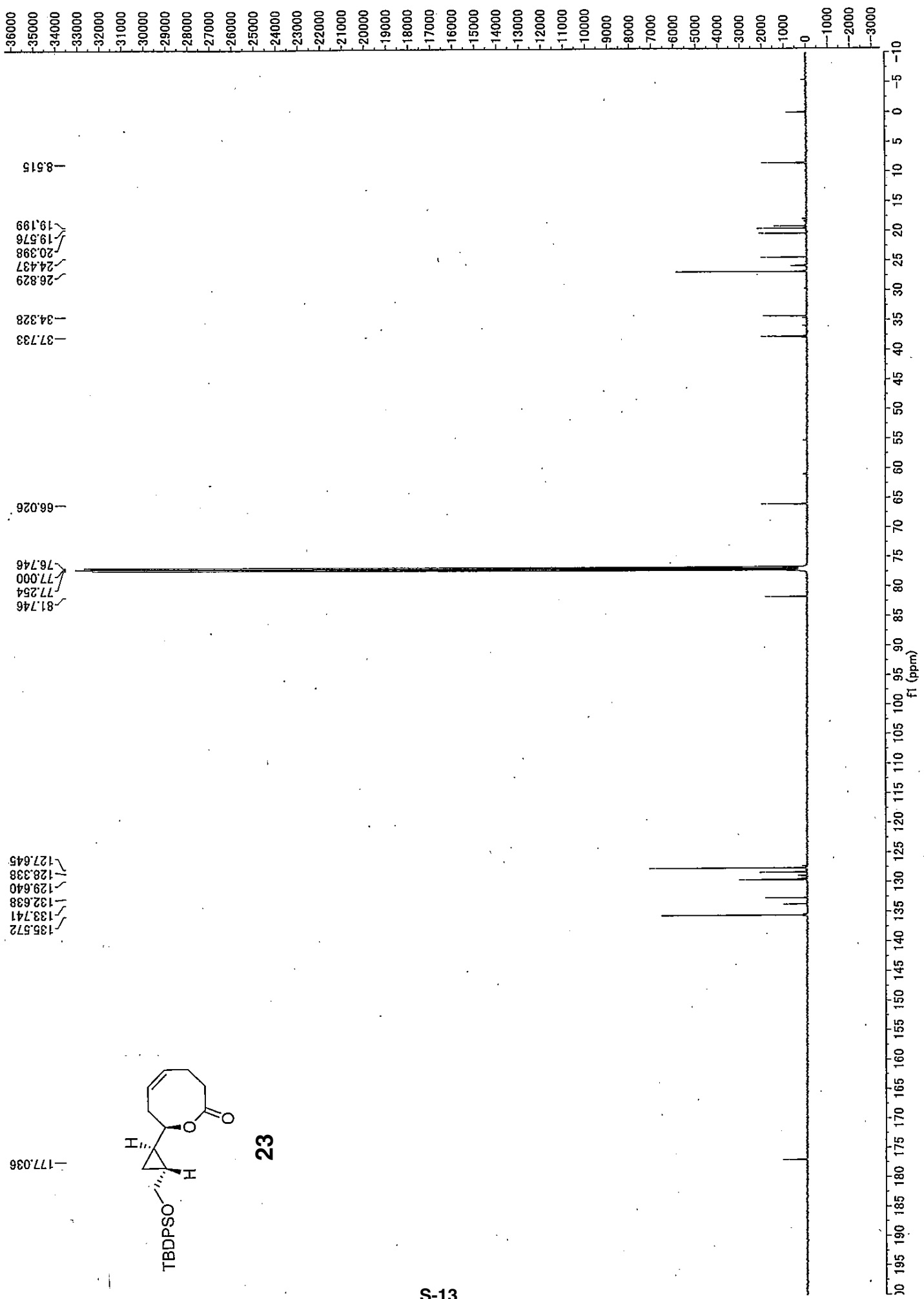
14

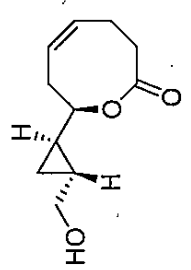
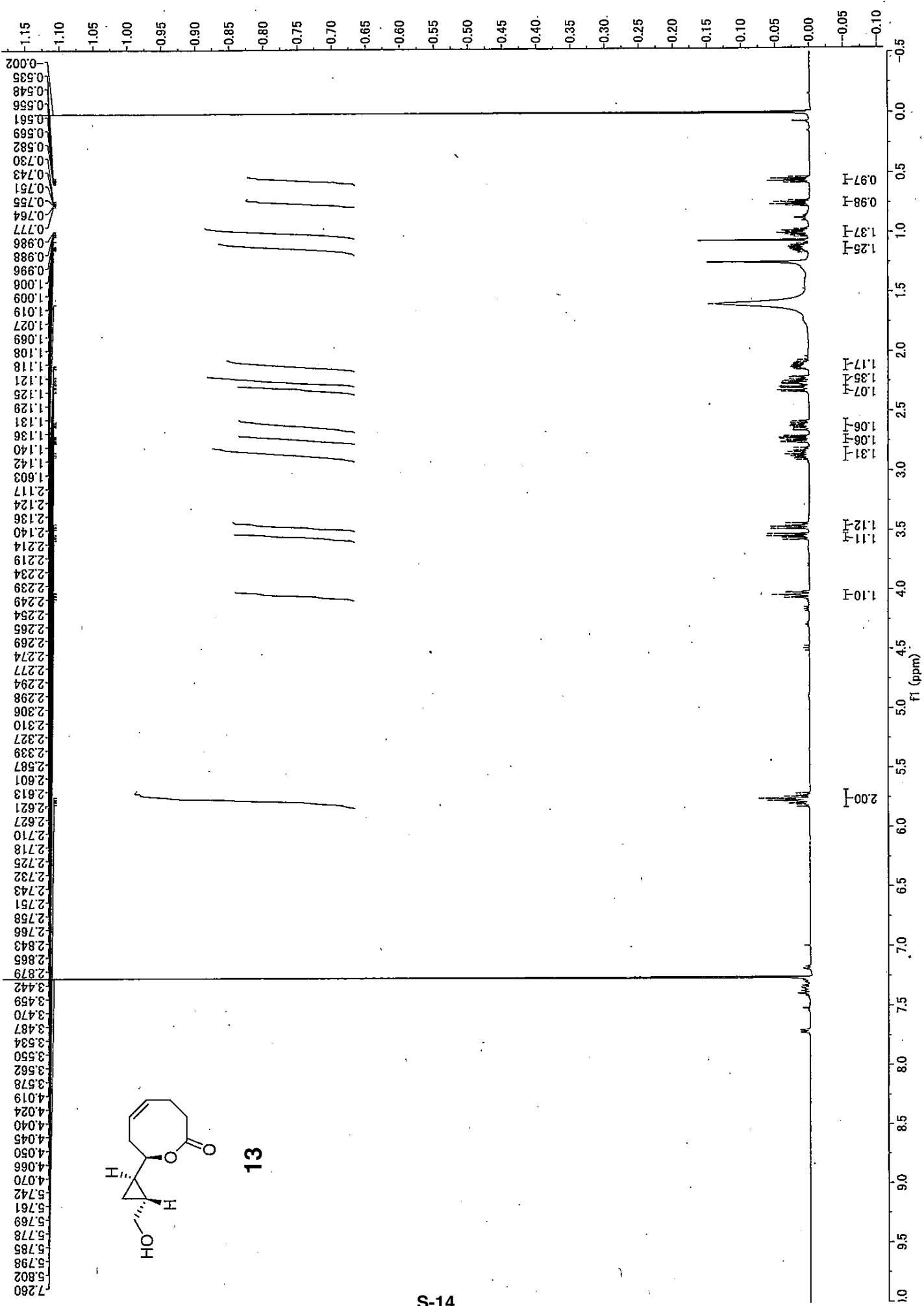




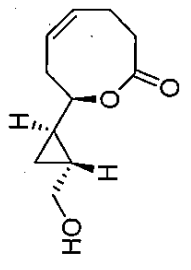
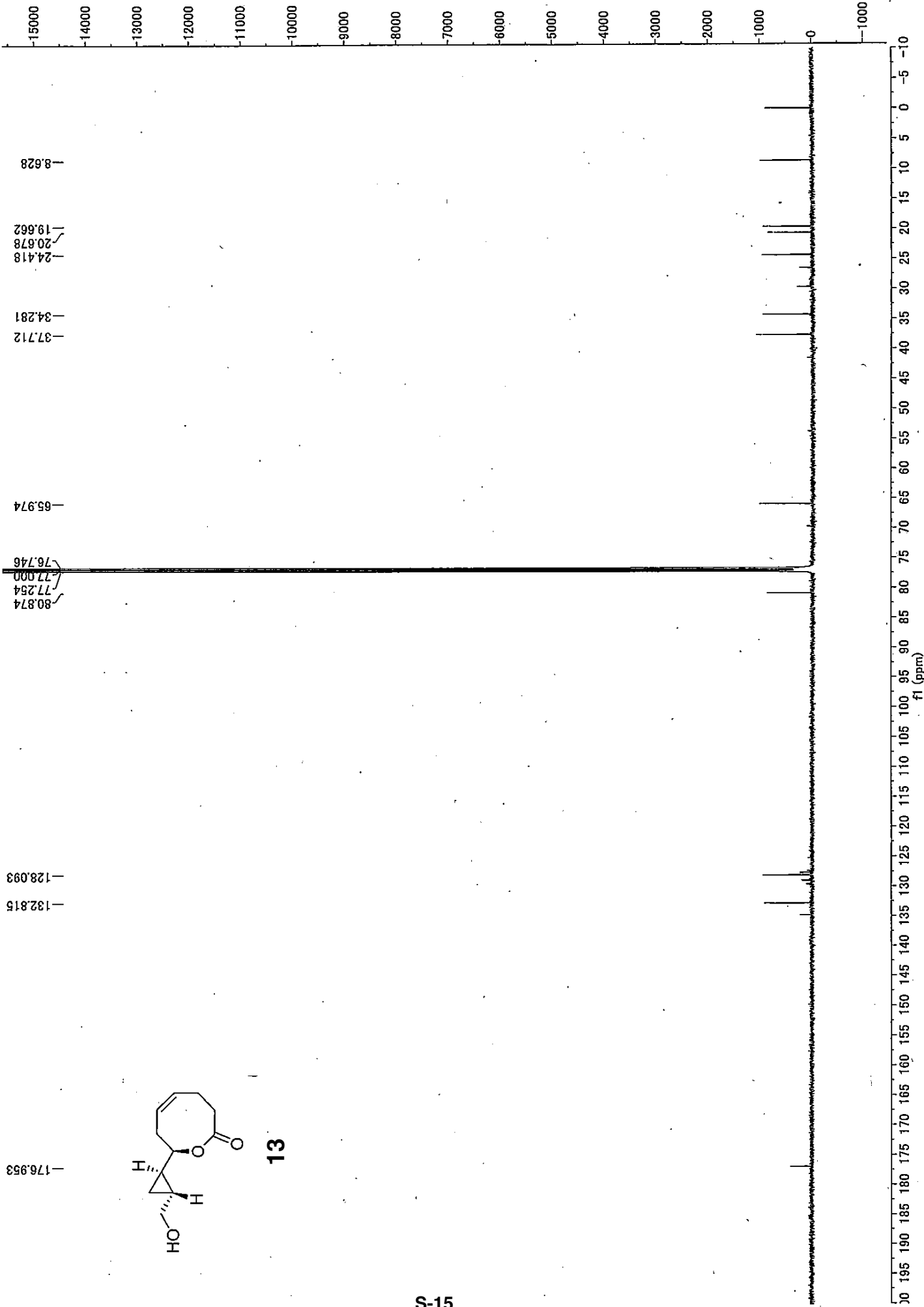


23





13



13