

**CHEMICAL STRUCTURES AND CELL DEATH INDUCING
ACTIVITIES OF CONSTITUENTS ISOLATED FROM *HIBISCUS
TILIACEUS*.**

**Takahiro Kitagawa,^a Takahiro Matsumoto,^{a*} Daisuke Imahori,^a Tetsushi
Watanabe^{a*}**

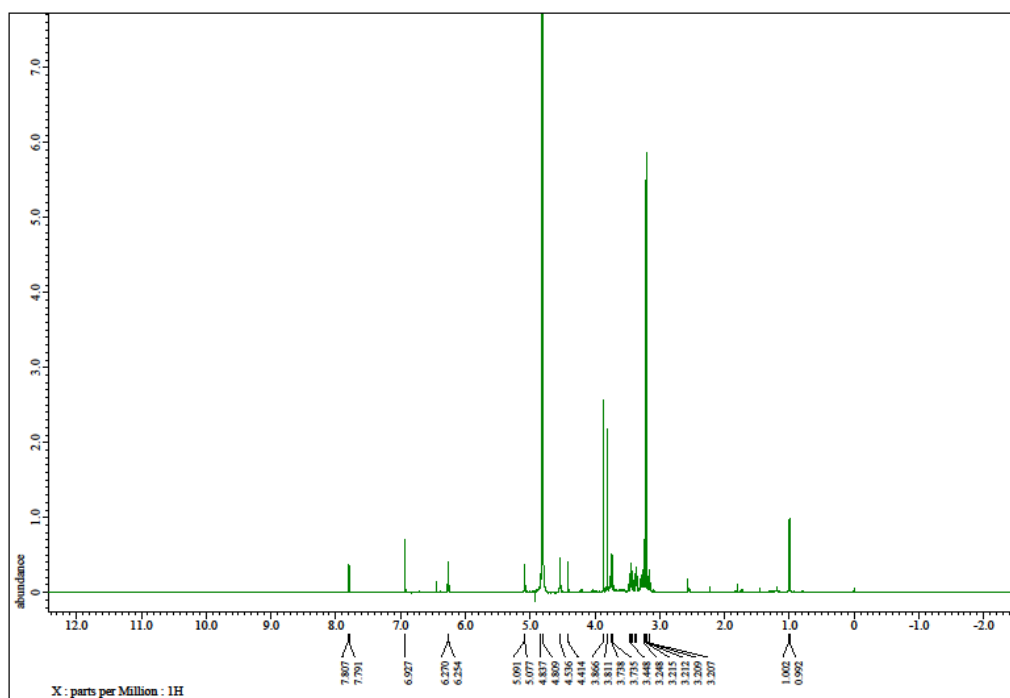
^aDepartment of Public Health, Kyoto Pharmaceutical University, Misasagi,
Yamashina-Ku, Kyoto 607-8412, Japan

E-mail address: tmatsumo@mb.kyoto-phu.ac.jp (T.M.),
watanabe@mb.kyoto-phu.ac.jp (T.W.)

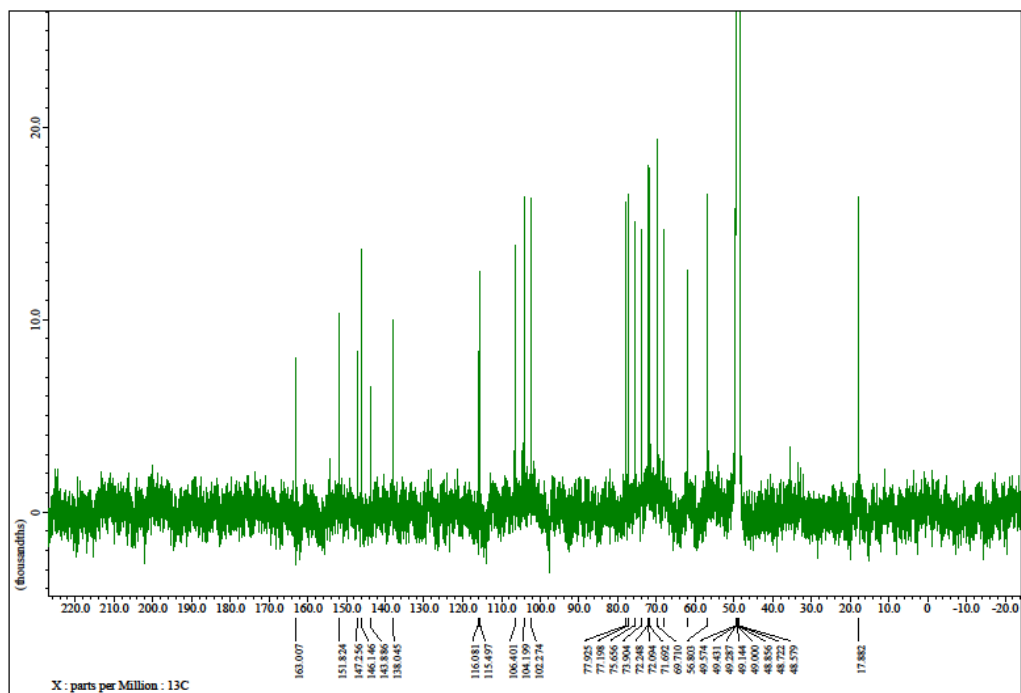
List of Supporting Information

S1. 1D and 2D NMR spectra of hibiscuscoumarin (1).

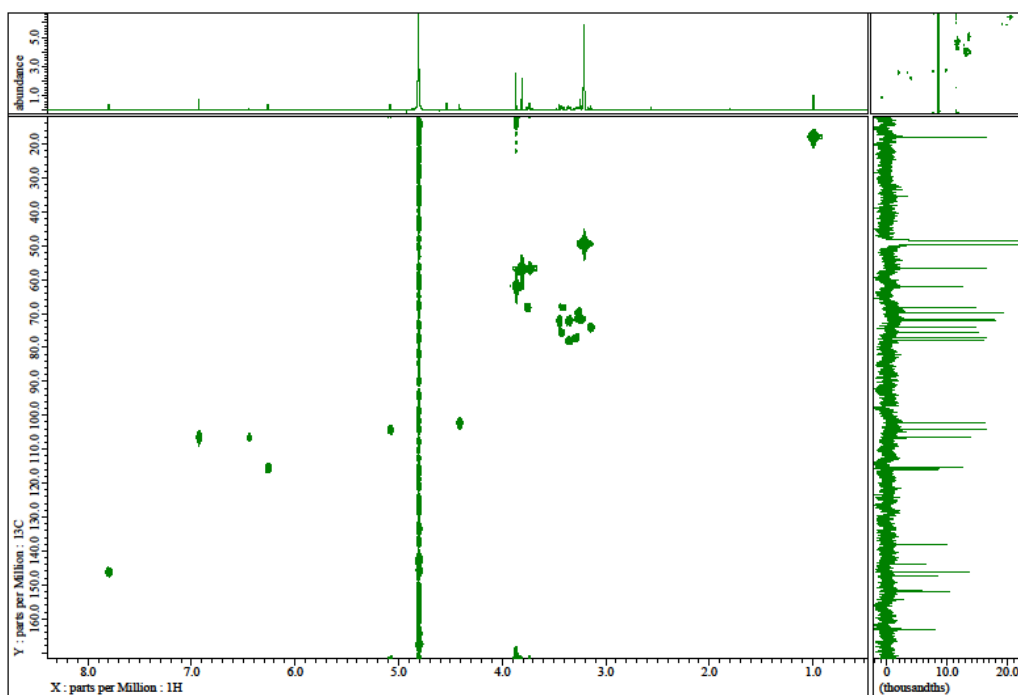
S1. 1D and 2D NMR spectra of hibiscuscoumarin (1)



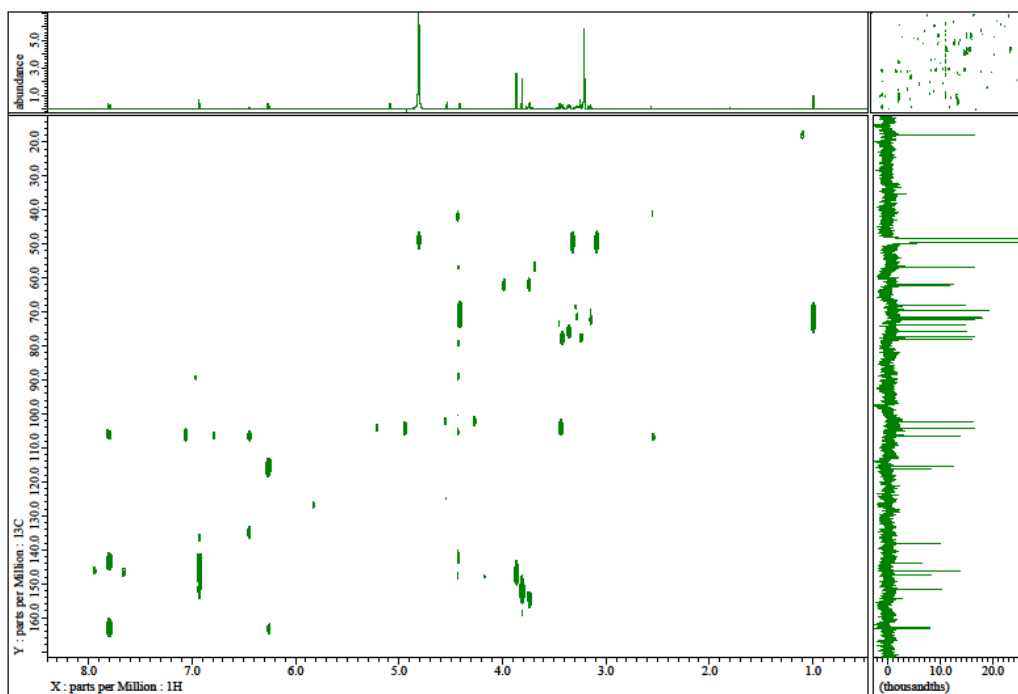
^{13}H -NMR spectrum of 1



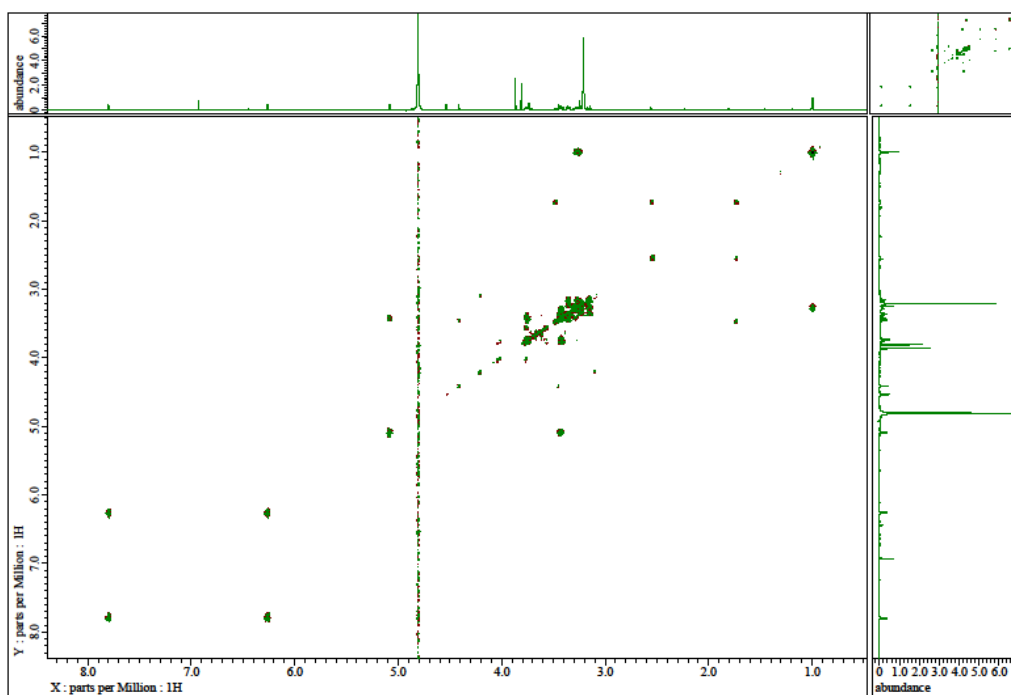
^{13}C -NMR spectrum of 1



HMQC spectrum of 1



HMBC spectrum of 1



DQF COSY spectrum of **1**