

# Supplementary Information

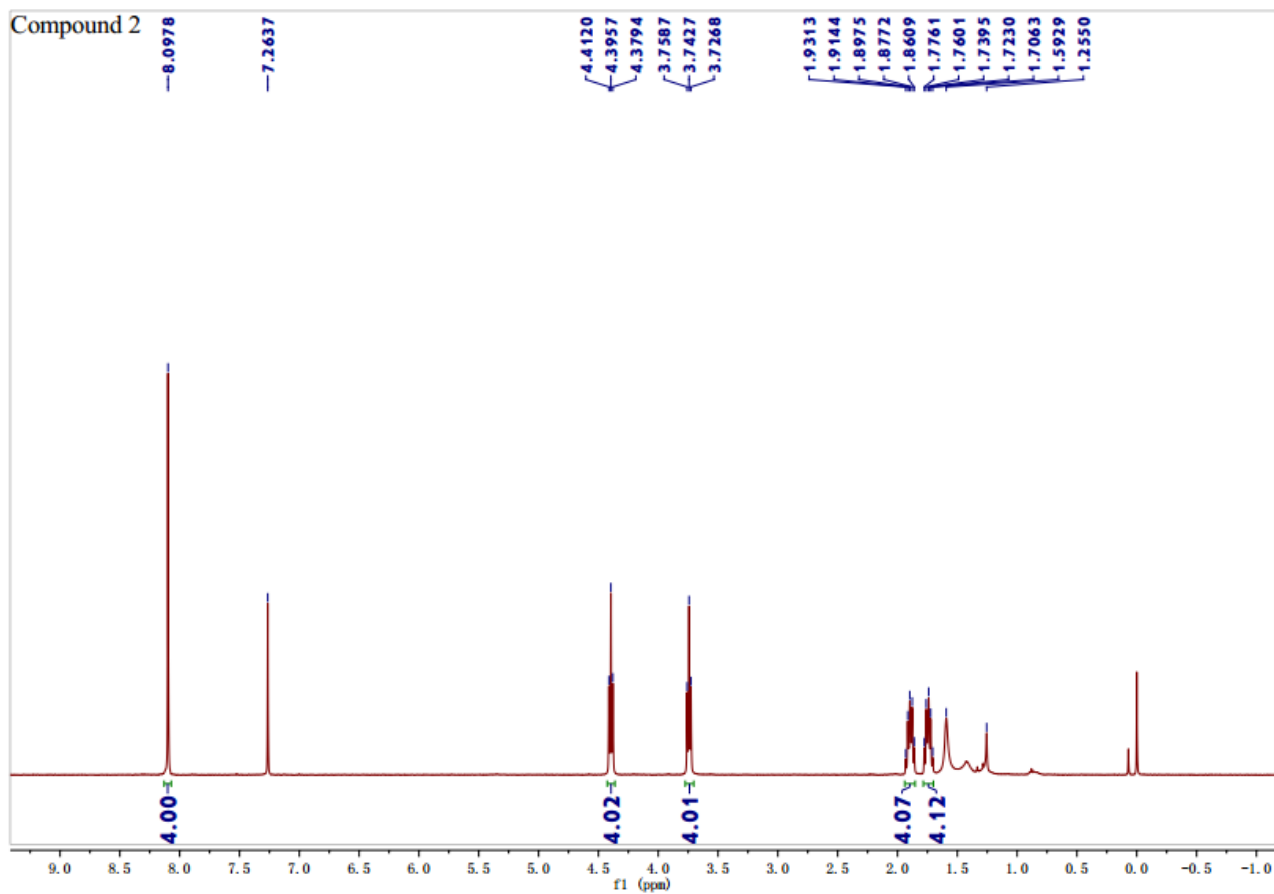
## A PRACTICAL SYNTHESIS OF THE CYCLIC BUTYLENE TEREPHTHALATE TRIMER

Xiaolin Li,<sup>a</sup> Pu Zhou,<sup>a</sup> Wenxuan Wu,<sup>a</sup> Li Zhan,<sup>a</sup> Ting Liu,<sup>a</sup> Fan Yang,<sup>a</sup> Jie Tang,<sup>a</sup> Shanbao Yu,<sup>b</sup> Hui Li,<sup>b</sup> Yu Luo,<sup>a,\*</sup>

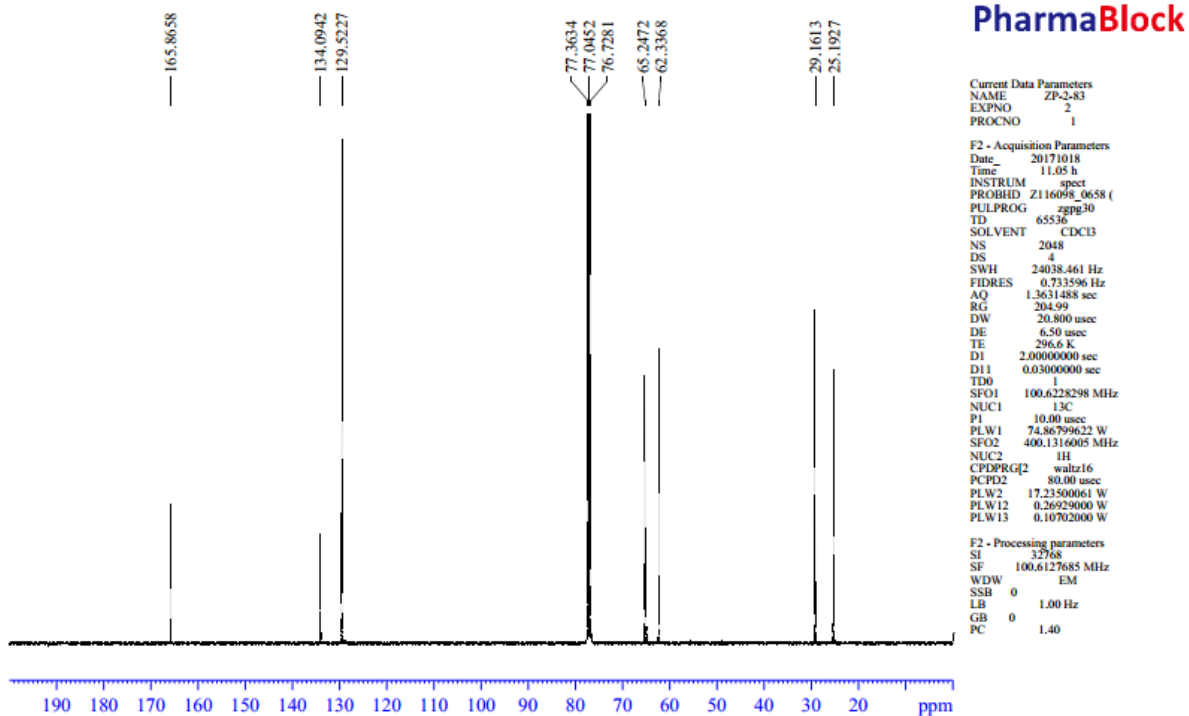
<sup>a</sup> Shanghai Engineering Research Center of Molecular Therapeutics and New Drug Development, School of Chemistry and Molecular Engineering, East China Normal University, Shanghai, 200241, P.R. China

<sup>b</sup>PharmaBlock Sciences (Nanjing), Inc., Nanjing, 210032, P.R. China

<sup>1</sup>H NMR of compound 2

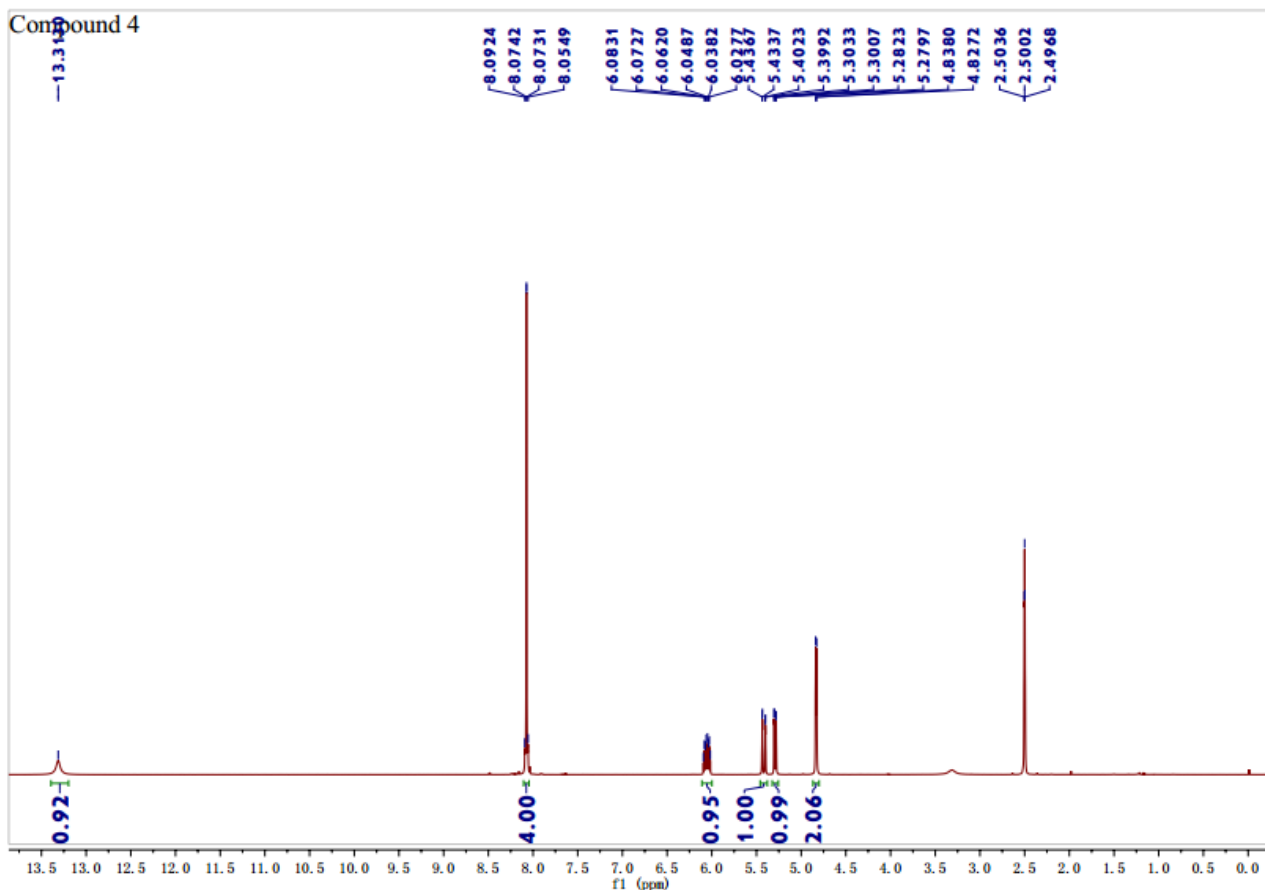


# <sup>13</sup>C NMR of compound 2

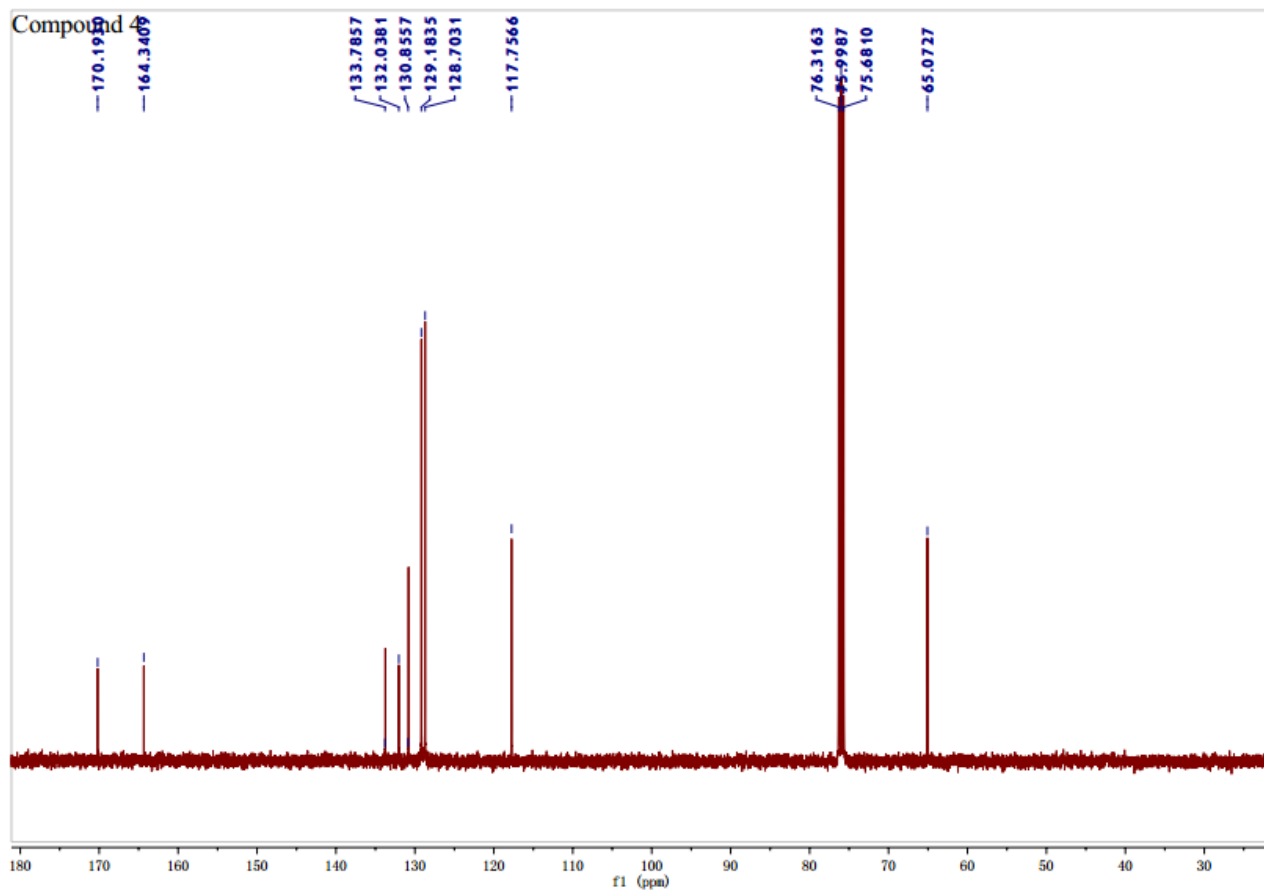


Confidential

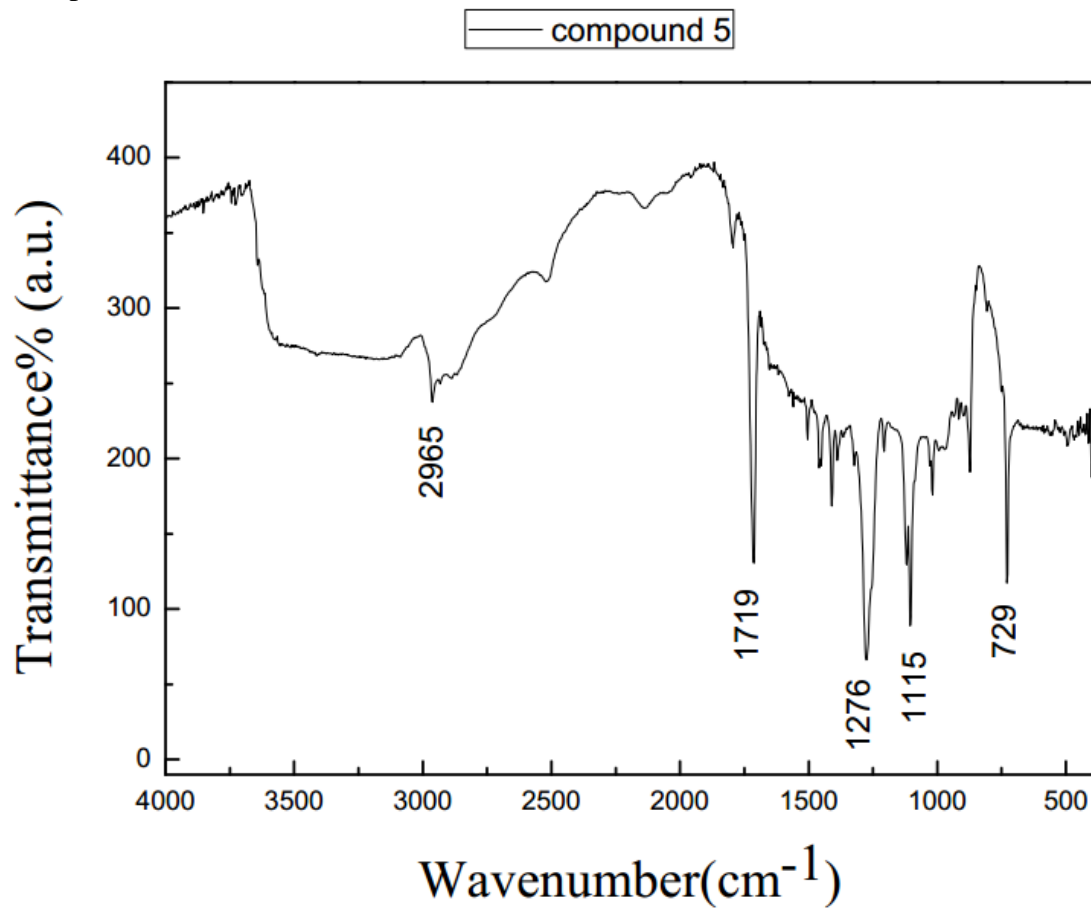
# <sup>1</sup>H NMR of compound 4



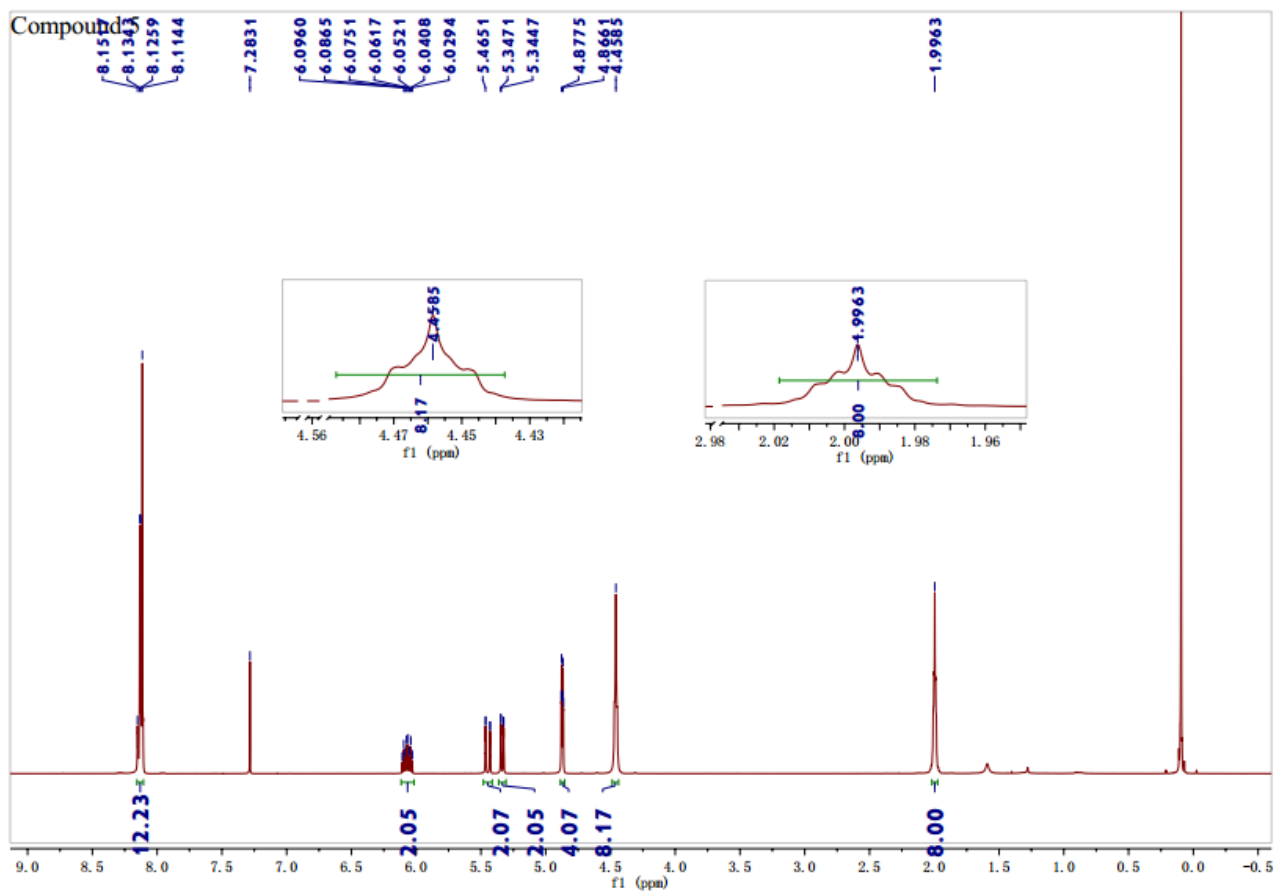
$^{13}\text{C}$  NMR of compound 4



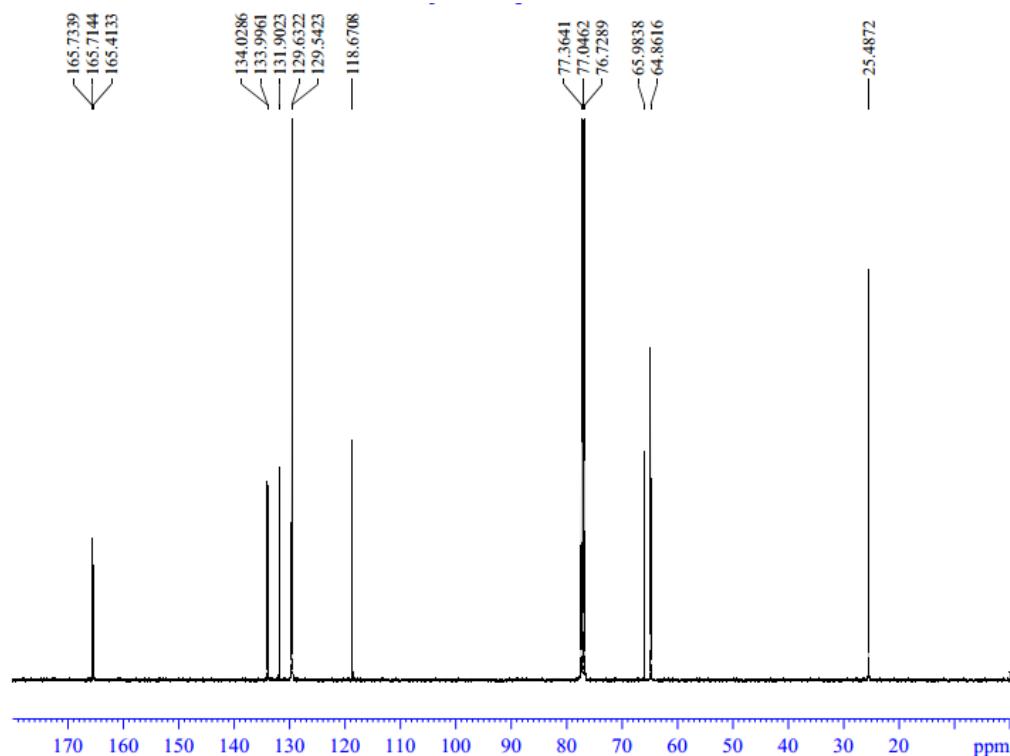
IR of compound 5



<sup>1</sup>H NMR of compound 5



<sup>13</sup>C NMR of compound 5



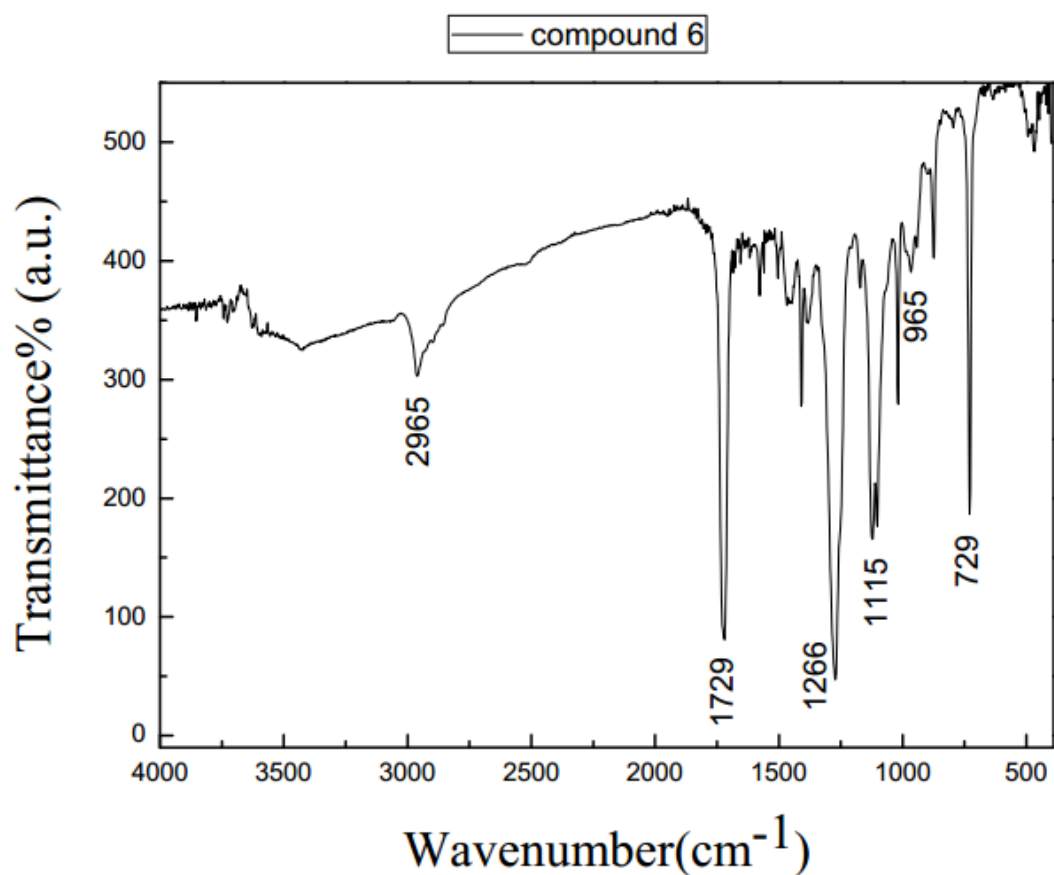
PharmaBlock

Current Data Parameters  
 NAME LXL-1-19  
 EXPNO 2  
 PROCNO 1

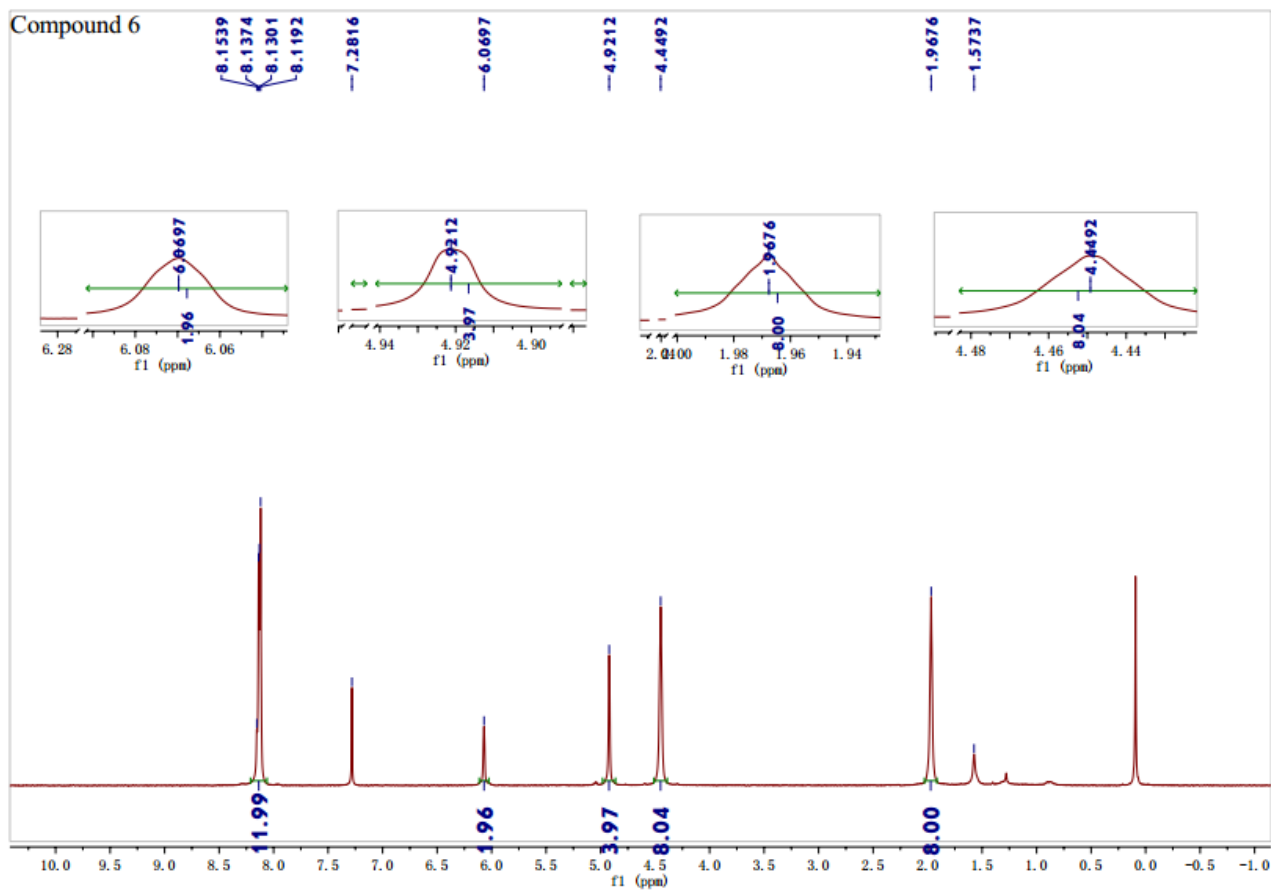
F2 - Acquisition Parameters  
 Date\_ 20171209  
 Time 3.39 h  
 INSTRUM spect  
 PROBHD Z116098\_0658 ( )  
 PULPROG zgpg30  
 TD 65536  
 SOLVENT CDCl3  
 NS 2048  
 DS 4  
 SWH 24038.461 Hz  
 FIDRES 0.733596 Hz  
 AQ 1.3631488 sec  
 RG 204.99  
 DW 20.800 usec  
 DE 6.50 usec  
 TE 297.5 K  
 D1 2.00000000 sec  
 D11 0.03000000 sec  
 TD0 1  
 SFO1 100.6228298 MHz  
 NUC1 13C  
 P1 10.00 usec  
 PLW1 74.86799622 W  
 SFO2 400.1316005 MHz  
 NUC2 1H  
 CPDPRG2 waltz16  
 PCPD2 80.00 usec  
 PLW2 17.23500061 W  
 PLW12 0.26929000 W  
 PLW13 0.10702000 W

F2 - Processing parameters  
 SI 32768  
 SF 100.6127685 MHz  
 WDW EM  
 SSB 0  
 LB 1.00 Hz  
 GB 0  
 PC 1.40

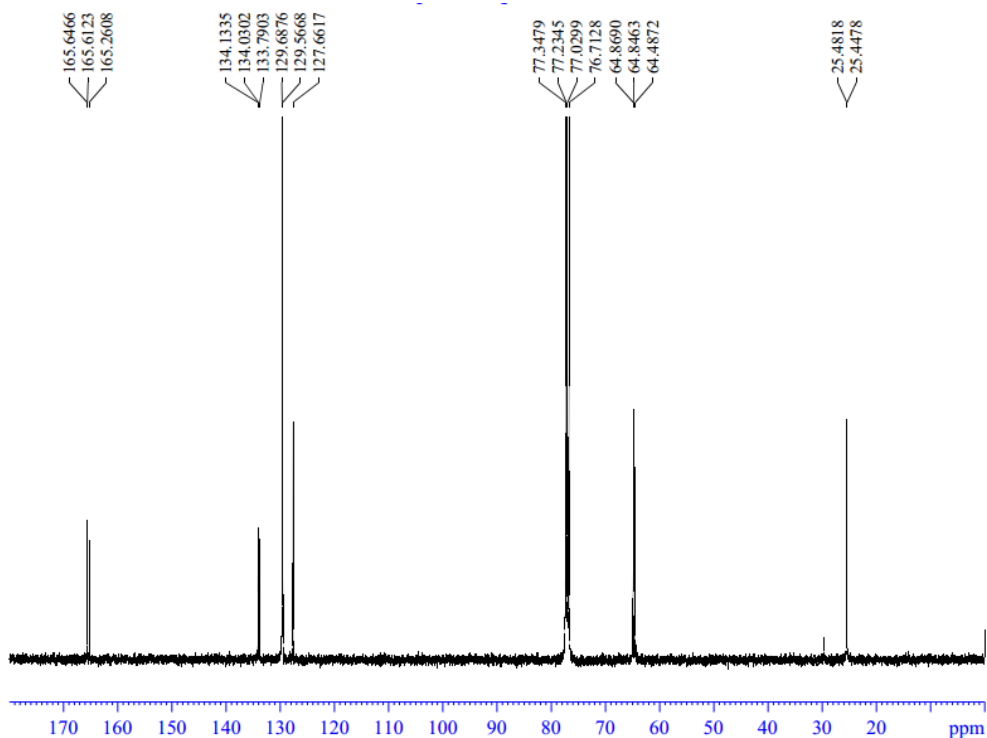
IR of compound 6



<sup>1</sup>H NMR of compound 6



### <sup>13</sup>C NMR of compound 6



PharmaBlock

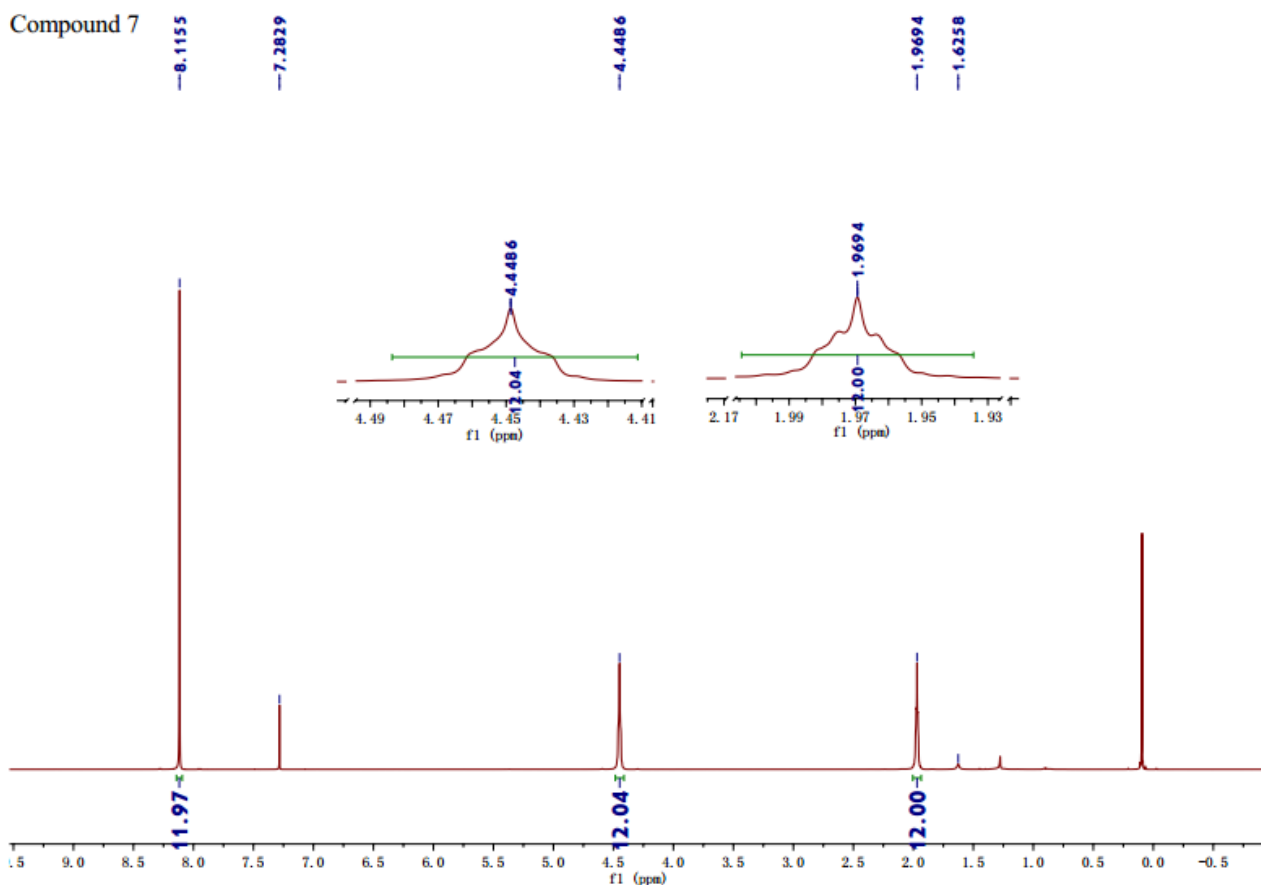
Current Data Parameters  
 NAME LXL-1-29  
 EXPNO 2  
 PROCNO 1

F2 - Acquisition Parameters  
 Date\_ 20171209  
 Time 5:50 h  
 INSTRUM spect  
 PROBHD Z116098\_0658 ( )  
 PULPROG zgpg30  
 TD 65536  
 SOLVENT CDCl3  
 NS 2048  
 DS 4  
 SWH 24038.461 Hz  
 FIDRES 0.733596 Hz  
 AQ 1.3631488 sec  
 RG 204.99  
 DW 20.800 usec  
 DE 6.50 usec  
 TE 297.7 K  
 DI 2.00000000 sec  
 D11 0.03000000 sec  
 TD0 1  
 SFO1 100.6228298 MHz  
 NUC1 13C  
 P1 10.00 usec  
 PLW1 74.86799622 W  
 SFO2 400.1316005 MHz  
 NUC2 1H  
 CPDPRG2 waltz16  
 PCPD2 80.00 usec  
 PLW2 17.23500061 W  
 PLW12 0.26929000 W  
 PLW13 0.10702000 W

F2 - Processing parameters  
 SI 32768  
 SF 100.6127685 MHz  
 WDW EM  
 SSB 0  
 LB 1.00 Hz  
 GB 0  
 PC 1.40

### <sup>1</sup>H NMR of compound 7

Compound 7



$^{13}\text{C}$  NMR of compound 7

