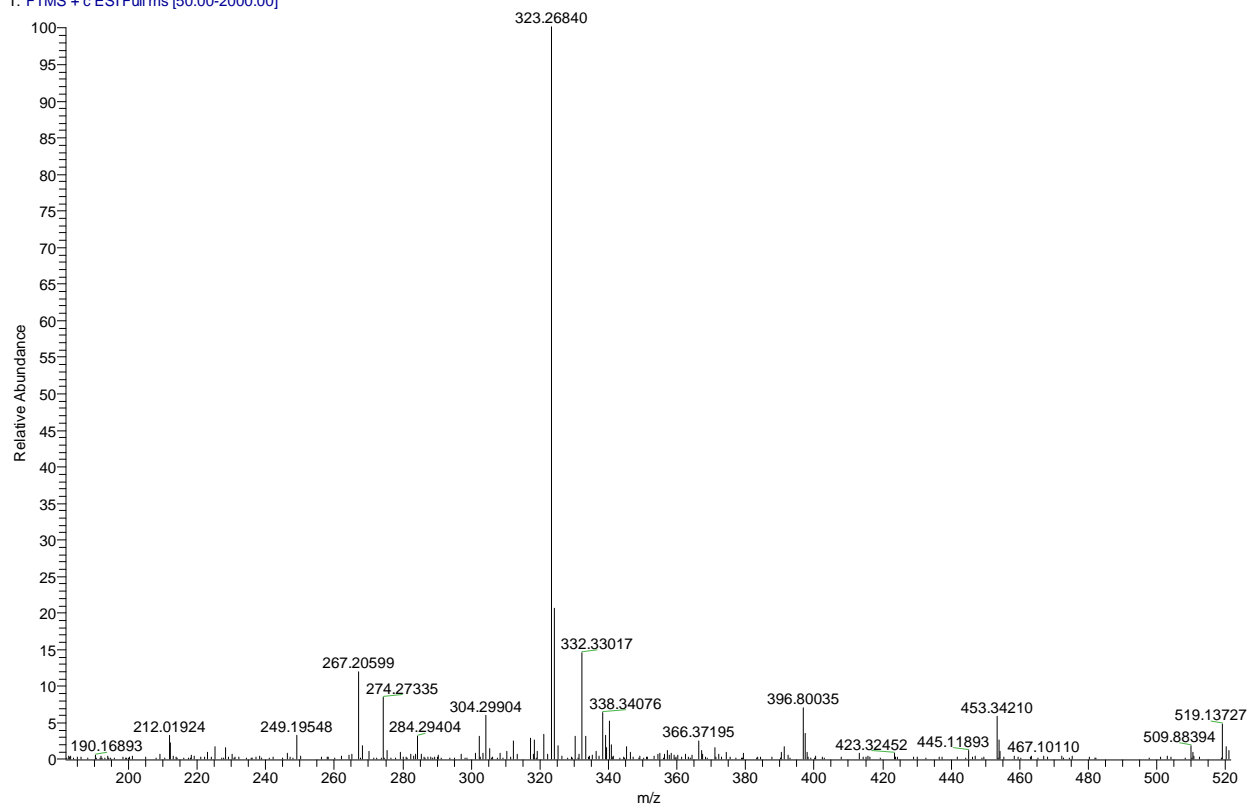


DNS #42 RT: 0.36 AV: 1 NL: 6.15E7
T: FTMS + c ESI Full ms [50.00-2000.00]



DNS #42 RT: 0.36 AV: 1 NL: 6.15E7
T: FTMS + c ESI Full ms [50.00-2000.00]

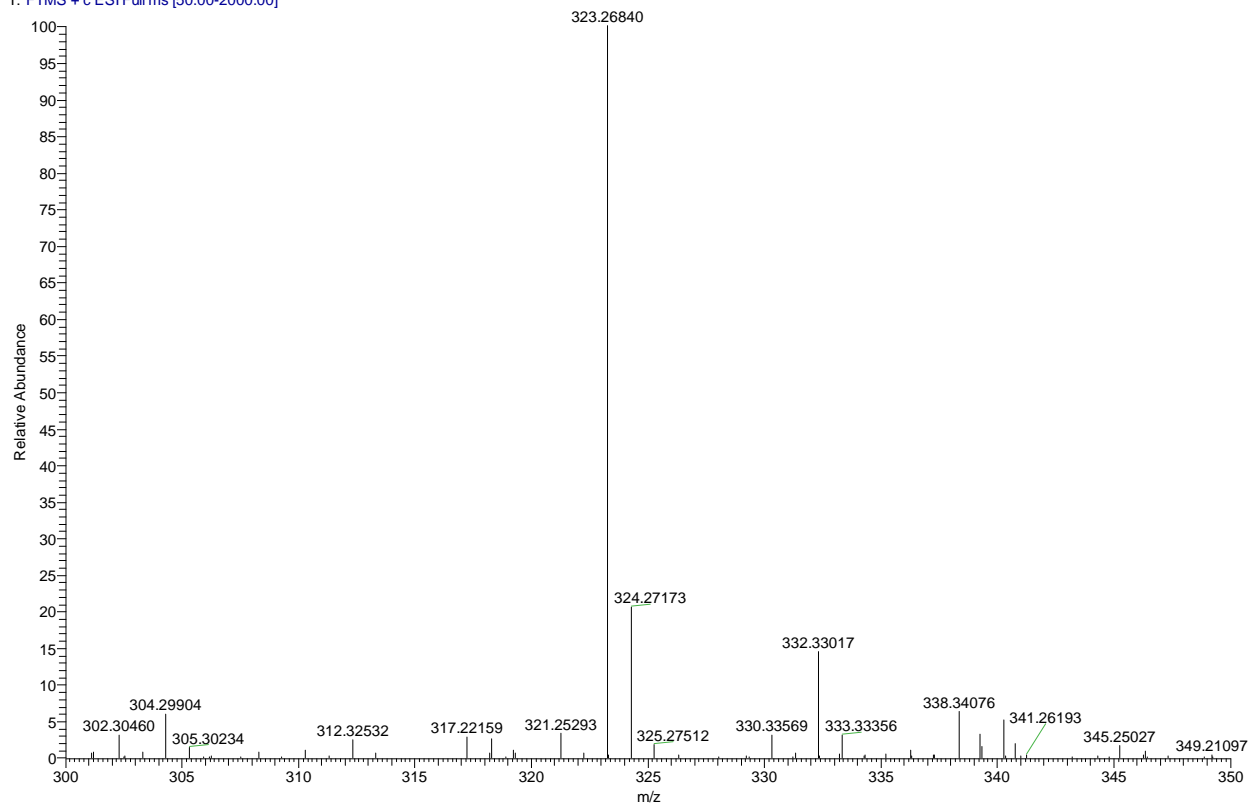
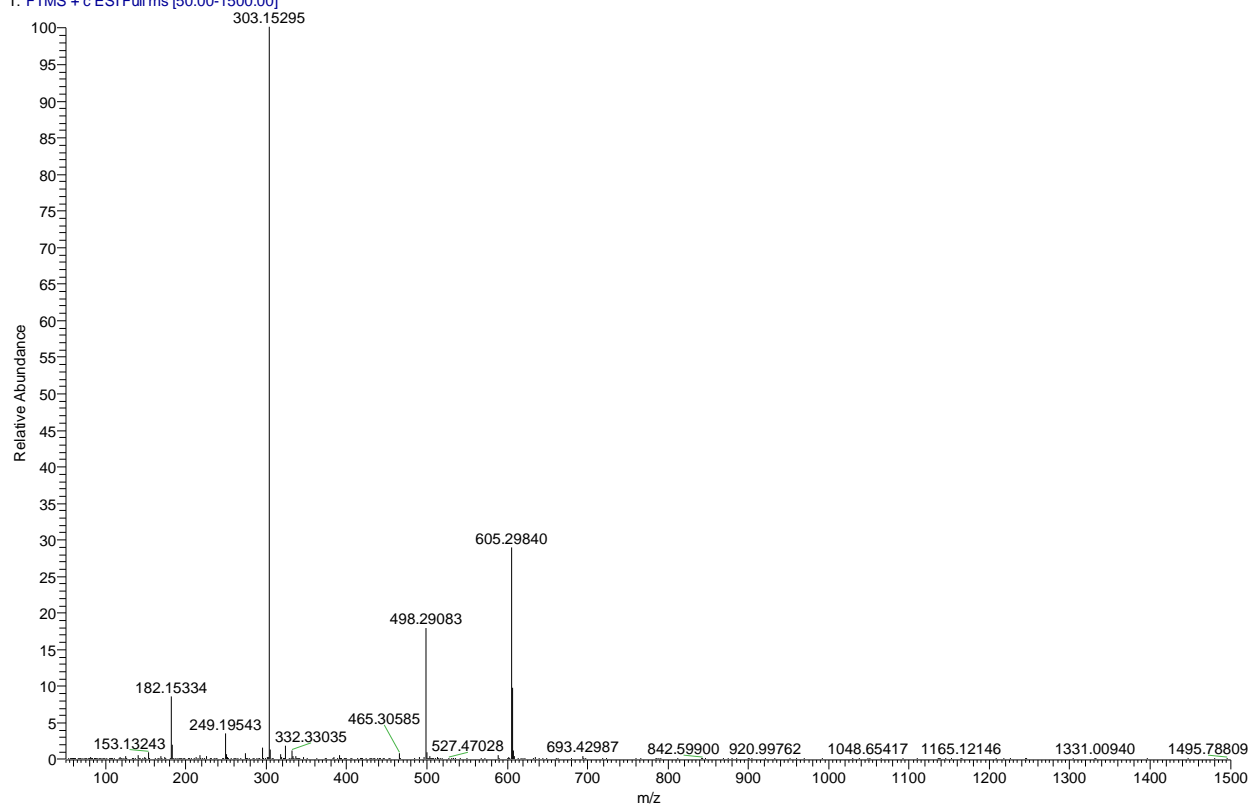


Fig.1. MS of compound 4

M2 #47 RT: 0.39 AV: 1 NL: 9.58E8
T: FTMS + c ESI Full ms [50.00-1500.00]



M2 #47 RT: 0.39 AV: 1 NL: 2.76E8
T: FTMS + c ESI Full ms [50.00-1500.00]

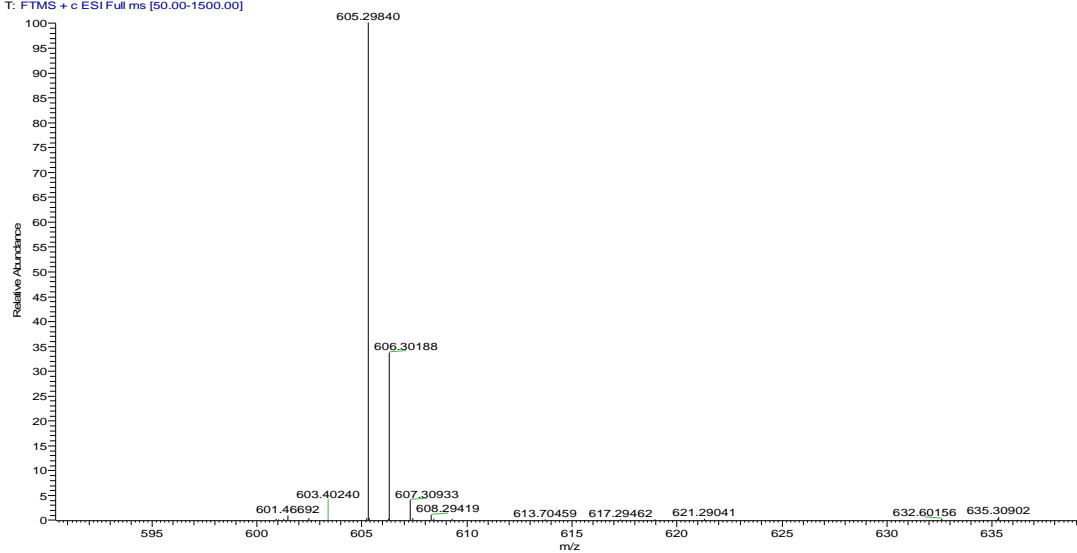
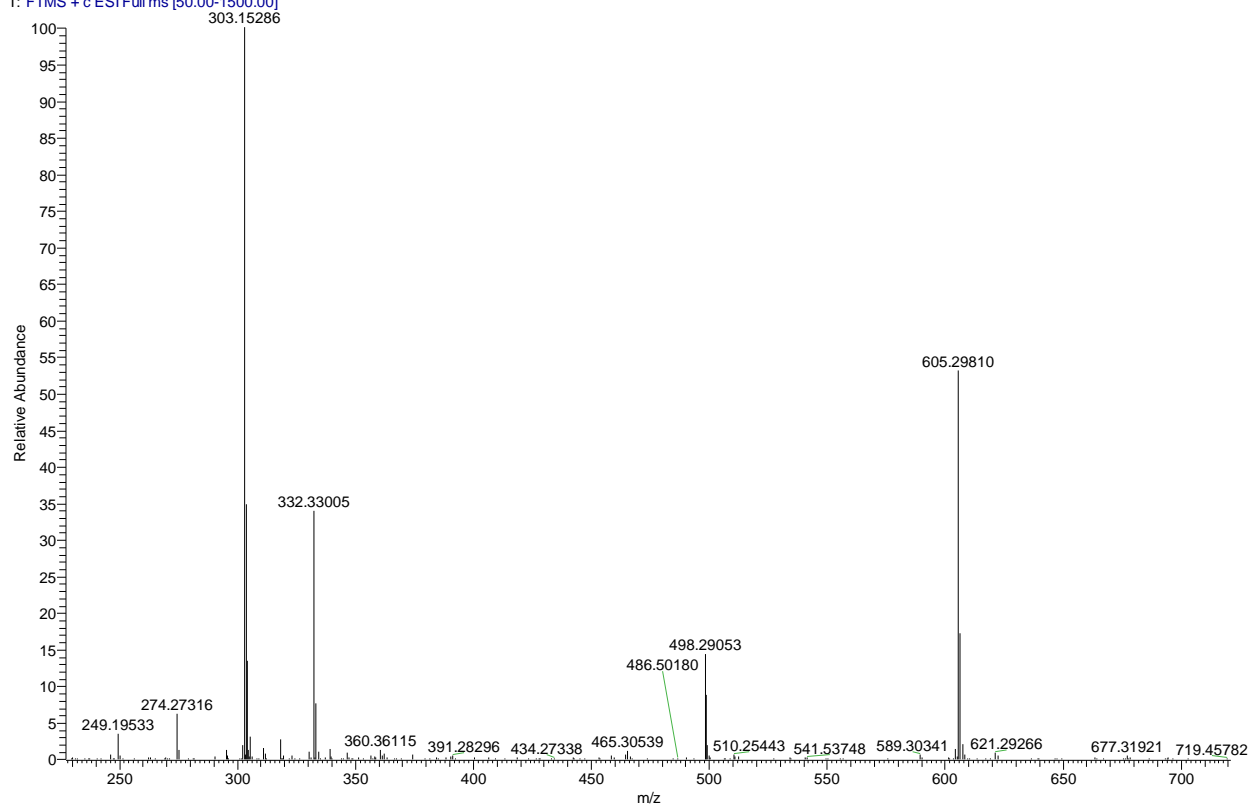


Fig.2. MS of compound **9b**

M5 #45 RT: 0.39 AV: 1 NL: 5.86E8
T: FTMS + c ESI Full ms [50.00-1500.00]



M5 #45 RT: 0.39 AV: 1 NL: 3.11E8
T: FTMS + c ESI Full ms [50.00-1500.00]

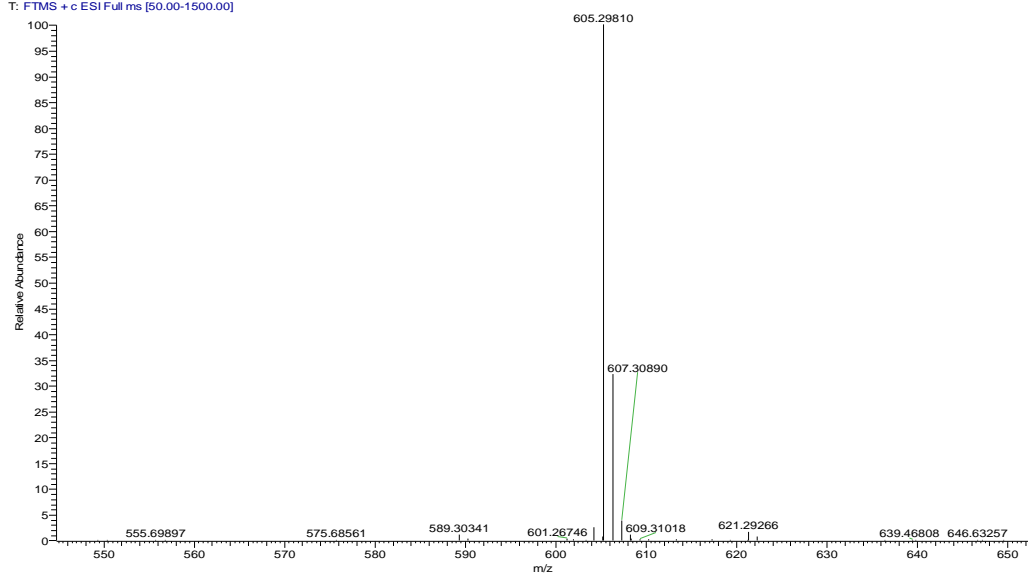


Fig.3. MS of compound 9c

w1 #32 RT: 0.40 AV: 1 NL: 5.09E8
T: FTMS + c ESI Full ms [50.00-2000.00]

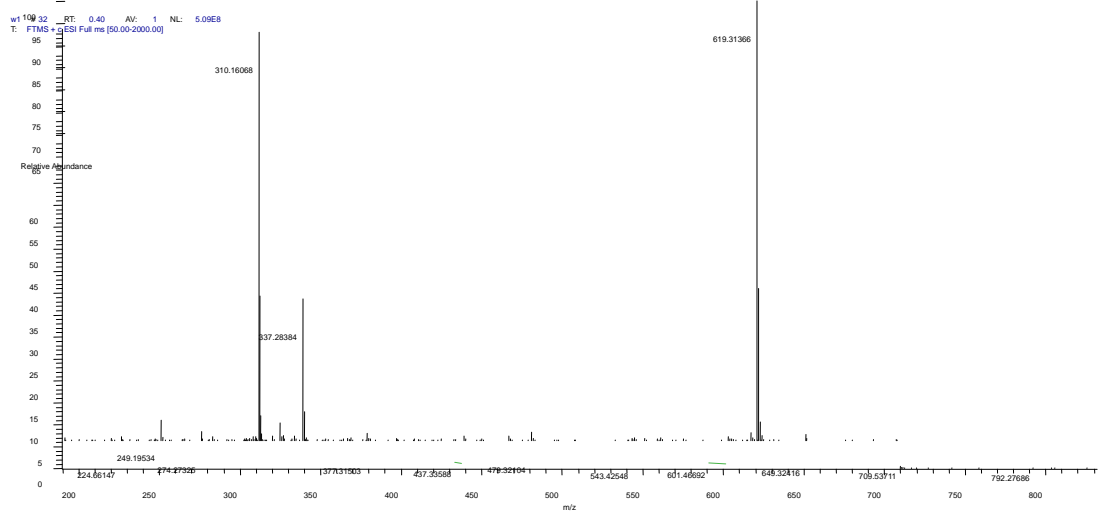
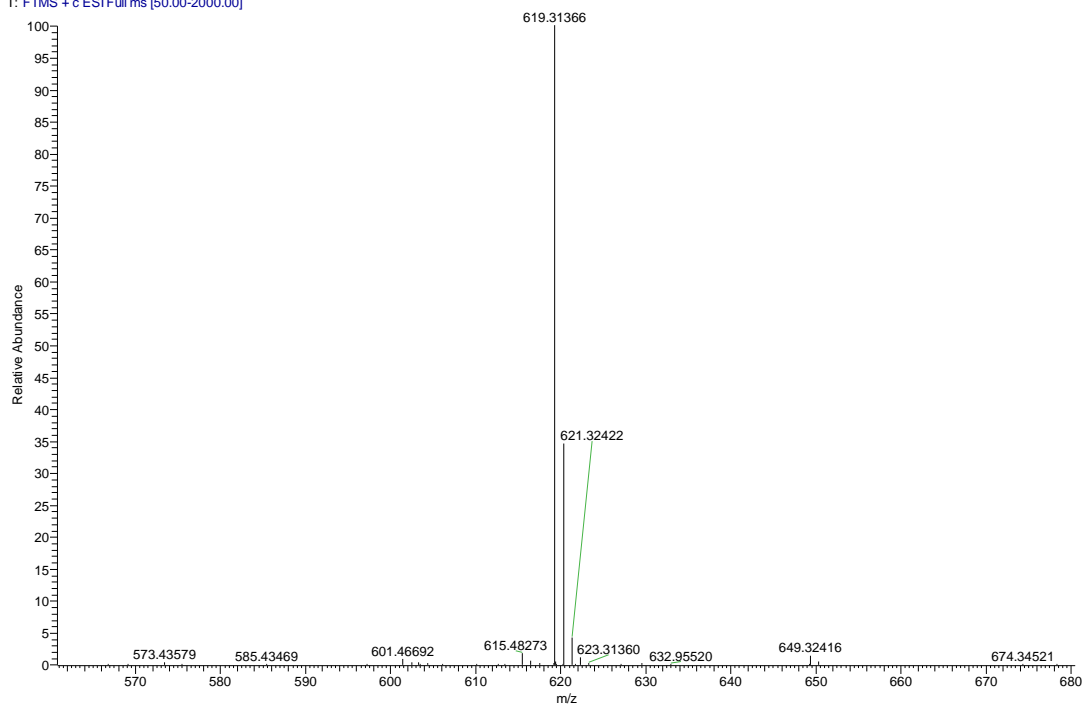
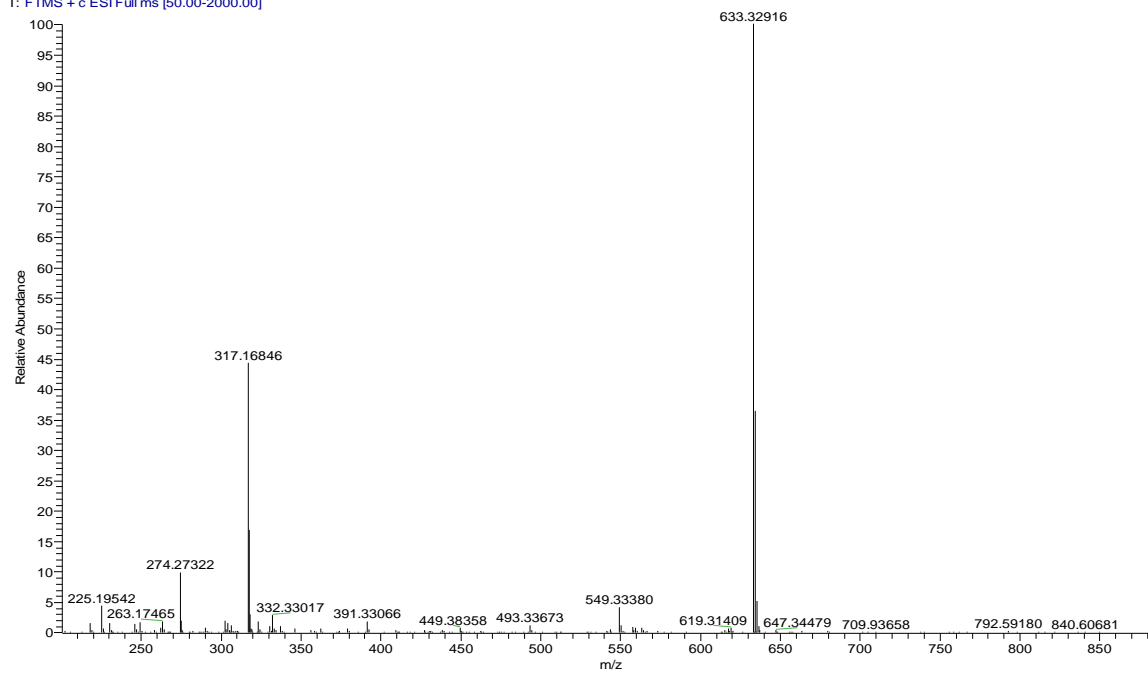


Fig.4. MS of compound 9d

w2 #28 RT: 0.37 AV: 1 NL: 5.78E8
T: FTMS + c ESI Full ms [50.00-2000.00]



w2 #28 RT: 0.37 AV: 1 NL: 5.78E8
T: FTMS + c ESI Full ms [50.00-2000.00]

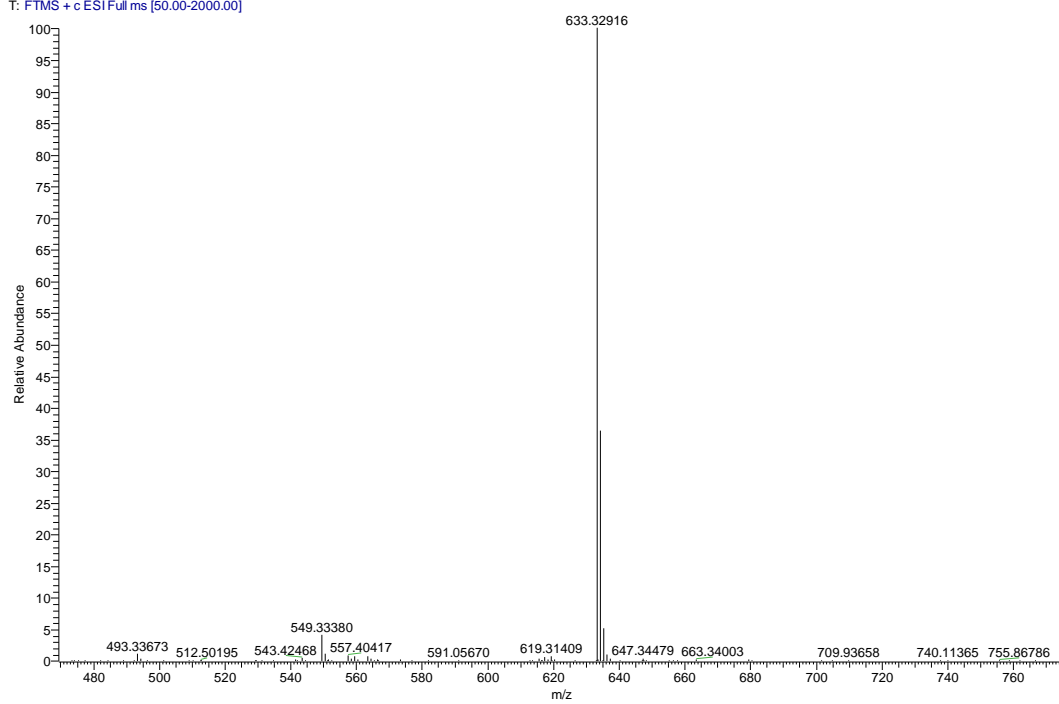
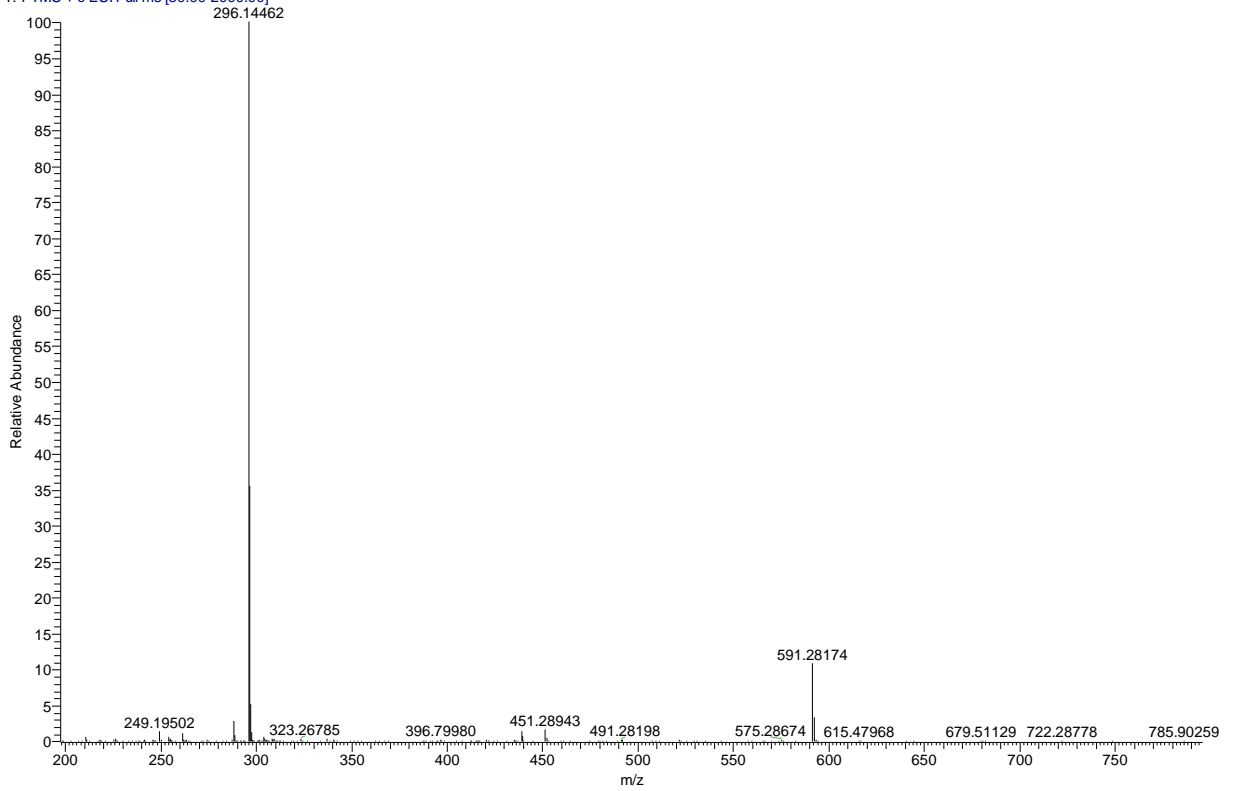
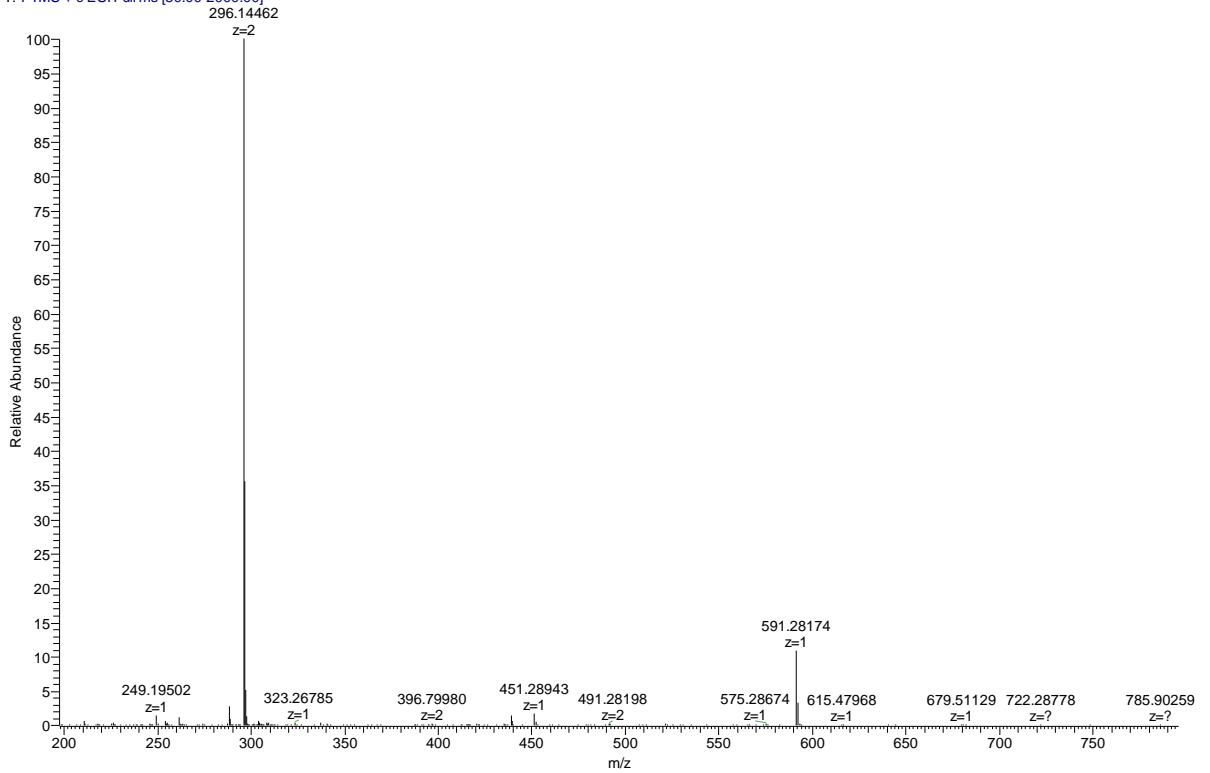


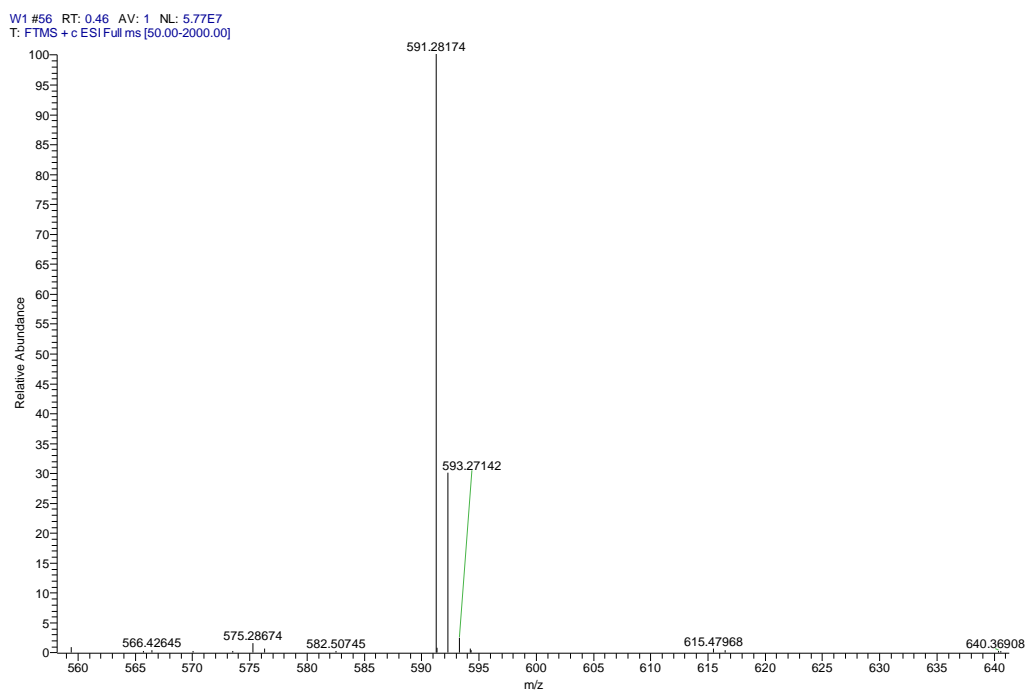
Fig.5. MS of compound 9e

W1 #56 RT: 0.46 AV: 1 NL: 5.34E8
T: FTMS + c ESI Full ms [50.00-2000.00]



W1 #56 RT: 0.46 AV: 1 NL: 5.34E8
T: FTMS + c ESI Full ms [50.00-2000.00]

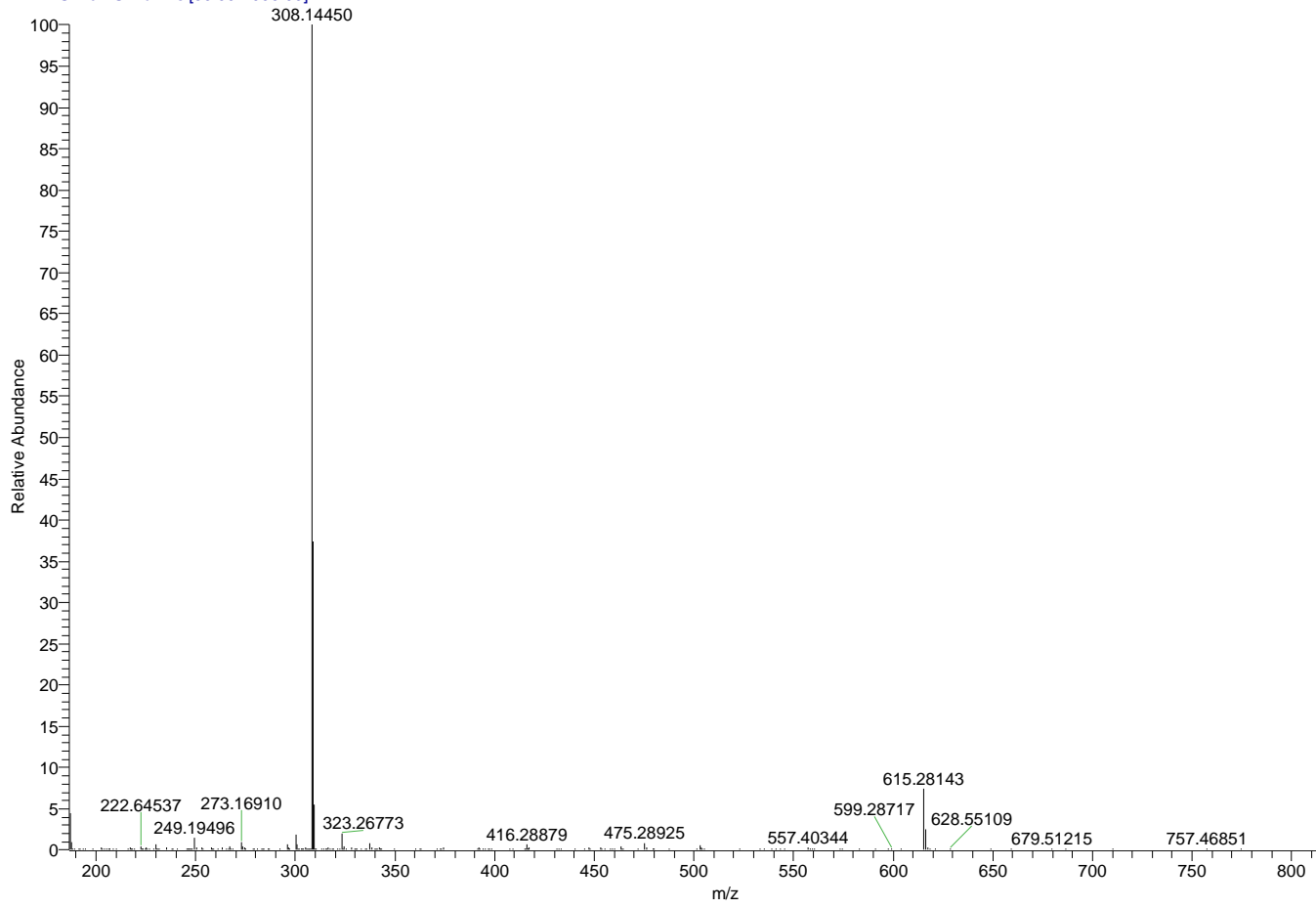




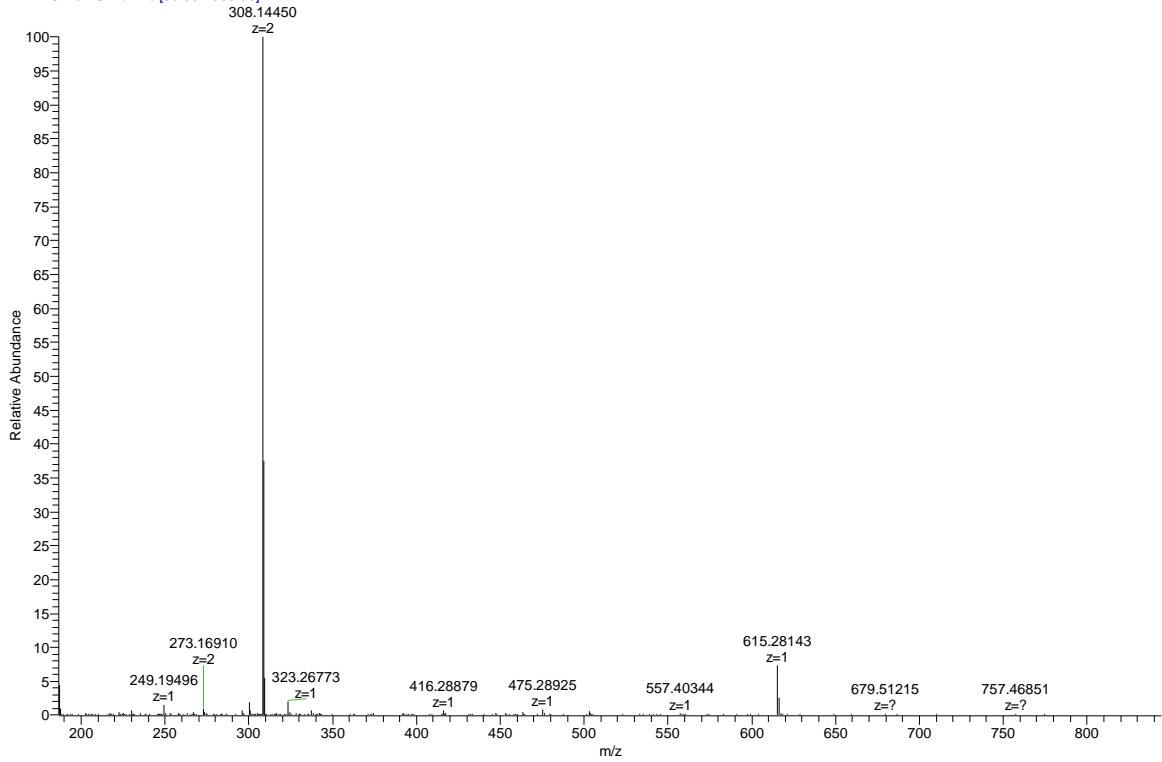
1. 1,2-乙二醇咪唑 NDS M=590

Fig.5. MS of compound **9a**

W2 #52 RT: 0.44 AV: 1 NL: 4.61E8
T: FTMS + c ESI Full ms [50.00-2000.00]



W2 #52 RT: 0.44 AV: 1 NL: 4.61E8
T: FTMS + c ESI Full ms [50.00-2000.00]



W2 #52 RT: 0.44 AV: 1 NL: 3.36E7
T: FTMS + c.ESI Full ms [50.00-2000.00]

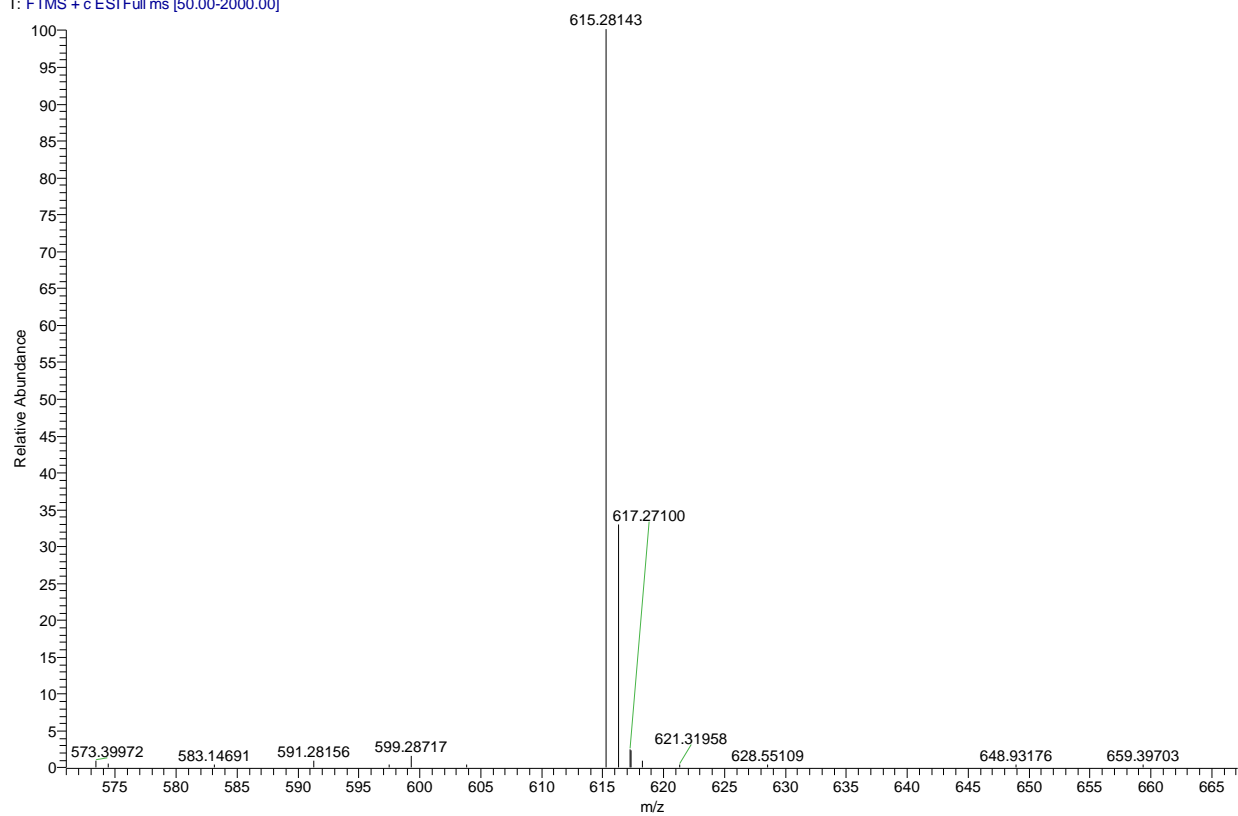
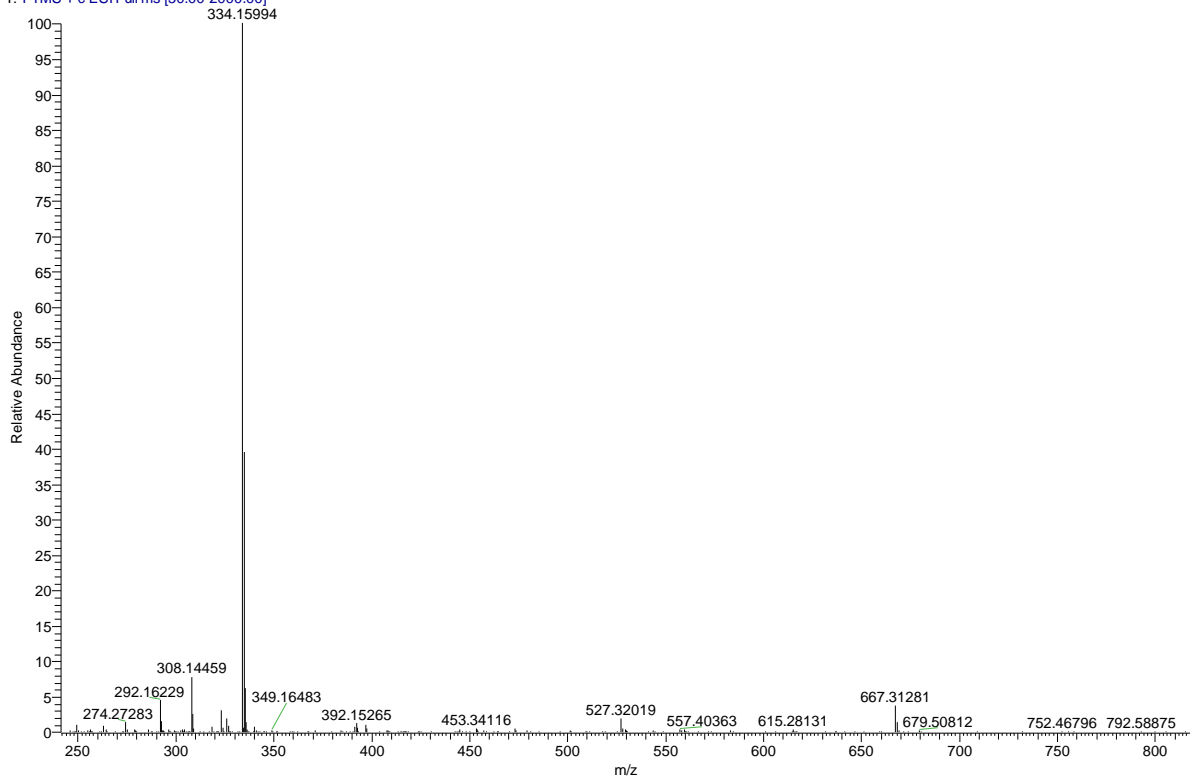
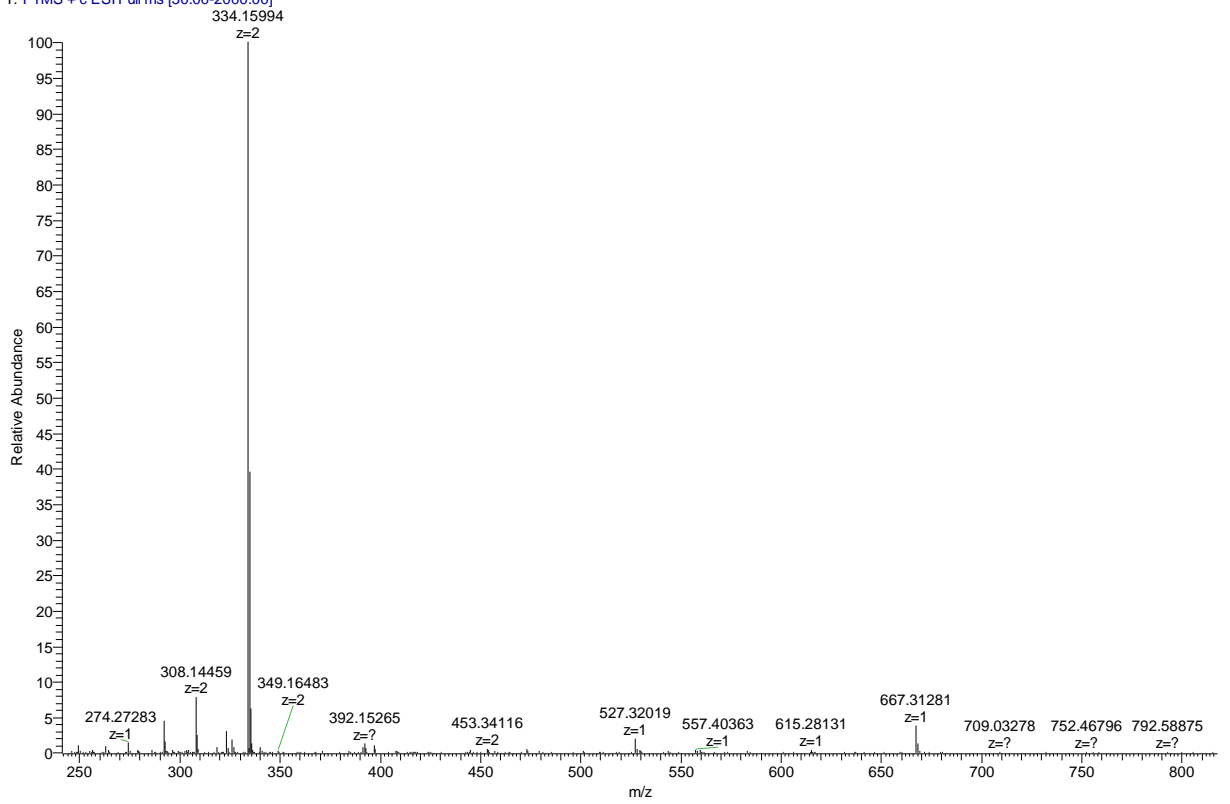


Fig.6. MS of compound 9h

W3 #55 RT: 0.47 AV: 1 NL: 1.03E8
T: FTMS + c ESI Full ms [50.00-2000.00]



W3 #55 RT: 0.47 AV: 1 NL: 1.03E8
T: FTMS + c ESI Full ms [50.00-2000.00]



W3 #55 RT: 0.47 AV: 1 NL: 3.83E6
T: FTMS + c ESI Full ms [50.00-2000.00]

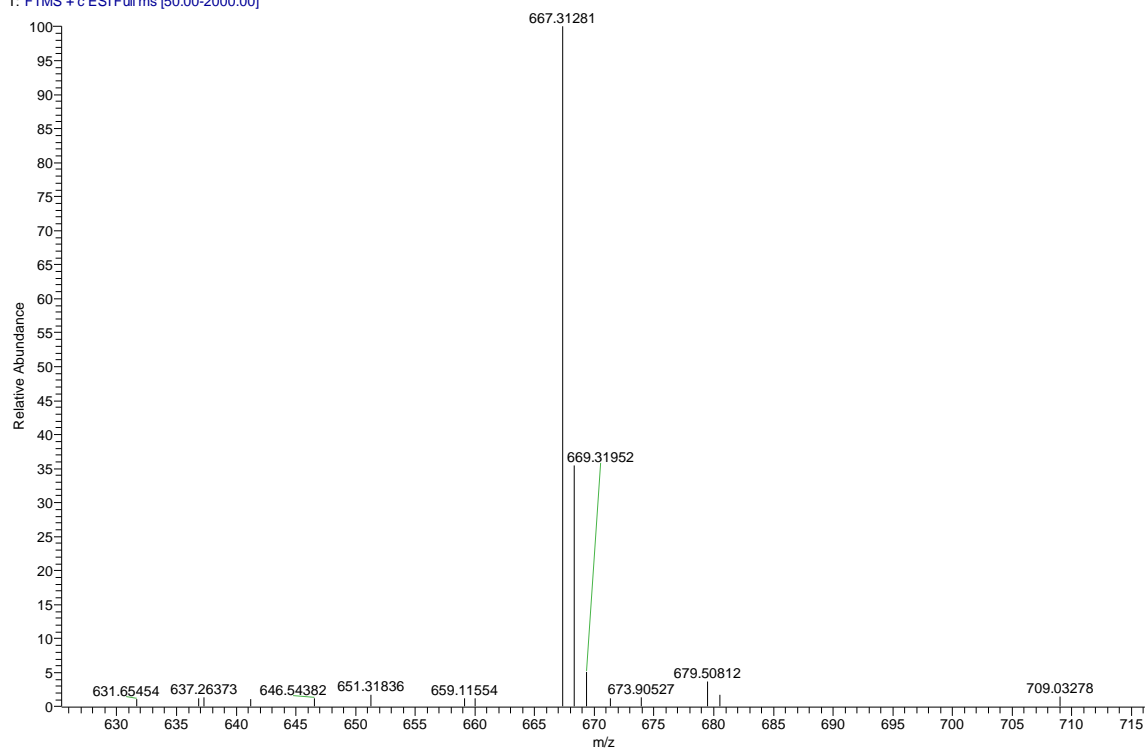
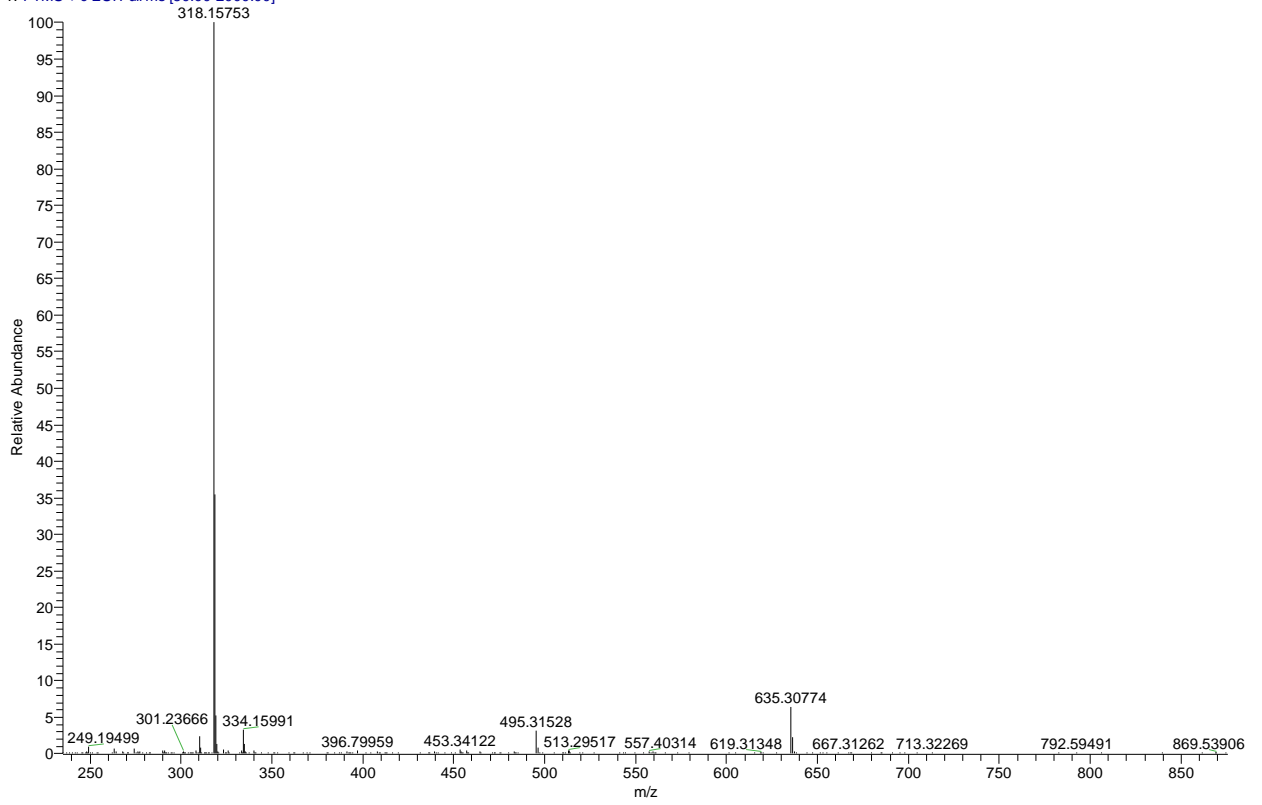
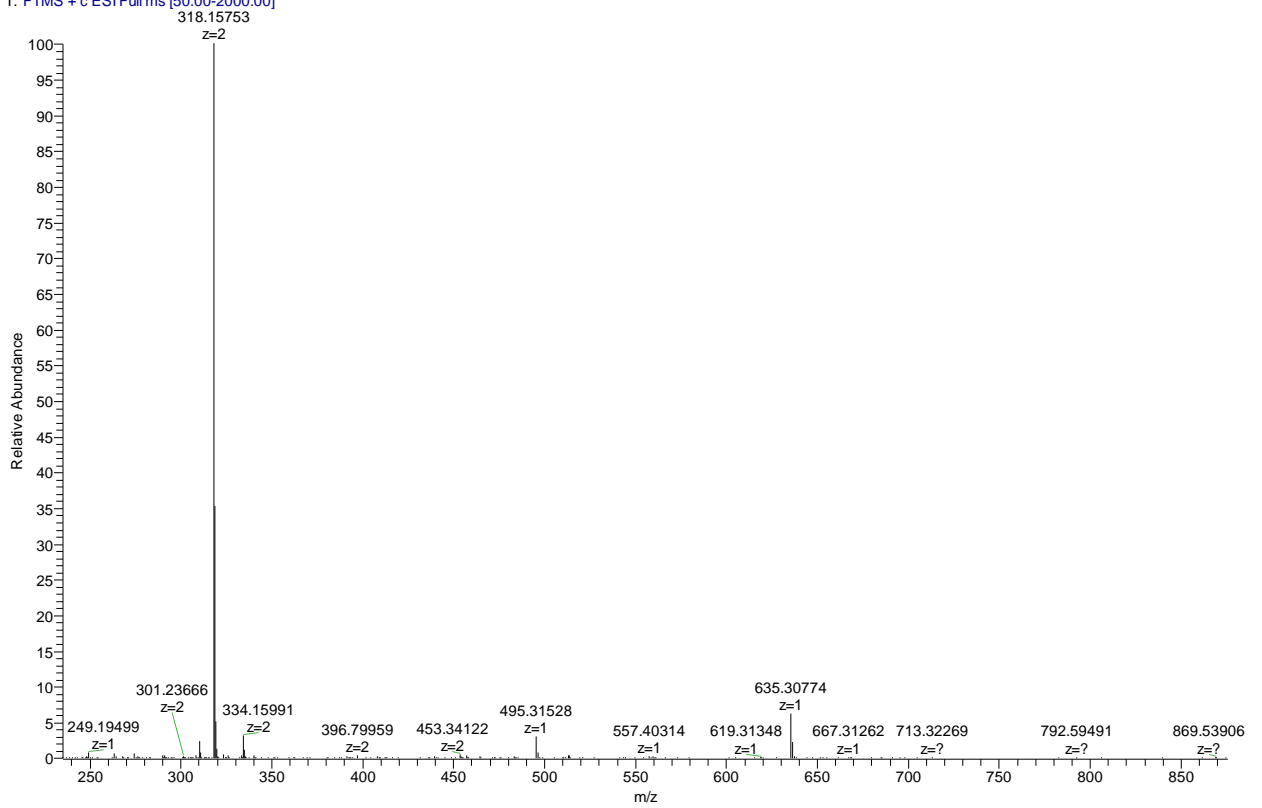


Fig.7. MS of compound 9i

W4 #53 RT: 0.46 AV: 1 NL: 1.89E8
T: FTMS + c ESI Full ms [50.00-2000.00]



W4 #53 RT: 0.46 AV: 1 NL: 1.89E8
T: FTMS + c ESI Full ms [50.00-2000.00]



W4 #53 RT: 0.46 AV: 1 NL: 1.18E7
T: FTMS + c ESI Full ms [50.00-2000.00]

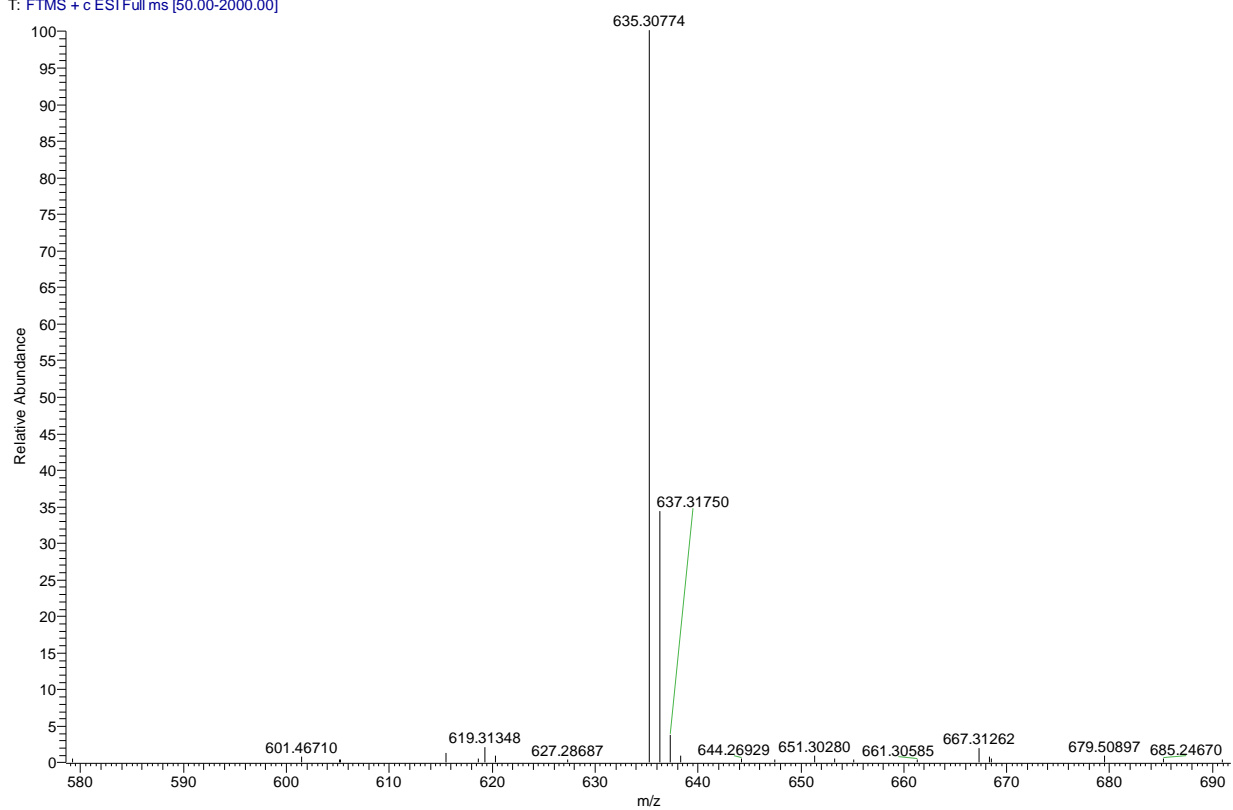
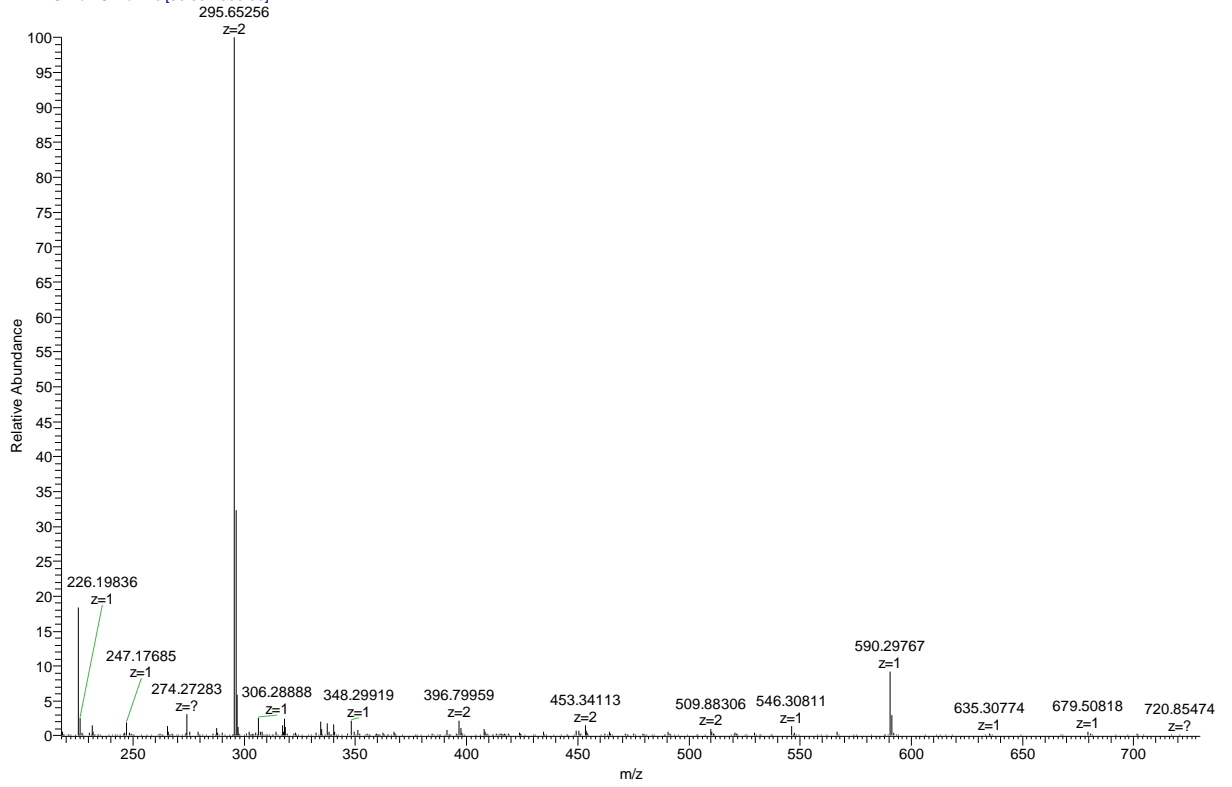


Fig. 7. MS of compound **9g**

W5 #52 RT: 0.45 AV: 1 NL: 8.69E7
T: FTMS + c ESI Full ms [50.00-2000.00]



W5 #52 RT: 0.45 AV: 1 NL: 7.95E6
T: FTMS + c ESI Full ms [50.00-2000.00]

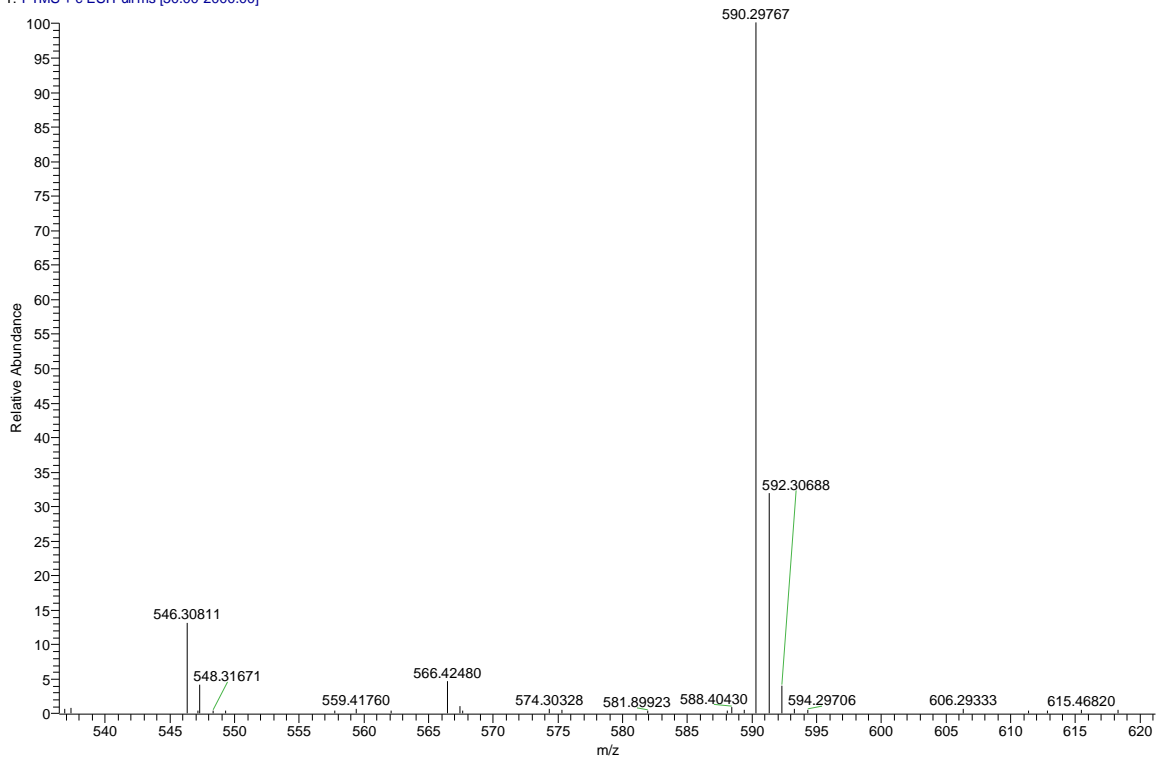
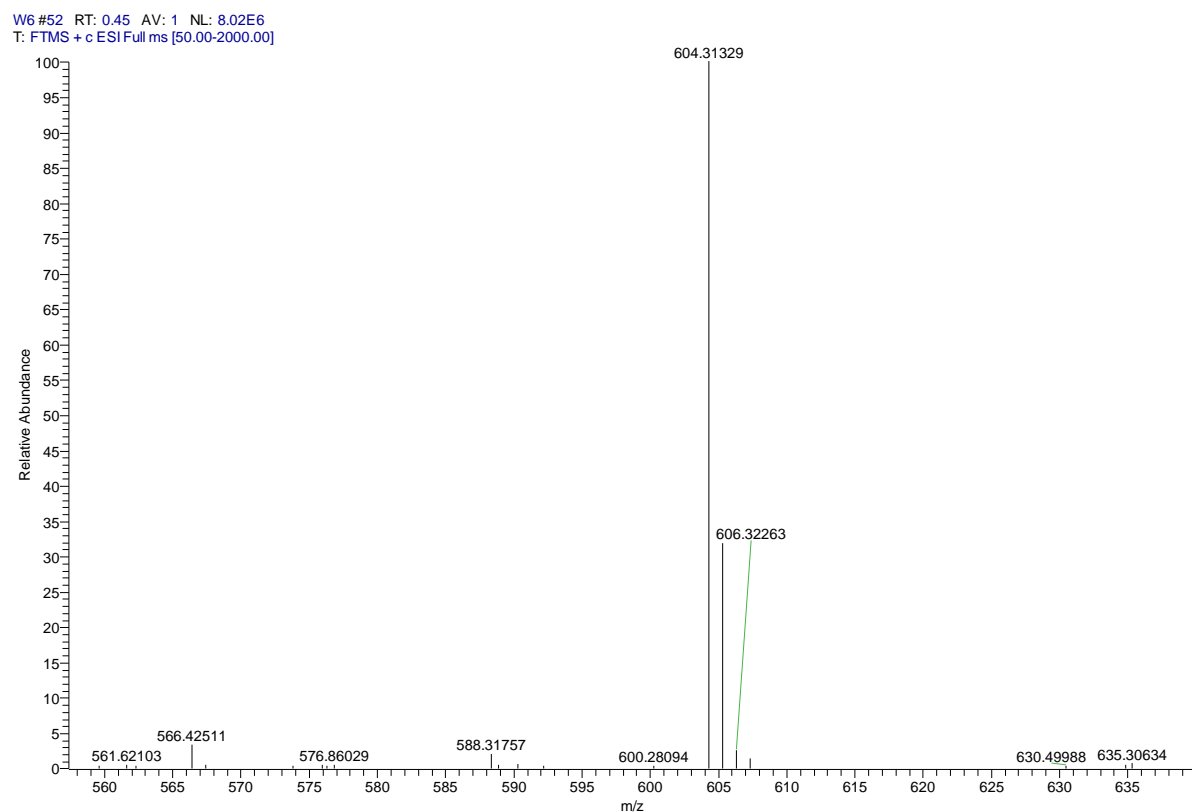
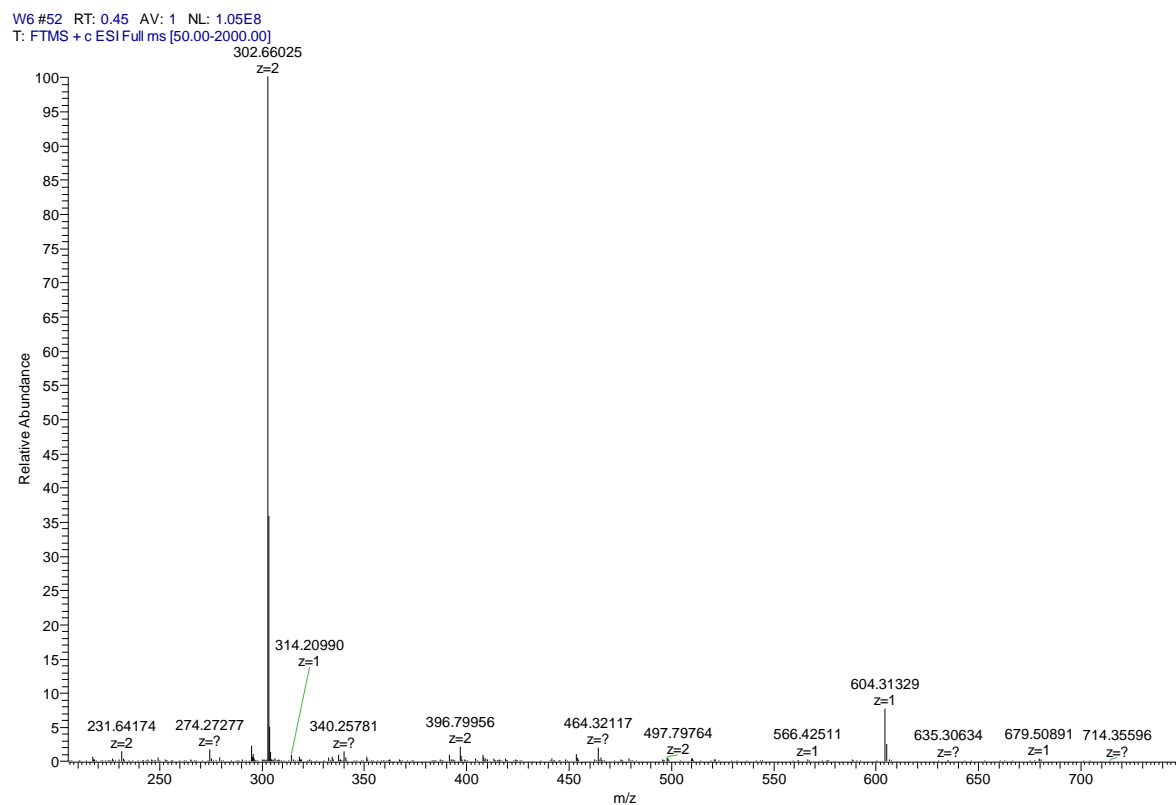


Fig.8. MS of compound 9j



2. 氨基丙醇吡啶 NDS M=603

Fig.9. MS of compound **9k**

M4 #45 RT: 0.39 AV: 1 NL: 6.75E7
T: FTMS + c ESI Full ms [50.00-1500.00]

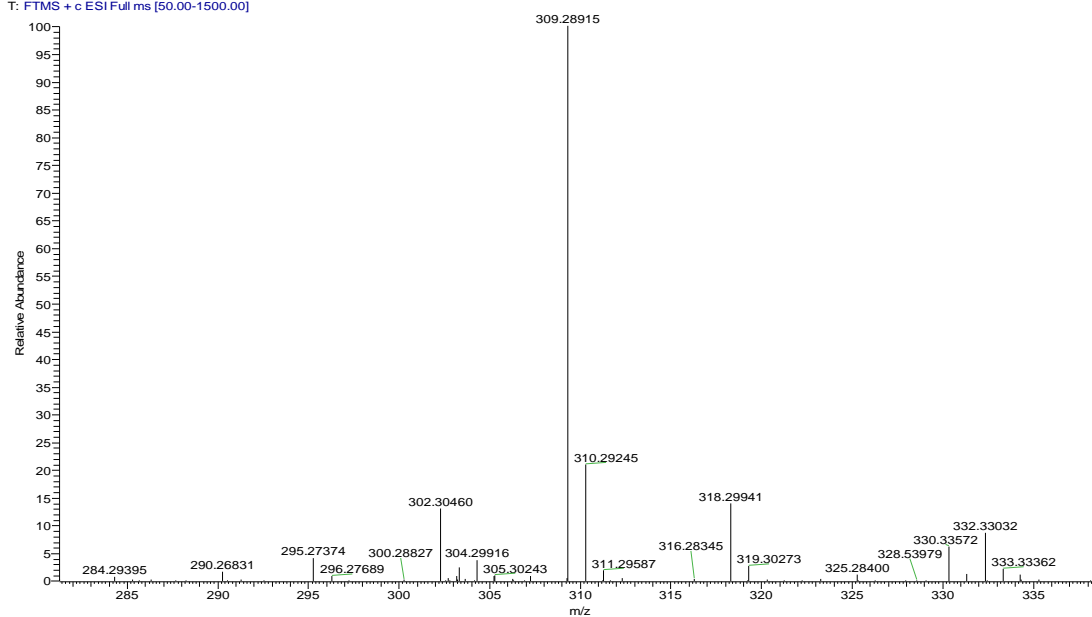


Fig.10. MS of compound 5